

Product datasheet for **RC211063**

CREB3L2 (NM_194071) Human Tagged ORF Clone

Product data:

Product Type:	Expression Plasmids
Product Name:	CREB3L2 (NM_194071) Human Tagged ORF Clone
Tag:	Myc-DDK
Symbol:	CREB3L2
Synonyms:	BBF2H7
Mammalian Cell Selection:	Neomycin
Vector:	pCMV6-Entry (PS100001)
E. coli Selection:	Kanamycin (25 ug/mL)



[View online »](#)

ORF Nucleotide Sequence:

>RC211063 ORF sequence
 Red=Cloning site Blue=ORF Green=Tags(s)

TTTTGTAATACGACTCACTATAGGGCGGCCGGAATTCGTCGACTGGATCCGGTACCGAGGAGATCTGCC
 GCC**GCGATCGCC**

ATGGAGGTGCTGGAGAGCGGGAGCAGGGCGTGTGCAGTGGACCGCAAGCTGAGCGAGCTGTGAGAGC
 CCGGGGACGGCGAGGCCCTCATGTACCACAGCACTTCTCAGAATTCTGGATGAGTTTTCCAGAACGT
 CTTGGGTGAGCTCCTGAATGATCCTTCTCTCAGAGAAGAGTGTGCAATGGAGGTGGAACCTTCCCCG
 ACGTCCCCGGCGCCTCTCATCCAGGCTGAGCACAGCTACTCCCTGTGCGAGGAGCCTCGGGCCAGTCGC
 CCTTACCACATTACCAGTGACAGCTTCAATGACGATGAGGTGGAAAGTGAAGAAATGGTACCTGTCTAC
 AGACTTCCCTTCAACATCCATCAAGACAGAGCCAATTACAGACGAACACCCCCAGGACTCGTCCCGTCT
 GTCACTTGACCATCACAGCCATCTCCACCCCGTTGGAAAAGGAGGAACCTCCTCTGAAATGAACACTG
 GGGTTGATCCTCGTGCCAGACCATTATCCTAAAATTAAGCTGGAGCCTCATGAAGTGGATCAGTTTCT
 AAATTCTCTCTAAAGAAGCCCAAGTGGACCACCTGCATTTGCCGCCACCCCTCCGAGCAGTCACGGC
 AGTGACTCAGAGGGCAGCCTGAGTCCCAACCCAGCCTGCACCCCTTACGCTGCCTCAGACCCACAGCC
 CCTCCAGAGCTGCACCCCGGGCCCTCCGCCCTCTCCAGCTCCCTCTCCTCACGGCTCCTCATAACT
 GCAGGGATCAGGCCCTCTGGTCTGACAGAGGAGGAGAAGAGGACCCTGATCGCTGAGGGCTATCCCATC
 CCCACCAAATGCCCCTGTCAAATCAGAGGAGAAGGCCCTGAAGAAAATTCGGAGGAAGATCAAGAATA
 AGATTTCTGCTCAGGAAAGTAGGAGAAAGAAAGAAATACATGGACAGCCTGGAGAAAAAGTGGAGTC
 TTGTTCAACTGAGAACTTGGAGCTTCGGAAGAAGTAGAGTTCTAGAGAACACTAATAGGACTCTCCT
 CAGCAACTCCAGAAGCTCAGACTTTGGTATGGCAAGTTTCTCGAACCTGCAAGTTAGCTGGCACGC
 AGACTGGCACCTGCCTCATGGTTGGTGTGCTGTGCTTTGCCGTTGCATTCGGCAGCTTCTTTCAAGGTA
 CGGGCCCTATCCTTCTGCCACCAAGATGGCTCTGCCAGCCAGCATTCCCTGCAGGAGCCCTACACAGCC
 TCCGTGGTGAGATCCAGAACTGCTGATCTACGAGGAACATTCTCCCCAGAGGAGTCATCCAGCCCGG
 GCTCGGCTGGGGAGCTGGGGGGCTGGGATAGAGGTTCTCCCTGCTCAGGGTGTGAGGGTGGAGTCCAG
 GCCGGATGTGGATCTTCCCATTTCATTATCTCGAATGAGACCAGCCTGGAGAAGTCAGTGCTTTTGGAG
 CTGCAGCAGCACCTGGTCAGCGCAAACGGAGGGGAATGAAACACTAAAAGTTGTAGAACTCGACAGAA
 GAGTGAACACCCTTTC

ACGCGTACGCGGCCGCTCGAGCAGAACTCATCTCAGAAGAGGATCTGGCAGCAAATGATATCTGGATT
 ACAAGGATGACGACGATAAGGTTTAA

Protein Sequence:

>RC211063 protein sequence
 Red=Cloning site Green=Tags(s)

MEVLESGEQGLVQWRKLSLSEPGDGEALMYHTHFSELLDEFQNVLGQLLNDPFLSEKSVSMEVEPSP
 TSPAPLIQAEHSYSLCEEPRAQSPFTHITSDSFNDDEVESEKWYLDLDFPSTSIKTEPITDEPPPGLVPS
 VTLTITAIISTPLEKEEPPLEMNVTGVDSSCQTIIPKIKLEPHEVDQFLNFSPEAPVDHLHLPPTPPSSHG
 SDSEGLSPNRLHPFSLPQTHSPSRAAPRAPSALSSPPLLTAHKLQSGPLVLTTEEKRTLIAEGYPI
 PTKLPLSKSEEKALKIRRKIKNKISAQESRRKKKEYMDSLEKKVESCSTENLELRKKVEVLENTNRTLL
 QQLQKLQTLVMGKVSRTCKLAGTQTGTCLMVVLCFAVAFGSFFQGYGPYPYATKMALPSQHSLEPYTA
 SVVRSRNLIIYEEHSPPEESSSPGSAGELGGWDRGSSLLRVSGLESRPDVLPHFIISNETSLEKSVLLE
 LQHLVSAKLEGNLTKVVELDRRVNTTF

TRTRPLEQKLISEEDLAANDILDYKDDDDKV

Chromatograms:

https://cdn.origene.com/chromatograms/mk6377_e01.zip

Restriction Sites:

Sgfl-MluI

Cloning Scheme:


ACCN: NM_194071

ORF Size: 1557 bp

OTI Disclaimer: The molecular sequence of this clone aligns with the gene accession number as a point of reference only. However, individual transcript sequences of the same gene can differ through naturally occurring variations (e.g. polymorphisms), each with its own valid existence. This clone is substantially in agreement with the reference, but a complete review of all prevailing variants is recommended prior to use. [More info](#)

OTI Annotation: This clone was engineered to express the complete ORF with an expression tag. Expression varies depending on the nature of the gene.

Components: The ORF clone is ion-exchange column purified and shipped in a 2D barcoded Matrix tube containing 10ug of transfection-ready, dried plasmid DNA (reconstitute with 100 ul of water).

Reconstitution Method:

1. Centrifuge at 5,000xg for 5min.
2. Carefully open the tube and add 100ul of sterile water to dissolve the DNA.
3. Close the tube and incubate for 10 minutes at room temperature.
4. Briefly vortex the tube and then do a quick spin (less than 5000xg) to concentrate the liquid at the bottom.
5. Store the suspended plasmid at -20°C. The DNA is stable for at least one year from date of shipping when stored at -20°C.

RefSeq: [NM_194071.1](#)

RefSeq Size: 7471 bp

RefSeq ORF: 1563 bp

Locus ID: 64764

UniProt ID: [Q70SY1](#)

Cytogenetics: 7q33

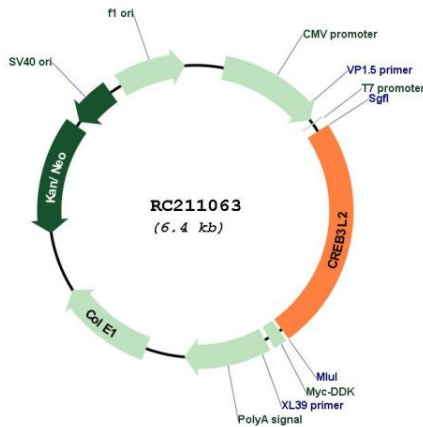
Protein Families: Transcription Factors

Protein Pathways: Huntington's disease, Melanogenesis, Prostate cancer

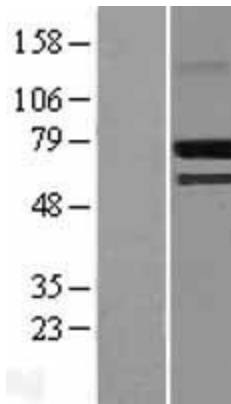
MW: 57.3 kDa

Gene Summary: This gene encodes a member of the oasis bZIP transcription factor family. Members of this family can dimerize but form homodimers only. The encoded protein is a transcriptional activator. Translocations between this gene on chromosome 7 and the gene fused in sarcoma on chromosome 16 can be found in some tumors. Multiple transcript variants encoding different isoforms have been found for this gene. [provided by RefSeq, Dec 2011]

Product images:



Circular map for RC211063



Western blot validation of overexpression lysate (Cat# [LY405179]) using anti-DDK antibody (Cat# [TA50011-100]). Left: Cell lysates from untransfected HEK293T cells; Right: Cell lysates from HEK293T cells transfected with RC211063 using transfection reagent MegaTran 2.0 (Cat# [TT210002]).