

Product datasheet for **RC211061**

TMCO2 (NM_001008740) Human Tagged ORF Clone

Product data:

Product Type: Expression Plasmids
Product Name: TMCO2 (NM_001008740) Human Tagged ORF Clone
Tag: Myc-DDK
Symbol: TMCO2
Synonyms: dj39G22.2
Mammalian Cell Selection: Neomycin
Vector: pCMV6-Entry (PS100001)
E. coli Selection: Kanamycin (25 ug/mL)
ORF Nucleotide Sequence: >RC211061 ORF sequence
 Red=Cloning site Blue=ORF Green=Tags(s)

TTTTGTAATACGACTCACTATAGGGCGGCCGGAATTCGTCGACTGGATCCGGTACCGAGGAGATCTGCC
 GCC**CGATCGCC**

ATGTCAACATCTTCATCTTCTAGCTGGGACAACCTCTTAGAGTCTCTCTCTCAGCACAGTATGGAATT
 GGATACAAGCAAGTTTTTTGGGAGAGACTAGTGCACCTCAGCAAACAAGTTGGGACTATTAGATAATCT
 TGCTCCAGCTGTGCAATCATCTTGAGGATTTCTTTCTTGATTTATTGGGAATAGGAATATATGCCTTA
 TGGAAACGAAGTATTCAGTCAATTCAGAAAACATTGTTGTTTGAATCACACTCTACAACTTTACAAGA
 AGGGCTCACATATTTTTGAGGCTTGTAGCCAACCCAGAAGGAAGTGGTCTCCGAATTCAGACAATAA
 TAATCTTTTCTGCTCCTTGGGTCTGCAAGAGAAAATTTGAAAAACTTAAGACAGTGGAAAACAAATG
 AAGAACCTAGAAGGGATAATCGTTGCTCAAAAACCTGCCACGAAGAGGGATTGCTCCTCTGAGCCCTACT
 GCAGCTGCTCTGACTGCCAGAGTCCCTTGTCACATCAGGGTTTACTTCCCCCATT

ACGCGTACGCGGCCGCTCGAGCAGAACTCATCTCAGAAGAGGATCTGGCAGCAAATGATATCCTGGATT
 ACAAGGATGACGACGATAAGGTTTAA

Protein Sequence: >RC211061 protein sequence
 Red=Cloning site Green=Tags(s)

MSTSSSSWDNLLLESLSLSTVWNWIQASFLGETSAPQQTSLGLLDNLAPAVQIILRISFLILLGIGIYAL
 WKRSIQSIQKTLFVITLYKLYKKGSHIFEALLANPEGSLRIQDNNLFLSLGLQEKILKLTVENKM
 KNLEGIIVAQKPKRDCSSEPYCSCSDCQSPLSTSGFTSPI

TRTRPLEQKLISEEDLAANDILDYKDDDDKV

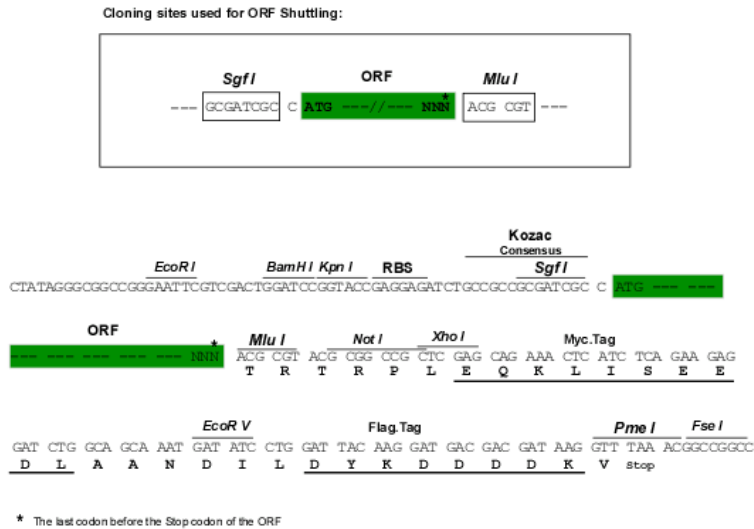
Chromatograms: https://cdn.origene.com/chromatograms/mk6378_a02.zip



[View online »](#)

Restriction Sites: SgfI-MluI

Cloning Scheme:



ACCN: NM_001008740

ORF Size: 546 bp

OTI Disclaimer: The molecular sequence of this clone aligns with the gene accession number as a point of reference only. However, individual transcript sequences of the same gene can differ through naturally occurring variations (e.g. polymorphisms), each with its own valid existence. This clone is substantially in agreement with the reference, but a complete review of all prevailing variants is recommended prior to use. [More info](#)

OTI Annotation: This clone was engineered to express the complete ORF with an expression tag. Expression varies depending on the nature of the gene.

Components: The ORF clone is ion-exchange column purified and shipped in a 2D barcoded Matrix tube containing 10ug of transfection-ready, dried plasmid DNA (reconstitute with 100 ul of water).

Reconstitution Method:

1. Centrifuge at 5,000xg for 5min.
2. Carefully open the tube and add 100ul of sterile water to dissolve the DNA.
3. Close the tube and incubate for 10 minutes at room temperature.
4. Briefly vortex the tube and then do a quick spin (less than 5000xg) to concentrate the liquid at the bottom.
5. Store the suspended plasmid at -20°C. The DNA is stable for at least one year from date of shipping when stored at -20°C.

RefSeq: [NM_001008740.4](#)

RefSeq Size: 741 bp

RefSeq ORF: 549 bp

Locus ID: 127391

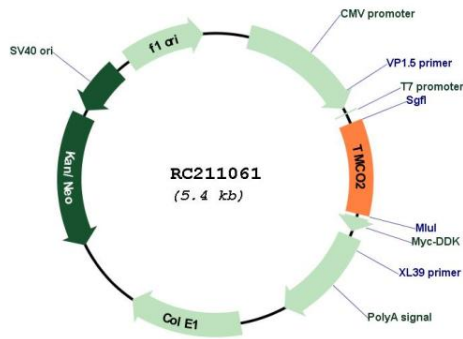
UniProt ID: [Q7Z6W1](#)

Cytogenetics: 1p34.2

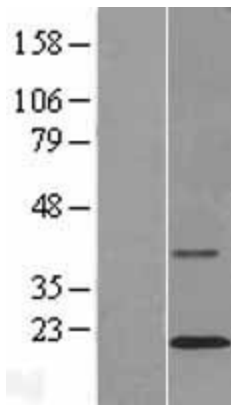
Protein Families: Transmembrane

MW: 20.1 kDa

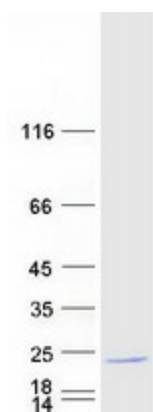
Product images:



Circular map for RC211061



Western blot validation of overexpression lysate (Cat# [LY423368]) using anti-DDK antibody (Cat# [TA50011-100]). Left: Cell lysates from untransfected HEK293T cells; Right: Cell lysates from HEK293T cells transfected with RC211061 using transfection reagent MegaTran 2.0 (Cat# [TT210002]).



Coomassie blue staining of purified TMCO2 protein (Cat# [TP311061]). The protein was produced from HEK293T cells transfected with TMCO2 cDNA clone (Cat# RC211061) using MegaTran 2.0 (Cat# [TT210002]).