

## Product datasheet for RC211060

### C10ORF132 (GOLGA7B) (NM\_001010917) Human Tagged ORF Clone

#### Product data:

|                           |   |
|---------------------------|---|
| Product Type:             | Expression Plasmids   |
| Product Name:             | C10ORF132 (GOLGA7B) (NM_001010917) Human Tagged ORF Clone         |
| Tag:                      | Myc-DDK   |
| Symbol:                   | C10ORF132   |
| Synonyms:                 | bA451M19.3; bA459F3.4; C10orf132; C10orf133                       |
| Mammalian Cell Selection: | Neomycin  |
| Vector:                   | pCMV6-Entry (PS100001)  |
| E. coli Selection:        | Kanamycin (25 ug/mL)  |
| ORF Nucleotide Sequence:  | >RC211060 ORF sequence<br>Red=Cloning site Blue=ORF Green=Tags(s) |

TTTTGTAATACGACTCACTATAGGGCGGCCGGAATTCGTCGACTGGATCCGGTACCGAGGAGATCTGCC  
GCC**CGATCGCC**

ATGGCCACCGAGGTCCACAATCTGCAGGAGCTCCGGCGAAGTGCCTCACTGGCCACCAAGGTCCTTTATCC  
AGAGAGACTACAGCGATGGGACCATCTGTCAAGTCCAGACCAAATCCCCCAGAGCTGGACAGCCGGAT  
CGAGCGGCAGCTCTTTGAAGAGACTGTGAAGACCTCAACGGATTTACGCAGAGGCTGAGAAGATTGGG  
GGCAGCTCTACCTCGAGGGCTGCCTGGCTGCCCATGGCTACTTCATCTTCTCTGCATGGAGACCC  
ACTATGAGAAGGTTCTCAAGAAGATTTCCGCTACATCCAGGAGCAGAATGAGAAGATCTTGCACCTCG  
AGGCTCTACTTACAGACCTGTGGAGCGTGGGATGAGGGTTATTGAGATCTCCATCTACGAGGACCGG  
TGCAGCAGTGGCAGCTCCAGCAGCGGCAGCAGCAGCGGCAGTGGCAGCAGCAGCGGTGGGGTGGTGGGG  
CGGGGGCCCGG

**ACGCGT**ACGCGGCCGCTCGAGCAGAACTCATCTCAGAAGAGGATCTGGCAGCAAATGATATCCTGGATT  
ACAAGGATGACGACGATAAGGTTTAA

|                   |  |
|-------------------|--|
| Protein Sequence: | >RC211060 protein sequence<br>Red=Cloning site Green=Tags(s) |
|-------------------|--|

MATEVHNLQELRRSASLTKVFIQRDYS DGTICQFQTKFPPELDSRIERQLFEETVKTLNGFYAEAEKIG  
GSSYLEGLACAMAYFIFLCMETHYEKVLKISRYIQEQNEKIFAPRLLLLTDPVERGMRVIEISIYEDR  
CSSGSSSSGSSSGSSSGGGGAGAR

**TR**TRPLEQKLISEEDLAANDILDYKDDDDKV

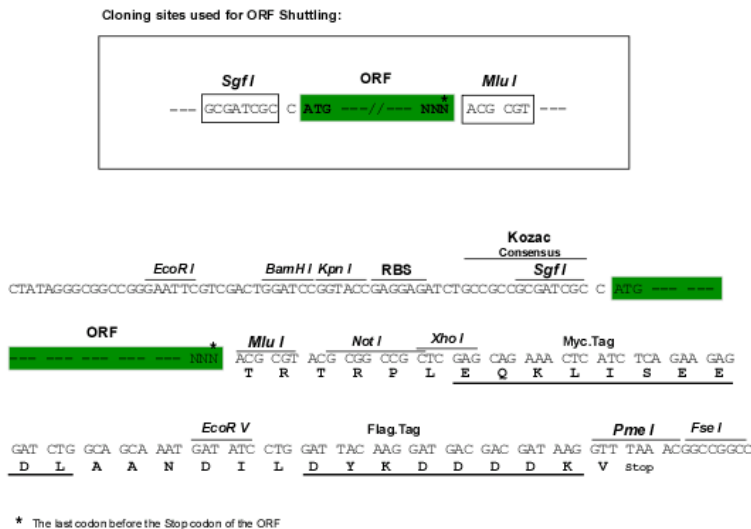
|                |   |
|----------------|---|
| Chromatograms: | <a href="https://cdn.origene.com/chromatograms/mk6378_d05.zip">https://cdn.origene.com/chromatograms/mk6378_d05.zip</a> |
|----------------|---|



[View online »](#)

Restriction Sites: SgfI-MluI

Cloning Scheme:



ACCN: NM\_001010917

ORF Size: 501 bp

OTI Disclaimer: The molecular sequence of this clone aligns with the gene accession number as a point of reference only. However, individual transcript sequences of the same gene can differ through naturally occurring variations (e.g. polymorphisms), each with its own valid existence. This clone is substantially in agreement with the reference, but a complete review of all prevailing variants is recommended prior to use. [More info](#)

OTI Annotation: This clone was engineered to express the complete ORF with an expression tag. Expression varies depending on the nature of the gene.

Components: The ORF clone is ion-exchange column purified and shipped in a 2D barcoded Matrix tube containing 10ug of transfection-ready, dried plasmid DNA (reconstitute with 100 ul of water).

Reconstitution Method:

1. Centrifuge at 5,000xg for 5min.
2. Carefully open the tube and add 100ul of sterile water to dissolve the DNA.
3. Close the tube and incubate for 10 minutes at room temperature.
4. Briefly vortex the tube and then do a quick spin (less than 5000xg) to concentrate the liquid at the bottom.
5. Store the suspended plasmid at -20°C. The DNA is stable for at least one year from date of shipping when stored at -20°C.

RefSeq: [NM\\_001010917.3](#)

RefSeq Size: 6465 bp

RefSeq ORF: 504 bp

Locus ID: 401647

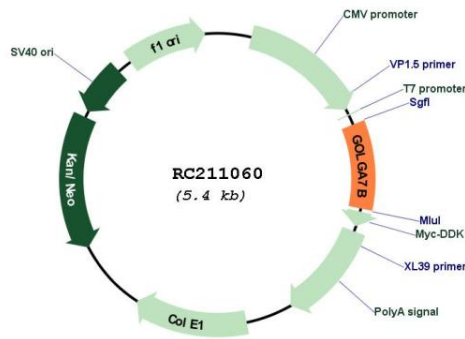
UniProt ID: [Q2TAP0](#)

Cytogenetics: 10q24.2

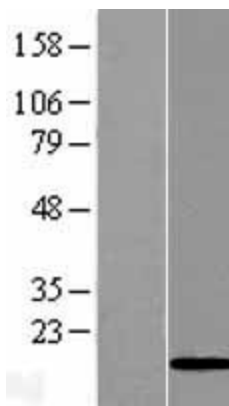
MW: 18.4 kDa

Gene Summary: May be involved in protein transport from Golgi to cell surface.[UniProtKB/Swiss-Prot Function]

**Product images:**



Circular map for RC211060



Western blot validation of overexpression lysate (Cat# [LY423228]) using anti-DDK antibody (Cat# [TA50011-100]). Left: Cell lysates from untransfected HEK293T cells; Right: Cell lysates from HEK293T cells transfected with RC211060 using transfection reagent MegaTran 2.0 (Cat# [TT210002]).