

Product datasheet for **RC211054**

C1orf31 (COA6) (NM_001012985) Human Tagged ORF Clone

Product data:

Product Type: Expression Plasmids
Product Name: C1orf31 (COA6) (NM_001012985) Human Tagged ORF Clone
Tag: Myc-DDK
Symbol: C1orf31
Synonyms: C1orf31; CEMCOX4; MC4DN13
Mammalian Cell Selection: Neomycin
Vector: pCMV6-Entry (PS100001)
E. coli Selection: Kanamycin (25 ug/mL)
ORF Nucleotide Sequence: >RC211054 ORF sequence
Red=Cloning site Blue=ORF Green=Tags(s)

TTTTGTAATACGACTCACTATAGGGCGGCCGGAATTCGTCGACTGGATCCGGTACCGAGGAGATCTGCC
GCC**CGGATCGCC**

ATGGGCCCCGGGAGGTCCCTTACTGTCCCCGAGCCGCGGGTTCCTCTTGTGCAAAACGGGGTGGCACTCCA
ATCGCCTGCTTGGTGATTGTGGCCCCACACACCTGTTTCTACAGCGCTTAGCTTCATCGCAGTAGGAAT
GGCAGCCCCATCTATGAAGGAAAGACAGGTCTGCTGGGGGCCCGGGATGAGTACTGGAAGTGTAGAT
GAGAACTTAGAGGATGCTTCTCAATGCAAGAAGTTAAGAAGCTCTTCGAATCAAGTTGCCCAACAGT
GGATAAAATATTTGATAAAAGAAGAGACTACTTAAAATTCAAAGAAAAATTTGAAGCAGGACAATTTGA
GCCTTCAGAAACAACCTGCAAAATCC

ACGCGTACGCGGCCGCTCGAGCAGAAACTCATCTCAGAAGAGGATCTGGCAGCAAATGATATCCTGGATT
ACAAGGATGACGACGATAAGGTTTAA

Protein Sequence: >RC211054 protein sequence
Red=Cloning site Green=Tags(s)
MPPGGPLLSPSRGFLLCKTGWHSNRLLGDCPHTPVSTALSFIIVGMAAPSMKERQVCWGARDEYWKCLD
ENLEDASQCKKLRSSESSCPQQWIKYFDKRRDYLKFKKFEAGQFEPSETTAKS

TRTRPLEQKLISEEDLAANDILDYKDDDDKV

Chromatograms: https://cdn.origene.com/chromatograms/mk6544_b06.zip

Restriction Sites: SgfI-MluI



[View online »](#)

Cloning Scheme:


ACCN: NM_001012985

ORF Size: 375 bp

OTI Disclaimer: The molecular sequence of this clone aligns with the gene accession number as a point of reference only. However, individual transcript sequences of the same gene can differ through naturally occurring variations (e.g. polymorphisms), each with its own valid existence. This clone is substantially in agreement with the reference, but a complete review of all prevailing variants is recommended prior to use. [More info](#)

OTI Annotation: This clone was engineered to express the complete ORF with an expression tag. Expression varies depending on the nature of the gene.

Components: The ORF clone is ion-exchange column purified and shipped in a 2D barcoded Matrix tube containing 10ug of transfection-ready, dried plasmid DNA (reconstitute with 100 ul of water).

- Reconstitution Method:**
1. Centrifuge at 5,000xg for 5min.
 2. Carefully open the tube and add 100ul of sterile water to dissolve the DNA.
 3. Close the tube and incubate for 10 minutes at room temperature.
 4. Briefly vortex the tube and then do a quick spin (less than 5000xg) to concentrate the liquid at the bottom.
 5. Store the suspended plasmid at -20°C. The DNA is stable for at least one year from date of shipping when stored at -20°C.

RefSeq: [NM_001012985.2](#), [NP_001013003.1](#)

RefSeq Size: 657 bp

RefSeq ORF: 378 bp

Locus ID: 388753

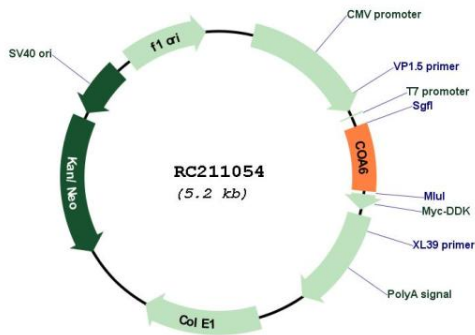
UniProt ID: [Q5JTJ3](#)

Cytogenetics: 1q42.2

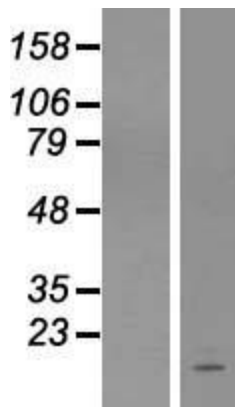
MW: 14.1 kDa

Gene Summary: This gene encodes a member of the cytochrome c oxidase subunit 6B family. The encoded protein associates with cytochrome c oxidase may act has an cytochrome c oxidase mitochondrial respiratory complex VI assembly factor. Mutations in this gene may be associated with fatal infantile cardiomyopathy. Alternate splicing results in multiple transcript variants. [provided by RefSeq, Sep 2014]

Product images:



Circular map for RC211054



Western blot validation of overexpression lysate (Cat# [LY422946]) using anti-DDK antibody (Cat# [TA50011-100]). Left: Cell lysates from untransfected HEK293T cells; Right: Cell lysates from HEK293T cells transfected with RC211054 using transfection reagent MegaTran 2.0 (Cat# [TT210002]).