

Product datasheet for RC211047

CTRP3 (C1QTNF3) (NM_030945) Human Tagged ORF Clone

Product data:

Product Type:	Expression Plasmids
Product Name:	CTRP3 (C1QTNF3) (NM_030945) Human Tagged ORF Clone
Tag:	Myc-DDK
Symbol:	CTRP3
Synonyms:	C1ATNF3; CORCS; CORS; CORS-26; CORS26; CTRP3
Mammalian Cell Selection:	Neomycin
Vector:	pCMV6-Entry (PS100001)
E. coli Selection:	Kanamycin (25 ug/mL)
ORF Nucleotide Sequence:	>RC211047 ORF sequence Red=Cloning site Blue=ORF Green=Tags(s)

TTTTGTAATACGACTCACTATAGGGCGCCGGGAATTCGTCGACTGGATCCGGTACCGAGGAGATCTGCC
GCC**CGATCGCC**

ATGCTTTGGAGGCAGCTCATCTATTGGCAACTGCTGGCTTTGTTTTCTCCCTTTTGCCTGTGTCAAG
ATGAATACATGGAGTCTCCACAAACCGGAGGACTACCCCGACTGCAGTAAGTGTTCATGGAGACTA
CAGCTTCGAGGCTACCAAGGCCCCCTGGGCCACCGGCCCTCTGGCATTCCAGGAAACCATGGAAAC
AATGGCAACAATGGAGCCACTGGTCATGAAGGAGCCAAAGGTGAGAAGGGCGACAAGGTGACCTGGGGC
CTCGAGGGGAGCGGGGCAGCATGGCCCAAAGGAGAGAAGGGCTACCCGGGGATTCCACCAGAACTTCA
GATTGCATTCATGGCTTCTCTGGCAACCCACTTCAGCAATCAGAACAGTGGGATTATCTTCAGCAGTGT
GAGACCAACATTGGAAACTTCTTTGATGTCATGACTGGTAGATTTGGGGCCCCAGTATCAGTGTGTATT
TCTTACCTTCAGCATGATGAAGCATGAGGATGTTGAGGAAGTGTATGTGTACCTTATGCACAATGGCAA
CACAGTCTTCAGCATGTACAGCTATGAAATGAAGGGCAAATCAGATACATCCAGCAATCATGCTGTGCTG
AAGCTAGCCAAAGGGGATGAGGTTTGGCTGCGAATGGGCAATGGCGCTCTCCATGGGGACCACCAACGCT
TCTCCACCTTTGCAGGATTCTGCTCTTTGAACTAAG

ACGCGTACGCGGCCGCTCGAGCAGAACTCATCTCAGAAGAGGATCTGGCAGCAAATGATATCCTGGATT
ACAAGGATGACGACGATAAGGTTTAA



[View online »](#)

Protein Sequence: >RC211047 protein sequence
Red=Cloning site Green=Tags(s)

MLWRQLIYWQLLALFFLPFLCQDEYMESPQTGGLPPDCSKCCHGDYSFRGYQGGPPGPPGIPGNHGN
 NGNNGATGHEGAKGEKGDKGDGLGPRGERGQHGPKEKGYPPPELQIAFASLATHFSNQNSGIIFSSV
 ETNIGNFFDVMTGRFGAPVSGVYFFTFSSMKHEDVEEVYVYLMHNGNTVFSMYSYEMKKGKSDTSSNHAVL
 KLAKGDEVWLRMGNGALHGDHQRFFSTFAGFLLFETK

TRTRPLEQKLISEEDLAANDILDYKDDDDKV

Chromatograms: https://cdn.origene.com/chromatograms/mk6544_d08.zip

Restriction Sites: SgfI-MluI

Cloning Scheme:

Cloning sites used for ORF Shuttling:



* The last codon before the Stop codon of the ORF

ACCN: NM_030945

ORF Size: 738 bp

OTI Disclaimer: The molecular sequence of this clone aligns with the gene accession number as a point of reference only. However, individual transcript sequences of the same gene can differ through naturally occurring variations (e.g. polymorphisms), each with its own valid existence. This clone is substantially in agreement with the reference, but a complete review of all prevailing variants is recommended prior to use. [More info](#)

OTI Annotation: This clone was engineered to express the complete ORF with an expression tag. Expression varies depending on the nature of the gene.

Components: The ORF clone is ion-exchange column purified and shipped in a 2D barcoded Matrix tube containing 10ug of transfection-ready, dried plasmid DNA (reconstitute with 100 ul of water).

Reconstitution Method:

1. Centrifuge at 5,000xg for 5min.
2. Carefully open the tube and add 100ul of sterile water to dissolve the DNA.
3. Close the tube and incubate for 10 minutes at room temperature.
4. Briefly vortex the tube and then do a quick spin (less than 5000xg) to concentrate the liquid at the bottom.
5. Store the suspended plasmid at -20°C. The DNA is stable for at least one year from date of shipping when stored at -20°C.

RefSeq: [NM_030945.4](#)

RefSeq Size: 3624 bp

RefSeq ORF: 741 bp

Locus ID: 114899

UniProt ID: [Q9BXJ4](#)

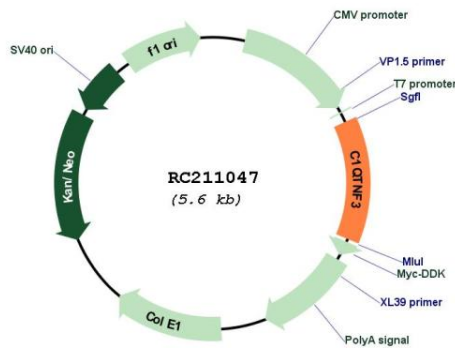
Cytogenetics: 5p13.2

Domains: C1Q, Collagen

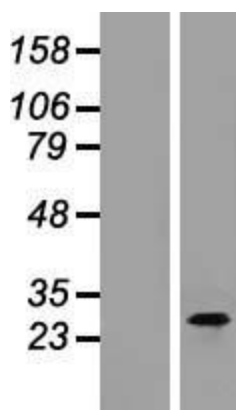
Protein Families: Secreted Protein

MW: 27 kDa

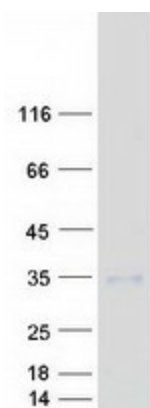
Product images:



Circular map for RC211047



Western blot validation of overexpression lysate (Cat# [LY410641]) using anti-DDK antibody (Cat# [TA50011-100]). Left: Cell lysates from untransfected HEK293T cells; Right: Cell lysates from HEK293T cells transfected with RC211047 using transfection reagent MegaTran 2.0 (Cat# [TT210002]).



Coomassie blue staining of purified C1QTNF3 protein (Cat# [TP311047]). The protein was produced from HEK293T cells transfected with C1QTNF3 cDNA clone (Cat# RC211047) using MegaTran 2.0 (Cat# [TT210002]).