

Product datasheet for RC211040

PGRPS (PGLYRP1) (NM_005091) Human Tagged ORF Clone

Product data:

Product Type: Expression Plasmids
Product Name: PGRPS (PGLYRP1) (NM_005091) Human Tagged ORF Clone
Tag: Myc-DDK
Symbol: PGRPS
Synonyms: PGLYRP; PGRP; PGRP-S; PGRPS; TAG7; TNFSF3L
Mammalian Cell Selection: Neomycin
Vector: pCMV6-Entry (PS100001)
E. coli Selection: Kanamycin (25 ug/mL)
ORF Nucleotide Sequence: >RC211040 ORF sequence
 Red=Cloning site Blue=ORF Green=Tags(s)

TTTTGTAATACGACTCACTATAGGGCGCCGGAATTCGTCGACTGGATCCGGTACCGAGGAGATCTGCC
 GCC**CGATCGCC**

ATGTCGCCCGCTCTATGCTGCTTGGCTGGGCTCTCCCCAGCCTCCTTCGACTCGGAGCGGCTCAGGAGA
 CAGAAGACCCGGCCTGCTGCAGCCCCATAGTCCCCGGAACGAGTGGAAGGCCCTGGCATCAGAGTGCGC
 CCAGCACCTGAGCCTGCCCTTACGCTATGTGGTGGTATCGCACACGGCGGCAGCAGCTGCAACACCCCC
 GCCTCGTGCCAGCAGCAGGCCCGAATGTGCAGCACTACCACATGAAGACTGGGCTGGTGCACGTGG
 GCTACAACCTTCTGATTGGAGAAGACGGGCTCGTATACGAGGGCCGTGGCTGGAACCTCACGGGTGCCA
 CTAGGTCACCTTATGGAACCCCATGTCCATTGGCATCAGCTTCATGGGCAACTACATGGATCGGGTGCC
 ACACCCAGGCCATCCGGGCAGCCAGGGTCTACTGGCCTGCGGTGTGGCTCAGGAGCCCTGAGGTCCA
 ACTATGTGCTCAAAGGACACCGGATGTGCAGCGTACACTCTCTCCAGGCAACCAGCTCTACCACCTCAT
 CCAGAATTGGCCACACTACCGCTCCCC

ACGCGTACGCGGCCGCTCGAGCAGAACTCATCTCAGAAGAGGATCTGGCAGCAATGATATCCTGGATT
 ACAAGGATGACGACGATAAGGTTTAA

Protein Sequence: >RC211040 protein sequence
 Red=Cloning site Green=Tags(s)

MSRRSMLLAWALPSLLRLGAAQETEDPACCSPVPRNEWKALASECAQHLPLRYVVVSHTAGSSCNTP
 ASCQQQARNVQHYHMKTLGWCDVGYNFLIGEDGLVYEGRWFTGAHSGHLWNPMSIGISFMGNMMDRVP
 TPQAIRAAQGLLACGVAQALRSNYVLKGHQVQRTLSPGNQLYHLIQNWPBYRSP

TRTRPLEQKLISEEDLAANDILDYKDDDDKV



[View online »](#)

Chromatograms: https://cdn.origene.com/chromatograms/mk6234_b06.zip

Restriction Sites: SgfI-MluI

Cloning Scheme:



ACCN: NM_005091

ORF Size: 588 bp

OTI Disclaimer: The molecular sequence of this clone aligns with the gene accession number as a point of reference only. However, individual transcript sequences of the same gene can differ through naturally occurring variations (e.g. polymorphisms), each with its own valid existence. This clone is substantially in agreement with the reference, but a complete review of all prevailing variants is recommended prior to use. [More info](#)

OTI Annotation: This clone was engineered to express the complete ORF with an expression tag. Expression varies depending on the nature of the gene.

Components: The ORF clone is ion-exchange column purified and shipped in a 2D barcoded Matrix tube containing 10ug of transfection-ready, dried plasmid DNA (reconstitute with 100 ul of water).

Reconstitution Method:

1. Centrifuge at 5,000xg for 5min.
2. Carefully open the tube and add 100ul of sterile water to dissolve the DNA.
3. Close the tube and incubate for 10 minutes at room temperature.
4. Briefly vortex the tube and then do a quick spin (less than 5000xg) to concentrate the liquid at the bottom.
5. Store the suspended plasmid at -20°C. The DNA is stable for at least one year from date of shipping when stored at -20°C.

RefSeq: [NM_005091.3](#)

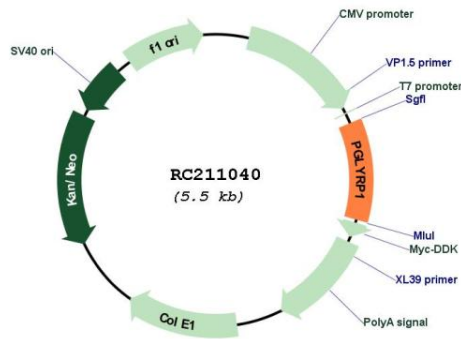
RefSeq Size: 972 bp

RefSeq ORF: 591 bp

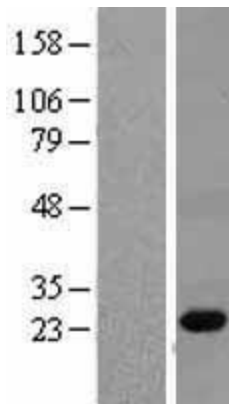
Locus ID: 8993

UniProt ID: [O75594](#)
Cytogenetics: 19q13.32
Domains: Ami_2, PGRP
Protein Families: Druggable Genome, Secreted Protein
MW: 21.7 kDa
Gene Summary: Pattern receptor that binds to murein peptidoglycans (PGN) of Gram-positive bacteria. Has bactericidal activity towards Gram-positive bacteria. May kill Gram-positive bacteria by interfering with peptidoglycan biosynthesis. Binds also to Gram-negative bacteria, and has bacteriostatic activity towards Gram-negative bacteria. Plays a role in innate immunity. [UniProtKB/Swiss-Prot Function]

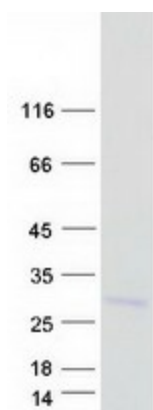
Product images:



Circular map for RC211040



Western blot validation of overexpression lysate (Cat# [LY417530]) using anti-DDK antibody (Cat# [TA50011-100]). Left: Cell lysates from untransfected HEK293T cells; Right: Cell lysates from HEK293T cells transfected with RC211040 using transfection reagent MegaTran 2.0 (Cat# [TT210002]).



Coomassie blue staining of purified PGLYRP1 protein (Cat# [TP311040]). The protein was produced from HEK293T cells transfected with PGLYRP1 cDNA clone (Cat# RC211040) using MegaTran 2.0 (Cat# [TT210002]).