

Product datasheet for **RC211037**

IL36 beta (IL36B) (NM_173178) Human Tagged ORF Clone

Product data:

Product Type: Expression Plasmids
Product Name: IL36 beta (IL36B) (NM_173178) Human Tagged ORF Clone
Tag: Myc-DDK
Symbol: IL36 beta
Synonyms: FIL1; FIL1-(ETA); FIL1H; FILI-(ETA); IL-1F8; IL-1H2; IL1-ETA; IL1F8; IL1H2
Mammalian Cell Selection: Neomycin
Vector: pCMV6-Entry (PS100001)
E. coli Selection: Kanamycin (25 ug/mL)
ORF Nucleotide Sequence: >RC211037 ORF sequence
Red=Cloning site Blue=ORF Green=Tags(s)

TTTTGTAATACGACTCACTATAGGGCGGCCGGAATTCGTCGACTGGATCCGGTACCGAGGAGATCTGCC
GCC**CGATCGCC**

ATGAACCCACAACGGGAGGCAGCACCCAAATCCTATGCTATTCGTGATTCTCGACAGATGGTGTGGGTCC
TGAGTGGAAATCTTTAATAGCAGCTCCTTAGCCGAGCATTAAAGCCTGCTACTCTTCATTTAATAGC
CTGTAGAGACACAGAATTCAGTGACAAGGAAAAGGTAATATGGTTTACCTGGGAATCAAGGAAAAGAT
CTCTGTCTCTTGTGCAGAAATTCAGGGCAAGCCTACTTTCAGCTTAAGGAAAAAATATCATGGACC
TGTATGTGGAGAAGAAAGCACAGAAGCCCTTTCTTTTTCCACAATAAAGAAGGCTCCACTTCTGTCTT
TCAGTCAGTCTCTTACCCTGGCTGGTTCATAGCCACCTCCACCACATCAGGACAGCCCATCTTTCTACC
AAGGAGAGAGGCATAACTAATAACTAACTTCTACTTAGATTCTGTGGAA

ACGCGTACGCGGCCGCTCGAGCAGAACTCATCTCAGAAGAGGATCTGGCAGCAAATGATATCCTGGATT
ACAAGGATGACGACGATAAGGTTTAA

Protein Sequence: >RC211037 protein sequence
Red=Cloning site Green=Tags(s)

MNPQREAAPKSYAIRDSRQMWWVLSGNSLIAAPLSRSIKPVTLHLIACRDTEFSDKEKGNMYYLGIKGD
LCLFCAEIQGKPTLQLKEKNIMDLVVEKKAQKPFLLFFHNKEGSTSVFQSVSPGWF IATSTTSGQP IFLT
KERGITNNTNFYLD SVE

TRTRPLEQKLI SEEDLAANDILDYKDDDDKV

Chromatograms: https://cdn.origene.com/chromatograms/mk6372_h09.zip



[View online »](#)

Restriction Sites: SgfI-MluI

Cloning Scheme:



ACCN: NM_173178

ORF Size: 471 bp

OTI Disclaimer: The molecular sequence of this clone aligns with the gene accession number as a point of reference only. However, individual transcript sequences of the same gene can differ through naturally occurring variations (e.g. polymorphisms), each with its own valid existence. This clone is substantially in agreement with the reference, but a complete review of all prevailing variants is recommended prior to use. [More info](#)

OTI Annotation: This clone was engineered to express the complete ORF with an expression tag. Expression varies depending on the nature of the gene.

Components: The ORF clone is ion-exchange column purified and shipped in a 2D barcoded Matrix tube containing 10ug of transfection-ready, dried plasmid DNA (reconstitute with 100 ul of water).

Reconstitution Method:

1. Centrifuge at 5,000xg for 5min.
2. Carefully open the tube and add 100ul of sterile water to dissolve the DNA.
3. Close the tube and incubate for 10 minutes at room temperature.
4. Briefly vortex the tube and then do a quick spin (less than 5000xg) to concentrate the liquid at the bottom.
5. Store the suspended plasmid at -20°C. The DNA is stable for at least one year from date of shipping when stored at -20°C.

RefSeq: [NM_173178.3](#)

RefSeq Size: 1068 bp

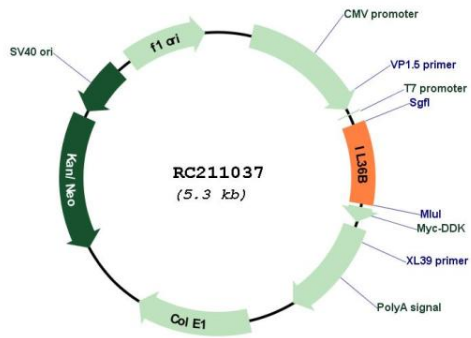
RefSeq ORF: 474 bp

Locus ID: 27177

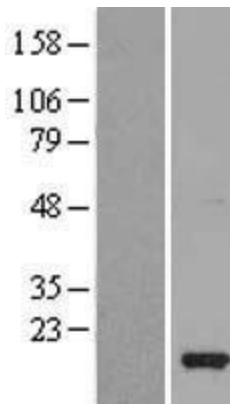
UniProt ID: [Q9NZH7](#)
Cytogenetics: 2q14.1
Protein Families: Druggable Genome, Secreted Protein
MW: 17.7 kDa

Gene Summary: The protein encoded by this gene is a member of the interleukin 1 cytokine family. Protein structure modeling indicated that this cytokine may contain a 12-stranded beta-trefoil structure that is conserved between IL1A (IL-A alpha) and IL1B (IL-1 beta). This gene and eight other interleukin 1 family genes form a cytokine gene cluster on chromosome 2. Two alternatively spliced transcript variants encoding distinct isoforms have been reported. [provided by RefSeq, Jul 2008]

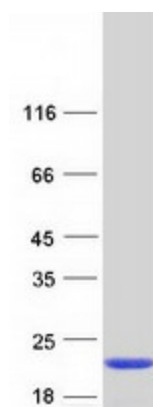
Product images:



Circular map for RC211037



Western blot validation of overexpression lysate (Cat# [LY406635]) using anti-DDK antibody (Cat# [TA50011-100]). Left: Cell lysates from untransfected HEK293T cells; Right: Cell lysates from HEK293T cells transfected with RC211037 using transfection reagent MegaTran 2.0 (Cat# [TT210002]).



Coomassie blue staining of purified IL36B protein (Cat# [TP311037]). The protein was produced from HEK293T cells transfected with IL36B cDNA clone (Cat# RC211037) using MegaTran 2.0 (Cat# [TT210002]).