

Product datasheet for **RC211033L3V**

BEST4 (NM_153274) Human Tagged ORF Clone Lentiviral Particle

Product data:

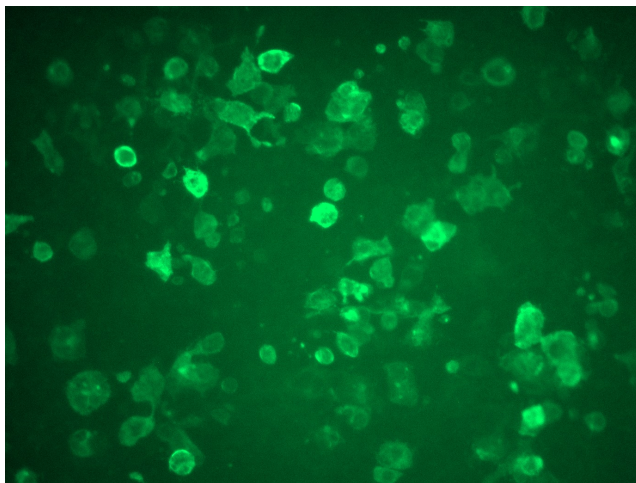
Product Type:	Lentiviral Particles
Product Name:	BEST4 (NM_153274) Human Tagged ORF Clone Lentiviral Particle
Symbol:	BEST4
Synonyms:	VMD2L2
Mammalian Cell Selection:	Puromycin
Vector:	pLenti-C-Myc-DDK-P2A-Puro (PS100092)
Tag:	Myc-DDK
ACCN:	NM_153274
ORF Size:	1419 bp
ORF Nucleotide Sequence:	The ORF insert of this clone is exactly the same as(RC211033).
OTI Disclaimer:	The molecular sequence of this clone aligns with the gene accession number as a point of reference only. However, individual transcript sequences of the same gene can differ through naturally occurring variations (e.g. polymorphisms), each with its own valid existence. This clone is substantially in agreement with the reference, but a complete review of all prevailing variants is recommended prior to use. More info
OTI Annotation:	This clone was engineered to express the complete ORF with an expression tag. Expression varies depending on the nature of the gene.
RefSeq:	NM_153274.2
RefSeq Size:	2096 bp
RefSeq ORF:	1422 bp
Locus ID:	266675
UniProt ID:	Q8NFU0
Cytogenetics:	1p34.1
Protein Families:	Ion Channels: Other, Transmembrane
MW:	53.5 kDa



[View online »](#)

Gene Summary:

This gene is a member of the bestrophin gene family of anion channels. Bestrophin genes share a similar gene structure with highly conserved exon-intron boundaries, but with distinct 3' ends. Bestrophins are transmembrane proteins that contain a homologous region rich in aromatic residues, including an invariant arg-phe-pro motif. Mutation in one of the family members (bestrophin 1) is associated with vitelliform macular dystrophy. The bestrophin 4 gene is predominantly expressed in the colon. [provided by RefSeq, Jul 2008]

Product images:

[RC211033L3] was used to prepare Lentiviral particles using [TR30037] packaging kit. HEK293T cells were transduced with RC211033L3V particle to overexpress human BEST4-Myc-DDK fusion protein.