

Product datasheet for RC211031

C12orf28 (MYRFL) (NM_182530) Human Tagged ORF Clone

Product data:

Product Type:	Expression Plasmids
Product Name:	C12orf28 (MYRFL) (NM_182530) Human Tagged ORF Clone
Tag:	Myc-DDK
Symbol:	C12orf28
Synonyms:	bcm1377; C12orf15; C12orf28
Mammalian Cell Selection:	Neomycin
Vector:	pCMV6-Entry (PS100001)
E. coli Selection:	Kanamycin (25 ug/mL)
ORF Nucleotide Sequence:	>RC211031 representing NM_182530 Red=Cloning site Blue=ORF Green=Tags(s)

TTTTGTAATACGACTCACTATAGGGCGGCCGGAATTCGTCGACTGGATCCGGTACCGAGGAGATCTGCC
GCC**CGATCGCC**

ATGGCATTTTGTGCTTTGACGATAGTTGCCCTCTATATACTTAGCTTAAAAGATCAAGACCGACGTGTCC
CAAATCTCCCTCCAAGCAATATCACAAGCTCACAGGAGCCGGCTCTGCTGCCACAGCCTCCTCCTCAGC
ACCTAATACATCCCTGGTAACCACACCGGCCTCCTTACAAGTACCTGAAATTACTTTCTGTGAAATCCTG
CCGTGTCAGGAGACTTATTGCTGCCCATCCGGGAATGAAAGAAGTCTTTCAAGTCTGTGCAAAGAC
AATCTGAGGAGAAGGAATCCATCAGAGCGGATGGTCAGAAGACAAAAGCAAATCAGTTTTGGCAAGAAA
TGCACTCAGCGGCCCTGACTGGGAGAGTACTGGATTGATACAACCATCAGTTCTATTAGATTATGGAA
ATCCAGCAAATAATAGATCATCAGTATTGCATTCAAAGCCTCCAGTGCAGGATCTGGAAATTATAATTACA
ATATTCCTGTTAATAACACACACCCACCAATGTCAAGTTCTCTCTGGAAATAAACACAACAGAGCCATT
GATAGTCTTCCAGTGCAAATTCACCTTGGAAATATATGTTTCCATAGTAAAAGGGGAACCAAAGGGATG
GAAAGCCACAGAGAAATCTCCAGGAGATGACACAGGGATATCAGCACATTTGGAGCCTCCCTGTAGCCC
CATTTTCTGACAGCATGTTCCATTTCCGTGTAGCTGCACCGGATTTAGCTGACTGTTCAACTGATCCTTA
TTTTGTGGGATATTCTCACCGATTACTTCTTTACTTCTATCGACGCTGTGCC

ACGCGTACGCGGCCGCTCGAGCAGAAACTCATCTCAGAAGAGGATCTGGCAGCAAATGATATCCTGGATT
ACAAGGATGACGACGATAAGGTTTAA



[View online »](#)

Reconstitution Method:

1. Centrifuge at 5,000xg for 5min.
2. Carefully open the tube and add 100ul of sterile water to dissolve the DNA.
3. Close the tube and incubate for 10 minutes at room temperature.
4. Briefly vortex the tube and then do a quick spin (less than 5000xg) to concentrate the liquid at the bottom.
5. Store the suspended plasmid at -20°C. The DNA is stable for at least one year from date of shipping when stored at -20°C.

RefSeq: [NM_182530.1](#), [NP_872336.1](#)

RefSeq Size: 1240 bp

RefSeq ORF: 2733 bp

Locus ID: 196446

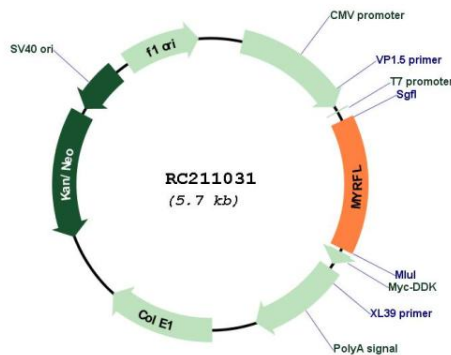
UniProt ID: [Q96LU7](#)

Cytogenetics: 12q15

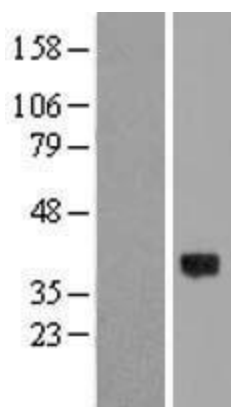
Protein Families: Secreted Protein

MW: 31.7 kDa

Product images:



Circular map for RC211031



Western blot validation of overexpression lysate (Cat# [LY405507]) using anti-DDK antibody (Cat# [TA50011-100]). Left: Cell lysates from untransfected HEK293T cells; Right: Cell lysates from HEK293T cells transfected with RC211031 using transfection reagent MegaTran 2.0 (Cat# [TT210002]).