

Product datasheet for **RC211025**

KIRREL 3 (KIRREL3) (NM_032531) Human Tagged ORF Clone

Product data:

Product Type:	Expression Plasmids
Product Name:	KIRREL 3 (KIRREL3) (NM_032531) Human Tagged ORF Clone
Tag:	Myc-DDK
Symbol:	KIRREL 3
Synonyms:	KIRRE; MRD4; NEPH2; PRO4502
Mammalian Cell Selection:	Neomycin
Vector:	pCMV6-Entry (PS100001)
E. coli Selection:	Kanamycin (25 ug/mL)



[View online »](#)

Protein Sequence: >RC211025 protein sequence
Red=Cloning site Green=Tags(s)

MKPFQLDLLFVCFLLFSQELGLQKRGCCCLVLGYMAKDKFRMNQGVVYFSQPPQDQVVVSGQPVTLLCA
IPEYDGFVLWIKDGLALGVGRDLSSYPQYL VVGNHLSGEHHLKILRAELQDDAVYECQAIQAAIRSRPAR
LTVLVPPDDPVILGGPVISLRAGDPLNLTCHADNAKPAASIIWLRKGEVINGATYSKTLRLDGGKRESIVS
TLFISPGDVENGQSIVCRATNKAIIPGGKETSVTIDIQHPPLVNLVSEPPVLEDNVVTFHCSAKANPAVT
QYRWAKRGQIIKEASGEVYRTTVDYTYFSEPVSCVTNALGSTNLSRTVDVYFGPRMTTEPQSLLVDLGS
DAIFSCAWTGNPSLTIWVMKRGSGVVL SNEKTLTLKSVRQEDAGKYVCRAVPRVGGAGEREVTLTVNGPP
IISSTQTQHALHGEKGQIKCFIRSTPPPDRIAWSKENVLESGTSGRYTVETISTEEGVISTLTISNIVR
ADFQTIYNCTAWNSFGSDTEIIRLKEQGSEMKGAGLEAESVPMAVIIGVAVGAGVAFVLMATIVAFCC
ARSQRNLKGVVSAKNDIRVEIVHKEPASGREGEHSTIKQLMMDRGEFQQDSVLKQLEVLKEEKEFQNL
KDPTNGYYSVNTFKEHSTPTISLSSCQPDLRPAGKQRVPTGMSFTNIYSTLSGQGRLYDYGQRFVLMGM
SSSIELCEREFQRGSLSDSSFLDTQCDSVSSSGKQDGYVQFDKASKASASSSHHSQSSSQNSDPSRPL
QRRMQTHV

TRTRPLEQKLI SEEDLAANDILDYKDDDDKV

Chromatograms: https://cdn.origene.com/chromatograms/mk6372_b04.zip

Restriction Sites: Sgfl-Mlul

Reconstitution Method:

1. Centrifuge at 5,000xg for 5min.
2. Carefully open the tube and add 100ul of sterile water to dissolve the DNA.
3. Close the tube and incubate for 10 minutes at room temperature.
4. Briefly vortex the tube and then do a quick spin (less than 5000xg) to concentrate the liquid at the bottom.
5. Store the suspended plasmid at -20°C. The DNA is stable for at least one year from date of shipping when stored at -20°C.

RefSeq: [NM_032531.4](#)

RefSeq Size: 3794 bp

RefSeq ORF: 2337 bp

Locus ID: 84623

UniProt ID: [Q8IZU9](#)

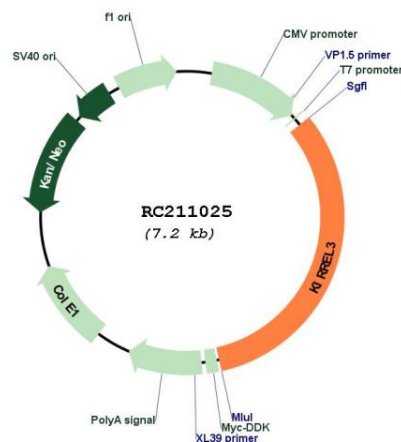
Cytogenetics: 11q24.2

Protein Families: Transmembrane

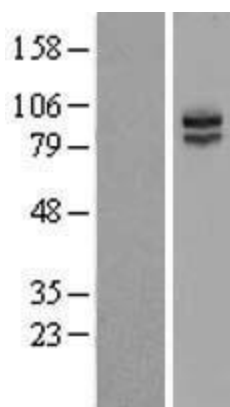
MW: 85.3 kDa

Gene Summary: The protein encoded by this gene is a member of the nephrin-like protein family. These proteins are expressed in fetal and adult brain, and also in podocytes of kidney glomeruli. The cytoplasmic domains of these proteins interact with the C-terminus of podocin, also expressed in the podocytes, cells involved in ensuring size- and charge-selective ultrafiltration. The protein encoded by this gene is a synaptic cell adhesion molecule with multiple extracellular immunoglobulin-like domains and a cytoplasmic PDZ domain-binding motif. Mutations in this gene are associated with several neurological and cognitive disorders. Alternatively spliced transcript variants encoding different isoforms have been found for this gene. [provided by RefSeq, Jul 2017]

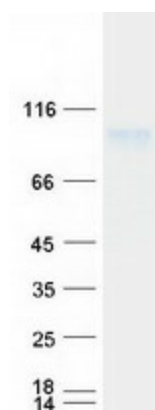
Product images:



Circular map for RC211025



Western blot validation of overexpression lysate (Cat# [LY410061]) using anti-DDK antibody (Cat# [TA50011-100]). Left: Cell lysates from untransfected HEK293T cells; Right: Cell lysates from HEK293T cells transfected with RC211025 using transfection reagent MegaTran 2.0 (Cat# [TT210002]).



Coomassie blue staining of purified KIRREL3 protein (Cat# [TP311025]). The protein was produced from HEK293T cells transfected with KIRREL3 cDNA clone (Cat# RC211025) using MegaTran 2.0 (Cat# [TT210002]).