

Product datasheet for RC211022

Sex Hormone Binding Globulin (SHBG) (NM_001040) Human Tagged ORF Clone

Product data:

Product Type:	Expression Plasmids
Product Name:	Sex Hormone Binding Globulin (SHBG) (NM_001040) Human Tagged ORF Clone
Tag:	Myc-DDK
Symbol:	Sex Hormone Binding Globulin
Synonyms:	ABP; SBP; TEBG
Mammalian Cell Selection:	Neomycin
Vector:	pCMV6-Entry (PS100001)
E. coli Selection:	Kanamycin (25 ug/mL)
ORF Nucleotide Sequence:	>RC211022 representing NM_001040 Red=Cloning site Blue=ORF Green=Tags(s)

TTTTGTAATACGACTCACTATAGGGCGGCCGGAATTCGTCGACTGGATCCGGTACCGAGGAGATCTGCC
GCC**CGATCGCC**

ATGGAGAGCAGAGGCCACTGGCTACCTCGCGCCTGCTGCTGTTGCTGCTGTTGCTACTACTGCGTCACA
CCCAGGATGGGCCCTGAGACCTGTTCTCCCCACCCAGAGTGCCACGACCCCGGCTGTCCACCT
CAGCAATGGCCAGGACAAGAGCCTATCGCTGTCATGACCTTTGACCTACCAAGATCACAAAACCTCC
TCCTCCTTTGAGTTTGAACCTGGGACCCAGGGAGTGATTTTTATGGGGATACCAACCTAAGGATG
ACTGGTTTATGCTGGGACTTCGAGACGGCAGGCTGAGATCCAATGCACAATCACTGGGCCAGCTTAC
GGTGGGTGCTGGACCACGGCTGGATGATGGGAGATGGCACCAGGTGGAAGTCAAGATGGAGGGGACTCT
GTGCTGCTGGAGGTGGATGGGGAGGAGGTGCTGCGCCTGAGACAGGTCTCTGGGCCCTGACCAGAAAC
GCCATCCCATCATGAGGATTGCGCTTGGGGGGTCTCTTCCCCGCTTCCAACCTTCGGTTGCCGCTGGT
TCCTGCCCTGGATGGCTGCCTGCGCCGGGATTCCTGGCTGGACAAACAGGCCGAGATCTCAGCATCTGCC
CCCCTAGCCTCAGAAGCTGTGATGTAGAATCAAATCCCGGATATTTCTCCCTCCAGGGACTCAGGCAG
AATTCATCTCCGAGACATTCAGCCTCATGCAGAGCCCTGGGCTTCTCTTTGGACCTGGGACTCAA
GCAGGCAGCAGGCTCAGGCCACCTCCTTGCTCTTGGGACACCAGAGAACCATCTTGGCTCAGTCTCCAC
CTCCAAGATCAAAGGTGGTGTGTTCTTCTGGGTCGGGGCCAGGGCTGGATCTGCCCTGGTCTTGGGAC
TCCTCTTCAGCTGAAGCTGAGTATGTCCAGGGTGGTCTTGGCCAAAGGTCGAAGATGAAGGCCCTTGC
CCTGCCTCCCTTAGGCCTGGCTCCCTCCTAACCTCTGGGCCAAGCCTCAAGGGCGTCTCTTCTGGGG
GCTTTACCAGGAGAAGACTCTTCCACCTCTTTTGCCTGAATGGCCTTTGGGCACAAGGTGAGAGCTGG
ATGTGGACCAGGCCCTGAACAGAAGCCATGAGATCTGGACTCACAGCTGCCCCAGAGGCCAGGCAATGG
CACTGACGCTTCCAT

ACGCGTACGCGGCCGCTCGAGCAGAACTCATCTCAGAAGAGGATCTGGCAGCAAATGATATCTGGATT
ACAAGGATGACGACGATAAGGTTTAA



[View online >](#)

Protein Sequence: >RC211022 representing NM_001040
 Red=Cloning site Green=Tags(s)

MESRGPLATSRLLLLLLLLLLRHTRQGWALRPVLPQTSAHDPPAVHLSNGPGQEPIAVMTFDLTKITKTS
 SSFEVRTWDEGVIIFYGDTNPKDDWFMLGLRDGRPEIQLHNHWAQLTVGAGPRLDDGRWHQVEVKMEGDS
 VLLEVDGEEVLRRLRQVSGPLTSKRHPIMRIALGGLLFPASNLRLPLVPALDGCLRRDSWLDKQAEISASA
 PTLRSCDVESNPGIFLPPGTQAEFNLRDIPQPHAEPWAFSLDLGLKQAAGSGHLLALGTPENPSWLSLH
 LQDQKVVLSSGSGPGLDPLVLGLPLQLKLSMSRVVLSQGSKMKALALPPLGLAPLLNLWAKPQGRFLG
 ALPGEDSSTSFCLNGLWAQGQRLDQALNRSHEIWITHSCPSPGNGTDASH

TRTRPLEQKLISEEDLAANDILDYKDDDDKV

Chromatograms: https://cdn.origene.com/chromatograms/ja1732_e08.zip

Restriction Sites: SgfI-MluI

Cloning Scheme:



* The last codon before the Stop codon of the ORF

ACCN: NM_001040

ORF Size: 1206 bp

OTI Disclaimer: The molecular sequence of this clone aligns with the gene accession number as a point of reference only. However, individual transcript sequences of the same gene can differ through naturally occurring variations (e.g. polymorphisms), each with its own valid existence. This clone is substantially in agreement with the reference, but a complete review of all prevailing variants is recommended prior to use. [More info](#)

OTI Annotation: This clone was engineered to express the complete ORF with an expression tag. Expression varies depending on the nature of the gene.

Components: The ORF clone is ion-exchange column purified and shipped in a 2D barcoded Matrix tube containing 10ug of transfection-ready, dried plasmid DNA (reconstitute with 100 ul of water).

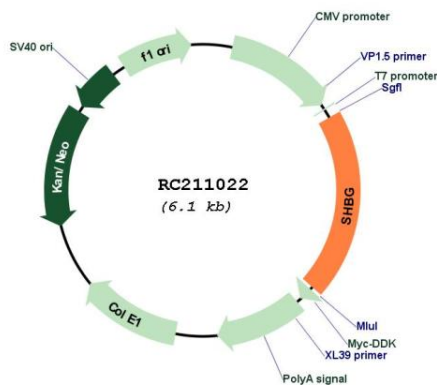
Reconstitution Method:

1. Centrifuge at 5,000xg for 5min.
2. Carefully open the tube and add 100ul of sterile water to dissolve the DNA.
3. Close the tube and incubate for 10 minutes at room temperature.
4. Briefly vortex the tube and then do a quick spin (less than 5000xg) to concentrate the liquid at the bottom.
5. Store the suspended plasmid at -20°C. The DNA is stable for at least one year from date of shipping when stored at -20°C.

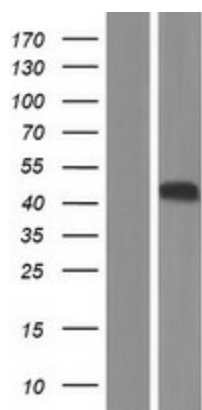
RefSeq: [NM_001040.5](#)
RefSeq Size: 1277 bp
RefSeq ORF: 1209 bp
Locus ID: 6462
UniProt ID: [P04278](#)
Cytogenetics: 17p13.1
Protein Families: Druggable Genome, Secreted Protein
MW: 43.8 kDa

Gene Summary: This gene encodes a steroid binding protein that was first described as a plasma protein secreted by the liver but is now thought to participate in the regulation of steroid responses. The encoded protein transports androgens and estrogens in the blood, binding each steroid molecule as a dimer formed from identical or nearly identical monomers. Polymorphisms in this gene have been associated with polycystic ovary syndrome and type 2 diabetes mellitus. Alternative splicing results in multiple transcript variants. [provided by RefSeq, Jan 2014]

Product images:



Circular map for RC211022



Western blot validation of overexpression lysate (Cat# [LY421869]) using anti-DDK antibody (Cat# [TA50011-100]). Left: Cell lysates from untransfected HEK293T cells; Right: Cell lysates from HEK293T cells transfected with RC211022 using transfection reagent MegaTran 2.0 (Cat# [TT210002]).