

## Product datasheet for RC211018

### SALF (STON1-GTF2A1L) (NM\_172311) Human Tagged ORF Clone

#### Product data:

Product Type:	Expression Plasmids
Product Name:	SALF (STON1-GTF2A1L) (NM_172311) Human Tagged ORF Clone
Tag:	Myc-DDK
Symbol:	SALF
Synonyms:	ALF; GTF2A1L; GTF2A1LF; SALF
Mammalian Cell Selection:	Neomycin
Vector:	pCMV6-Entry (PS100001)
E. coli Selection:	Kanamycin (25 ug/mL)
ORF Nucleotide Sequence:	>RC211018 ORF sequence Red=Cloning site Blue=ORF Green=Tags(s)

TTTTGTAATACGACTCACTATAGGGCGGCCGGAATTCGTCGACTGGATCCGGTACCGAGGAGATCTGCC  
GCC**CGATCGCC**

ATGTGCTCCACAAATCCAGGCAATGGGTACCTTTGATGATGATCCTGCTGTTCAATCTTCTCAAAGT  
CAAAGAATTTTCTCTGGAGAATCAAGGTGTCTGTAGACCAAATGGACTGAAGCTGAACCTTCTGGCCT  
CAGGGAATTTCCAGTGGATCTTCTCCACCAGCAGCACTCTCTCTCTCCCCATTGTAGATTTTAT  
TTCAGTCCAGGACCTCAAGTAACCTCTCTCTTCTACACCTACCAAAGACTTCCAGGTTTTCTGGCA  
TCCCCAAAGCAGGACTCATGTGCTTTATCCTATTCCAGAAATCATCTTCAGACAGCCCACTCGCAATATC  
AGGAGGAGAATCTTCTTACTGCCTACCAGACCAACATGTTTATCCCATGCCTTGTACCCAGTGACCAC  
TCATGTACACATCCAACCTCCCAAAGTAGGTCTTCCAGATGAAGTTAATCCTCAACAGGCTGAAAGCCTAG  
GATTCCAAAGTGATGATCTCCCCAGTTTCAGTATTTTCGAGAGGACTGTGCTTTTTCAAGTCCATTTTG  
GAAAGATGAAGGCAGTGATTCACATTTACCCCTTGACCCACCAGGAAGCAAAAAGATGTTCTCATCAAGA  
ACAAGGAGATGCCTATTGACCAAAAAAGCCTAAATAAGTGTTCCTCACTCACTATATCTGTGAGAAGCTTG  
AACATCTCCAGTCAGCTGAGAACCAAGACTCACTTAGAAGTTGTCTATGCACTGTCTATGTGCTGAAGA  
AAATGCCTCTTCTTTGTCCCCACACACTCTTCAGGAGTCAGCCAAAATCTGGATGGTCTTTTCATGCTG  
AGAATTCCTGAGAAGAAGAAATATGATGTCTTCCCGGCAATGGGGACCAATTTTTCTGAAAGTTTTGCCTG  
GAGGAATTTTGCAGATGATTATGAACAGGGATTAGAAAAACCATTTAAAGAGATACAGCTTGATCCATA  
TTGTAGGCTTTCTGAACCAAGTTGAGAACTTCAAGTGTAGCAGGAAAAATCCACACTGTGAAGATTGAA  
CATGTGCTTACACAGAAAAAGGAAATACCATTCTAAGACAGAAGTAGTTCATGAACCTGACATAGAGC  
AGATGCTGAAGTTGGGTCCACATCGTACCATGACTTCTTACTTCTGACTACTGTGGAGGAGGAGCT  
GATGAAGTTGCCAGCTGTTTCAAACCAAAAAAGAACTACGAGGAGCAAGAAATTTCTTGGAAATTTGTG  
GACAACTTTTGGGTAAAGTCACAAAAGAAGGAAAATTTGTTGAAAGTGTGTGATAACTCAAATTTATT  
GCCTCTGCTTTGTGAATGGAACTGGAATGCTTTTTAACCTTGAATGACCTTGAGTTGCCGAAGCGAGA  
TGAACTCTATTATGAGAAGGACTCAGAAAAAAGGGGATTGATATTCTTGACTACCATTTTCATAAGTGT



[View online »](#)

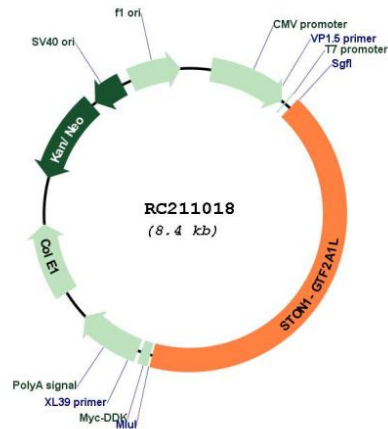
GTGAATGTACAAGAATTTGAGCAATCAAGAATCATTAAAGTTTGTACCTCTGGATGCCTGCCGTTTGGAGC  
TGATGCGTTTTCAAGACTTTGTATAATGGGGATAATCTTCCCTTTTCTTGAAGTCTGTAGTGTTGTCCA  
GGGAGCATACGTGGAACCTCAGGCTTTTGTCAACATGGCCTCATTGGCGCAGAGGTCATCCTATGCTGGT  
TCCTTAAGGTCTGTGACAATAAAGGATACACTTTCTGTCCCATCGCAGTGGATCAAGGCCCTTTGGA  
CCATGAACCTCCAGAGGCAGAAGTCTCTGAAAGCTAAAATGAACCGCCGAGCATGTCTGGGGAGTTTACA  
TGAACCTGAATCTGAACCTGTCAATCAAGTCACTGTGGGTGAGCAAAAATAGAGAGTGCCTACCAGGCA  
GTGGTATGGAAGATAGATCGGCTTCCAGACAAAATCAAGTCTAGATCATCCCCATTGCTGTCAATACA  
AATTAGAGCTTGGATCAGACCAAGAAATCCCTCTGATTGGTATCCATTTGCTACTGTTCAAGTTTTCCGT  
GCCTGACACCTGTGCCTCAAGGACAGAGGTGAGTCTCTGGGAGTGGAGAGTGATGTCCAGCCACAGAAA  
CATGTTACAGCAGCGAGCTTGCTACAACATCCAGCCTAACTCTACAGATCTGTAATTGAAGATGTAATTG  
AAGGAGTTCGGAATCTATTTGCTGAAGAAGGTATAGAGGAACAAGTTTTAAAAGACTTGAAGCAGCTCTG  
GGAAACCAAGTTTTGCAGTCTAAAGCAACAGAAGACTTCTTCAAAAATAGCATCCAATCACCTCTGTTT  
ACTCTTCAGTTGCCGCACAGCTTGACCAAAACATTGCAATCGTCAACAGCATCATTAGTTATTCCTGCTG  
GTAGAACTCTTCCAAGTTTTACCACAGCAGAAGTGGGCACCTCAAACCTCAGTGCAAAACCTTACTTTTCC  
TGTTATCCCATTCATGTACCAGCAGGTGTGACACTACAGACTGTATCTGGTCACTTTTATAAAGTCAAT  
GTACCAATTATGGTGACAGAGACTTCTGGAAGAGCAGGATTCTTCAGCATCCAATTCAGCAAGTATTTTC  
AACAGCTTGCCAGCCTTCAGTAATACAACTAGTGTCCACAATTGAATCCATGGTCTCTTCAAGCAAC  
TACTGAAAAATCACAGAGAATTGAAACCGTGTACAGCAACCCGCAATTCACCTTCTGGGCCAGTAGAT  
AGGAAACACTTAGAAAATGCCACCAGTGATATACTTGTATCTCCTGGAAATGAGCATAAAAATCGTGCCTG  
AAGCTTTGTTGTGTCATCAGGAAAGTTCCTACTATACAGTCTTCCAGGTGTTGATTTTCTCCACAGGT  
CTCTCAACAAATTTAATGTGGAGTCACTGCTCAGTGGTTCAGCTAGCATGGCTCAAAATCTGCATGAT  
GAGTCCCTCTCCACAAGCCCTCATGGGGCTCACCAGCACGTGACTGATATTCAGCTTCATATTCTTA  
AAAATAGGATGTATGGATGTATTCTGTAAGCAACCAAGAAATATAGAGGAACCCAGCAACATACCTGT  
ATCAGAGAAGGATTCTAATTCTCAGGTGATTTAAGCATTTCGGGTTACTGATGATGATATTGGTGAATA  
ATTCAGTAGATGGAAGCGGTGATACATCTTCCAATGAAGAAATAGGAAGTACAAGAGATGCAGATGAGA  
ATGAATTTCTAGGGAATATTGACGGGGAGATCTGAAGGTACCTGAAGAAGAAGCTGACAGTATTTCAAA  
TGAGGATTCAGCCACAAACAGTAGTGAATGAAGACCCTCAAGTAAACATTGTAGAAGAGGACCCTTTA  
AATTCTGGAGATGATGTTAGTGAACAGGATGTCCAGACCTGTTTGACACGGATAATGTAATTGTCTGTC  
AGTATGATAAGATTCATCGAAGCAAGAACAATGGAAATTCATTTGAAAGATGGTGTATGTGTTTTGG  
AGGGAGAGACTATGATTTGCAAAAGCCATTGGTGTGACAGAGTGG

ACGCGTACGCGGCCGCTCGAGCAGAACTCATCTCAGAAGAGGATCTGGCAGCAAATGATATCCTGGATT  
ACAAGGATGACGACGATAAGGTTTAA

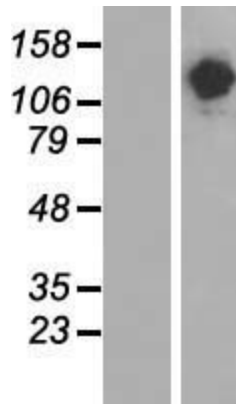


<b>OTI Disclaimer:</b>	The molecular sequence of this clone aligns with the gene accession number as a point of reference only. However, individual transcript sequences of the same gene can differ through naturally occurring variations (e.g. polymorphisms), each with its own valid existence. This clone is substantially in agreement with the reference, but a complete review of all prevailing variants is recommended prior to use. <a href="#">More info</a>
<b>OTI Annotation:</b>	This clone was engineered to express the complete ORF with an expression tag. Expression varies depending on the nature of the gene.
<b>Components:</b>	The ORF clone is ion-exchange column purified and shipped in a 2D barcoded Matrix tube containing 10ug of transfection-ready, dried plasmid DNA (reconstitute with 100 ul of water).
<b>Reconstitution Method:</b>	<ol style="list-style-type: none"><li>1. Centrifuge at 5,000xg for 5min.</li><li>2. Carefully open the tube and add 100ul of sterile water to dissolve the DNA.</li><li>3. Close the tube and incubate for 10 minutes at room temperature.</li><li>4. Briefly vortex the tube and then do a quick spin (less than 5000xg) to concentrate the liquid at the bottom.</li><li>5. Store the suspended plasmid at -20°C. The DNA is stable for at least one year from date of shipping when stored at -20°C.</li></ol>
<b>RefSeq:</b>	<a href="#">NM_172311.3</a>
<b>RefSeq Size:</b>	3830 bp
<b>RefSeq ORF:</b>	3549 bp
<b>Locus ID:</b>	286749
<b>Cytogenetics:</b>	2p16.3
<b>Protein Families:</b>	Transcription Factors
<b>MW:</b>	132.1 kDa
<b>Gene Summary:</b>	STON1-GTF2A1L mRNAs are infrequent but naturally occurring read-through products of the neighboring STON1 and GTF2A1L genes. These transcripts encode fusion proteins composed of the vast majority of each of the individual elements, stonin 1 and general transcription factor IIA, 1-like. Alternative splicing results in multiple transcript variants. The significance of these read-through variants and the function of the resulting protein products have not yet been determined. [provided by RefSeq, Oct 2010]

Product images:



Circular map for RC211018



Western blot validation of overexpression lysate (Cat# [LY406706]) using anti-DDK antibody (Cat# [TA50011-100]). Left: Cell lysates from untransfected HEK293T cells; Right: Cell lysates from HEK293T cells transfected with RC211018 using transfection reagent MegaTran 2.0 (Cat# [TT210002]).