

Product datasheet for **RC211015**

LG12 (NM_018176) Human Tagged ORF Clone

Product data:

Product Type:	Expression Plasmids
Product Name:	LG12 (NM_018176) Human Tagged ORF Clone
Tag:	Myc-DDK
Symbol:	LG12
Synonyms:	LGIL2
Mammalian Cell Selection:	Neomycin
Vector:	pCMV6-Entry (PS100001)
E. coli Selection:	Kanamycin (25 ug/mL)



[View online »](#)

ORF Nucleotide Sequence:

>RC211015 ORF sequence
 Red=Cloning site Blue=ORF Green=Tags(s)

TTTTGTAATACGACTCACTATAGGGCGGCCGGAATTCGTCGACTGGATCCGGTACCGAGGAGATCTGCC
 GCC**CGCATCGCC**

ATGGCGCTGCGGAGAGGCGGCTGCGGAGCGCTCGGGCTGCTGCTGCTGCTGCTGGCGCCGCGTGCCTGA
 TACCGCGAGCGCGCAGGTGAGGCGGCTGGCGCGCTGCCCGCCACTTGCAGCTGTACCAAGGAGTCTAT
 CATCTGCGTGGGCTCTTCTGGGTGCCAGGATCGTGCCGGGCGACATCAGCTCCCTGAGCCTGGTAAAT
 GGGACGTTTTAGAAATCAAGGACCGAATGTTTTCCCATCTGCTTCTCTGCAGCTGCTATTGCTGAATT
 CTAACCTATTACGATCATCCGGGATGATGCTTTTCTGGACTTTTTATCTTGAATACCTGTTCAATTGA
 AGGGAACAAAATAGAAACATTTCAAGAAATGCCTTTCGTGGCCTCCGTGACCTGACTCACCTTTCTTTG
 GCCAATAACCACATAAAAGCACTACCAAGGGATGTCTTCAGTGATTTAGACTCTCTGATTGAACTAGATT
 TGAGGGGTAATAAATTTGAATGTGACTGCAAAGCCAAGTGGCTATACCTGTGGTTGAAGATGACAAATTC
 CACCGTTTCTGATGTGCTGTGATTGGTCCACCAGAGTATCAGGAAAAGAAGCTAAATGACGTGACCAGC
 TTTGACTATGAATGCACAACACAGATTTTGTGTTTCATCAGACTTTACCTACCAAGTCCGGTTTCAGTGG
 ATACGTTCAACTCCAAGAACGATGTGTACGTGGCCATCGCGCAGCCAGCATGGAGAAGTGCATGGTGTCT
 GGAGTGGGACCACATTGAAATGAATTTCCGGAGCTATGACAACATTACAGGTGAGTCCATCGTGGGCTGT
 AAGGCCATTCTCATCGATGATCAGGTCTTTGTGGTGGTAGCCAGCTCTTCGGTGGCTCTCACATTTACA
 AATACGACGAGAGTTGGACCAAAATTTGTCAAATCCAAGACATAGAGGTCTCTCGCATTTCCAAGCCAA
 TGACATCGAGCTTTTTCAGATCGACGACGAGACGTTCTTTGTTCATCGCAGACAGCTCAAAGGCTGGTCTG
 TCCACAGTTTATAATGGAACAGCAAAGGATTCTATTCTTACCAGTCACTGCACGAGTGGTTCAGGGACA
 CGGATGCGGAGTTTGTGATATCGATGGAATAATCGCATCTCATCTGTCAGCCGCTCCCAAGTCCCAT
 CATCTCCAGTGGAAATAAAGCTCTAAGAAGTTTGTCCCCATGGTGACATCCCCAACATGGAGGACGTA
 CTGGCTGTGAAGAGTTCGGAATGCAAAATACCCTCTACCTTTCCCTTACCCGCTTCATCGGGGACTCCC
 GGGTCATGAGGTGGAACAGTAAGCAGTTTGTGGAGATCCAAGCTTTCCATCCCAGGGGGCCATGACCCCT
 GCAGCCCTTTTCTTTAAAGATAATCACTACCTGGCCCTGGGAGTGACTATACATTCTCTCAGATATAC
 CAGTGGGATAAAGAGAAGCAGCTATTCAAAAAGTTTAAAGGAGTTTATGTGCAGGCGCCTCGTTCATTCA
 CAGCTGTCTCCACCGACAGGAGAGATTTCTTTTTGCATCCAGTTTCAAAGGGAAAACAAAGATTTTGA
 ACATATAATTGTTGACTTAAGTTTG

ACGCGTACGCGGCCGCTCGAGCAGAAACTCATCTCAGAAGAGGATCTGGCAGCAAATGATATCCTGGATT
 ACAAGGATGACGACGATAAGGTTTAA

Protein Sequence:

>RC211015 protein sequence
 Red=Cloning site Green=Tags(s)

MALRRGGCGALGLLLLLLGAACLIPRSAQVRRRLARCPATCSCTKESIICVGSWVPRIVPGDISSLSLVN
 GTFSEIKDRMFSLPSLQLLLLLNSNSFTIIRDDAFAGLFHLEYLFIENKIIETISRNAFRGLRDLTHLSL
 ANNHKALPRDVFSDLIELDLRGNKFECDCKAKWLYLWLMNTSTVSDVLCIGPPEYQEKKLNVDVTS
 FDYECTTDFVHQTLPYQSVSDTFNSKNDVYVAIAQPSMENCMLVLEWDHIEMNFRSYDNITGQSIIVGC
 KAILIDDQVFFVVAQLFGGSHIYKYDESWTKFVKFQDIEVSRISKPNDELFIQIDDETFVIADSSKAGL
 STVYKWNKGFYSYQSLHEWFRDTEAFVDIDGKSHLILSSRSQVPIILQWNKSSKFFVPHGDIPNMDV
 LAVKSRMQNTLYLSLTRFIGDSRVMRWNSKQFVEIQALPSRGAMTLQPFQFDNHYLALGSDYTFQIY
 QWDKEKQLFKKFKEIYVQAPRSFTAVSTDRRDFFFASSFKGKTKIFEHIIVDLSL

TRTRPLEQKLISEEDLAANDILDYKDDDDKV

Chromatograms:

https://cdn.origene.com/chromatograms/mk6009_f01.zip

Restriction Sites:

Sgfl-Mlul

Cloning Scheme:

Cloning sites used for ORF Shutting:



* The last codon before the Stop codon of the ORF

ACCN: NM_018176

ORF Size: 1635 bp

OTI Disclaimer: The molecular sequence of this clone aligns with the gene accession number as a point of reference only. However, individual transcript sequences of the same gene can differ through naturally occurring variations (e.g. polymorphisms), each with its own valid existence. This clone is substantially in agreement with the reference, but a complete review of all prevailing variants is recommended prior to use. [More info](#)

OTI Annotation: This clone was engineered to express the complete ORF with an expression tag. Expression varies depending on the nature of the gene.

Components: The ORF clone is ion-exchange column purified and shipped in a 2D barcoded Matrix tube containing 10ug of transfection-ready, dried plasmid DNA (reconstitute with 100 ul of water).

Reconstitution Method:

1. Centrifuge at 5,000xg for 5min.
2. Carefully open the tube and add 100ul of sterile water to dissolve the DNA.
3. Close the tube and incubate for 10 minutes at room temperature.
4. Briefly vortex the tube and then do a quick spin (less than 5000xg) to concentrate the liquid at the bottom.
5. Store the suspended plasmid at -20°C. The DNA is stable for at least one year from date of shipping when stored at -20°C.

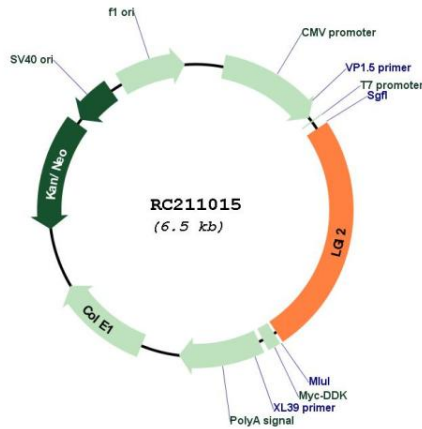
RefSeq: [NM_018176.2](#), [NP_060646.2](#)
RefSeq Size: 6339 bp

RefSeq ORF: 1638 bp

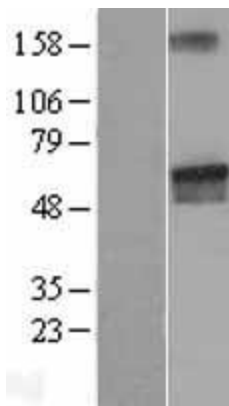
Locus ID: 55203

UniProt ID: [Q8N0V4](#)

Cytogenetics: 4p15.2
Domains: LRRCT, LRR, EPTP
Protein Families: Secreted Protein, Transmembrane
MW: 62.3 kDa
Gene Summary: Required for the development of soma-targeting inhibitory GABAergic synapses made by parvalbumin-positive basket cells.[UniProtKB/Swiss-Prot Function]

Product images:


Circular map for RC211015



Western blot validation of overexpression lysate (Cat# [LY402669]) using anti-DDK antibody (Cat# [TA50011-100]). Left: Cell lysates from untransfected HEK293T cells; Right: Cell lysates from HEK293T cells transfected with RC211015 using transfection reagent MegaTran 2.0 (Cat# [TT210002]).