

Product datasheet for **RC211014**

APCDD1L (NM_153360) Human Tagged ORF Clone

Product data:

Product Type:	Expression Plasmids
Product Name:	APCDD1L (NM_153360) Human Tagged ORF Clone
Tag:	Myc-DDK
Symbol:	APCDD1L
Mammalian Cell Selection:	Neomycin
Vector:	pCMV6-Entry (PS100001)
E. coli Selection:	Kanamycin (25 ug/mL)



[View online »](#)

ORF Nucleotide Sequence:

>RC211014 ORF sequence
 Red=Cloning site Blue=ORF Green=Tags(s)

TTTTGTAATACGACTCACTATAGGGCGGCCGGAATTCGTCGACTGGATCCGGTACCGAGGAGATCTGCC
 GCC**CGGATCGCC**

ATGCCCGCAGCCATGCTCCCCTACGCTTGCCTCGTGGTCTTTGGGAGCCACACTGCACCGCGGCTG
 GGGAGGCCGGGGCAGCTGCCTGCGCTGGGAACCCCACTGCCAGCAGCCCTTGCCAGATAGAGTGCCAG
 CACTGCGATCCTGCCTCCACGCCTTAATGGACCTTGGATCCTCACAGGCTGCGAGGTGCGCCAGGACCG
 GAGTTCCTGACCCGCGCTACACCTTACCCAGCCGGCTTTTCGAGCCACCAGTTCTACTACGAGG
 ACCCTTCTGCGGGGAACCTGCCACTCGCTGCTCGTCAAGGGCAAAGTCCGCCTGCGCCGGGCTCCTG
 GGTACCCGGGGAGCCACCGAGGCCGACTACCACCTGCACAAGGTGGGCATCGTCTTCCACAGCCCGCG
 GCCCTGGTCGACGTCACCGGGCGCTCAACCAGACCCGCGCCGGGACTGCGCGCGGCGCTGCCTC
 CGGCCCGGCTGGTGCCTGGGGCGTGTACGAGCTGCGGAGCGCCGGGCTCAGGGGACTGCCTGGA
 GGCCTGGGCTCACCATGCACGAGCTCAGCCTGGTCCGCGTGCAGCGCCGCTGCAGCCGAGCCCGG
 GCGTCGCCCCGGCTGGTGGAGGAGCTGTACCTGGGGACATCCACACCGACCCGGCGGAGAGGCGGCACT
 ACCGGCCACGGGCTACCAGCGCCGCTGCAGAGCGCACTGCACCACGTGACGCCGTGCCAGCCTGTGG
 CCTATTGCCCGCTCCGATGTGCACCACCCGCGTGTGCCGCCCTCTGGCCCTGCCCTGCACCTG
 GGCGGCTGGTGGGTACGCTCGGGTGGGAGGTGCGCCAGCAGTCTGTTCTCACCCGGCTTCTCACTT
 TCCACGGGCACAGCCGCTCCTGGGAAGGATTAACACCACCTTCTCAGACCCAGCCTGCCGGCAGCCAC
 CTTACCGTGTATGCCGCCGGCGCTACACCAGGGCACGCCATCCACAGGGTCCGCGGGCAGCCAG
 CTGGTGTTTGAGGTACACGGGCCATGTACCCCATGGACCAGGTACCACGGCCATGCTCAACTTCT
 CTGAGCCAAGCAGCTGTGGGGTGGGGGCTGGTCCATGGGCACTGAGCGGGATGTACAGCCACCAA
 CGGCTGCCTACCGCTGGGCATCCGGCTCCCGCATGTGGAGTACGAGCTTTTCAAGATGGAACAAGACCC
 CTCGGGCAAAGCCTGCTTCTCATCGGACAAAGGCCACCGATGGCTCAAGTCCCGATACCCAGAGAAAC
 GTCCACCTCCTACCAAGCACCCCTGGTCTGTGTATGGGGAGGCCCGGACTTCTCCAGGCCACCGCA
 GCACAGGCCATCGCTGCAGAAGCACCCAGCACAGGGGTCTTACATAGCCCCCTCCACTTCTGCC
 CTAGTTCTAGGGTGGCCTTCTCCACTGGTA

ACGGTACGCGGCCGCTCGAGCAGAACTCATCTCAGAAGAGGATCTGGCAGCAATGATATCCTGGATT
ACAAGGATGACGACGATAAGTTTAA

Protein Sequence:

>RC211014 protein sequence
 Red=Cloning site Green=Tags(s)

MPAAMPLPYACVLVLLGAHTAPAAGEAGGSCLRWEPHCQQPLPDRVPSTAILPPRLNGPWISTGCEVRPGP
 EFLTRAYTFYPSRLFRAHQFYEDPFCGEPASLLVKGKVRLLRRASWVTRGATEADYHLHKVIVFHSRR
 ALVDVTGRLNQTRAGRDCARRLPPARAWLPGALYELRSARAQGDCEALGLTMHELSLVRVQRRLQPPR
 ASPRLVEELYLGD IHTDPAERRHYRPTGYQRPLQSALHHVQPCPACGLIARSDVHHPPVLPPLALPLHL
 GGWWVSSGCEVRPAVLFLTRLFTFHGHSRSWEGYHHFSDPACRQPTFTVYAAGRYTRGTPSTRVGGTE
 LVFEVTRAHVTPMDQVTTAMLNFSPPSSCGGAGAWSMGTERDVTATNGCLPLGIRLPHVEYELFKMEQDP
 LGQSLF IQRPTDGSSPDTPKRPSTYQAPLVLCHGEAPDFSRPPQHRPSLQKHPSTGGLHIAPFPLLP
 LVLGLAFLHWL

TRTRPLEQKLISEEDLAANDILDYKDDDDKV

Chromatograms:

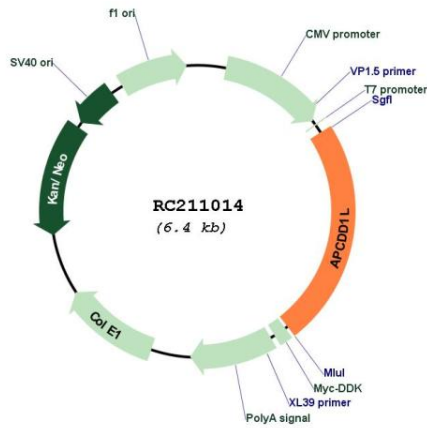
https://cdn.origene.com/chromatograms/mk6591_g10.zip

Restriction Sites:

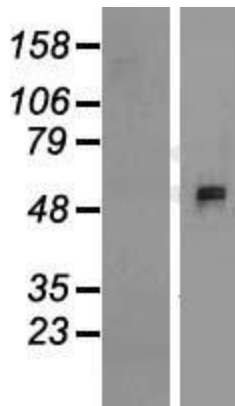
Sgfl-MluI

MW: 55.6 kDa

Product images:



Circular map for RC211014



Western blot validation of overexpression lysate (Cat# [LY407073]) using anti-DDK antibody (Cat# [TA50011-100]). Left: Cell lysates from untransfected HEK293T cells; Right: Cell lysates from HEK293T cells transfected with RC211014 using transfection reagent MegaTran 2.0 (Cat# [TT210002]).