

Product datasheet for **RC211012**

RGL3 (NM_001035223) Human Tagged ORF Clone

Product data:

Product Type:	Expression Plasmids
Product Name:	RGL3 (NM_001035223) Human Tagged ORF Clone
Tag:	Myc-DDK
Symbol:	RGL3
Mammalian Cell Selection:	Neomycin
Vector:	pCMV6-Entry (PS100001)
E. coli Selection:	Kanamycin (25 ug/mL)



[View online »](#)

**ORF Nucleotide
Sequence:**

>RC211012 ORF sequence
 Red=Cloning site Blue=ORF Green=Tags(s)

TTTTGTAATACGACTCACTATAGGGCGGCCGGGAATTCGTCGACTGGATCCGGTACCGAGGAGATCTGCC
 GCC**CGGATCGCC**

ATGGAGCGCACAGCAGGCAAAGAGCTGGCCTGGCACCCTGCAGGACTGGGGTGAAGAGACCGAGGACG
 GCGCGGTGTACAGTGTCTCCCTGCGGCGGCAGCGCAGTCAGCGCAGGAGCCCGCGGAGGGCCCGGGG
 CAGCCAGGCTCCAGCCCATTTGCCAATACCTTCTCCACTATCGAACCAAGGTGAGGGTGCTGAGG
 GCAGCGCGCTGGAGCGCTGGTGGGAGAGTTGGTGTGGAGACCGTGAGCAGGACCCAGCTTATGC
 CCGCTTCTGGCCACCTACCGGACCTTGTACCCACTGCCTGCCTGCTGGGCTTCTGCTGCCACCAAT
 GCCACCGCCCCACCTCCCGGGTAGAGATCAAGAAGACAGCGGTACAAGATCTGAGCTTCAACAAGAAC
 CTGAGGGTGTGGTGTCACTGCTGGGCTCCTGGCTGCAGGACCACCTCAGGATTTCCGAGACCCCTG
 TCCATTCGGACCTGGGCAGTGTCCGAACCTTTCTGGGCTGGGCGGCCAGGGAGTGCTGAGGCTCAAAA
 AGCAGAGAAGCTTCTGGAAGATTTTTGGAGGAGGCTGAGCGAGAGCAGGAAGAGGAGCCGCTCAGGTG
 TGGACAGGACCTCCAGAGTTGCCCAAACCTTCTGACCCAGACTTTCAGAGGCCTGCGCGGAGGAAGAGG
 AAGGGCTCATGCCTCAAGGTCCCAAGCTCCTGGACTTCAGCGTGGACGAGGTGGCCGAGCAGCTGACCT
 CATAGACTTGAGCTCTTCTCCAAGGTGAGGCTTACGAGTGCTGGGCTCCGTGTGGTCCGAGAGGGAC
 CGGCCGGGGTGCAGGCGCCTCCCCACTGTGCGCGCCACCGTGGCCAGTTCAACACCGTGACCGGT
 GTGTGCTGGGTTCCGTGCTCGGAGCACCAGGCTTGGCCGCCCCGAGAGGGCGCAGCGGCTGGAGAAAGT
 GATCCGCATCGCCAGCGCTGCCGAGAAGTGGGAACTTCTCTCCTTGCAGCCATCTGTCCGCCCTG
 CAATCTAACCCCATCTACCGCTCAAGCGCAGCTGGGGGGCCGTGAGCCGGAACCGTATCTACTTTCA
 GGAACTTTTCGAGATTTTCTCCGATGAGAACAACCCTCAGCAGCAGAGAGATTCTTTCCAGGAGGA
 GGCCACTGAGGGATCCCAAGAAGAGGACAACACCCAGGCAGCCTGCCCTCAAAACACCCCCAGGCCCT
 GTCCCTACCTTGGCACCTTCTTACGGACCTGGTTATGCTGGACACAGCCCTGCCGGATATGTTGGAGG
 GGGATCTCATTAACTTTGAGAAGAGGAGGAAGGAGTGGGAGATCCTGGCCGCATCCAGCAGCTGCAGAG
 GCGCTGTGAGAGCTACACCCTGAGCCCCACCCGCCATCCTGGCTGCCCTGCATGCCAGAACAGCTC
 ACCGAGGAGCAGAGCTACCGCTCTCCCGGTCTTGGCCACCAGCTGCCTCCTGCCAGCTCCCCAC
 GCATCCGACGGCGGATCAGCCTACCAAGCGTCTCAGTGCAGAGCTTGGCCGAGAGAAAAGCTCATCACC
 TAGTGGGAGTCCCGGGATCCCTCATCCCCACCTCCAGTGTGTCCCAGGGTACCCCCCTCAAGTCT
 AGAAGCAGAGATGCTCCTGCTGGCAGTCCCCGGCCTCTCCAGGGCCCCAGGGCCCCAGCACAAGCTGC
 CCTGAGCCTGGACCTGCCAGCCCCGGCCCTTTCGCTTTGCCTTGGGAGCCCTCGAATCCCCCTCCC
 GCGCAGCAGAGCTCGGAGGCCGTGTCATCCGCTCAGCATCGACAATGACCACGGGAACCTGTATCGA
 AGCATCTTGTGACCAGTCAGGACAAAGCCCCAGCGTGGTCCGGCGAGCCTTGCAGAAGACAATGTGC
 CCCAGCCTGGGCTGTGACTATCAGCTCTTCAAGTCTTCTGGGACCGGGTGTCTCTGATTCTGA
 CAATGCCAACGTCTTCTATGCCATGAGTCCAGTCGCCCCAGAGACTTTCATGCTGCGCGGAAAGAGGGG
 ACCCGAACACTCTGTCTGTCTCCCAAGC

ACGCGTACGCGGCCGCTCGAGCAGAACTCATCTCAGAAGAGGATCTGGCAGCAAATGATATCCTGGATT
 ACAAGGATGACGACGATAAGGTTTAA

Protein Sequence: >RC211012 protein sequence
 Red=Cloning site Green=Tags(s)

MERTAGKELALAPLQDWGEETEDGAVYSVSLRRQRSQRRSPAEGPGGSQAPSPIANTFLHYRTSKVRVLR
 AARLERLVGELVFGDREQDPSFMPAFLATYRTFVPTACLLGFLPPMPPPPPGVEIKKTAVQDL SFNKN
 LRAVVSVLGSWLQDHPQDFRDPVHSDLGSRVTF LGWAAPGSAEAQKAELLED FLEEAEEREQEEPPQV
 WTGPPRVAQTS DPDSSEACAE EEEGLMPQGPQLLDFSVDEVAEQL TLIDLELFSKVRLYECLGSVWSQRD
 RPGAAGASPTVRATVAQFNTVTGCVLGSV LGAPGLAAPQRAQRLEKWIRIAQRCRELRNFSSLRAILSAL
 QSNPIYRLKRSWGAVSREPLSTFRKLSQIFSDENNHLSSREILFQEEATEGSQEEDNTPGSLPSKPPPGP
 VPYLGTFLTDLVMLDTALPDMLEGDLINFEKRRKEWEILARIQQLQRRCSYTLSPHPPILAALHAQNQL
 TEEQSYRLSRVIEPPAASCSPSPRIRRRISLTKRLSAKLAREKSSSPSGSPGDPSSPTSSVSPGSPSSP
 RSRDAPAGSPASPQPSTKLPLSLDLPSRPFALPLGSPRIPLPAQQSSEARVIRV SIDNDHGNLYR
 SILLTSQDKAPSVVRRALQKHNVPQPWACDYQLFQVLPGDRVLLIPDNANVFYAMSPVAPRDFMLRRKEG
 TRNTLSVSPS

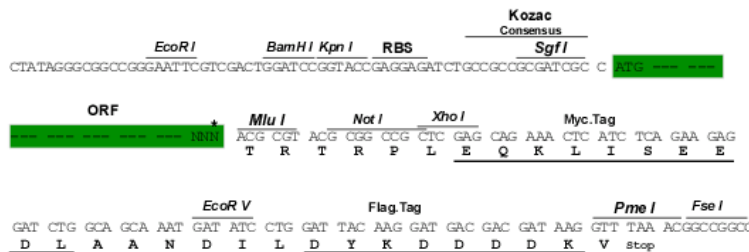
TRTRPLEQKLI SEEDLAANDILDYKDDDDKV

Chromatograms: https://cdn.origene.com/chromatograms/mk6591_e10.zip

Restriction Sites: Sgfl-MluI

Cloning Scheme:

Cloning sites used for ORF Shuttling:



* The last codon before the Stop codon of the ORF

ACCN: NM_001035223

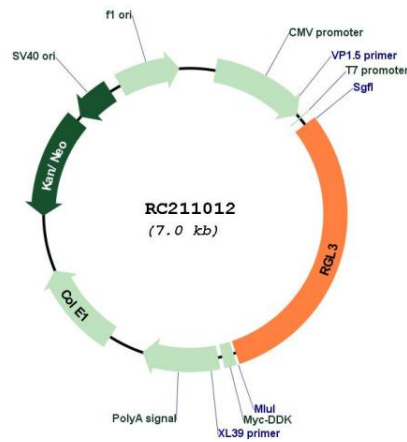
ORF Size: 2130 bp

OTI Disclaimer: The molecular sequence of this clone aligns with the gene accession number as a point of reference only. However, individual transcript sequences of the same gene can differ through naturally occurring variations (e.g. polymorphisms), each with its own valid existence. This clone is substantially in agreement with the reference, but a complete review of all prevailing variants is recommended prior to use. [More info](#)

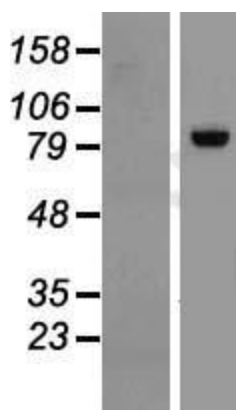
OTI Annotation: This clone was engineered to express the complete ORF with an expression tag. Expression varies depending on the nature of the gene.

Components:	The ORF clone is ion-exchange column purified and shipped in a 2D barcoded Matrix tube containing 10ug of transfection-ready, dried plasmid DNA (reconstitute with 100 ul of water).
Reconstitution Method:	<ol style="list-style-type: none"> 1. Centrifuge at 5,000xg for 5min. 2. Carefully open the tube and add 100ul of sterile water to dissolve the DNA. 3. Close the tube and incubate for 10 minutes at room temperature. 4. Briefly vortex the tube and then do a quick spin (less than 5000xg) to concentrate the liquid at the bottom. 5. Store the suspended plasmid at -20°C. The DNA is stable for at least one year from date of shipping when stored at -20°C.
Note:	Plasmids are not sterile. For experiments where strict sterility is required, filtration with 0.22um filter is required.
RefSeq:	<u>NM_001035223.1, NP_001030300.1</u>
RefSeq Size:	2553 bp
RefSeq ORF:	2133 bp
Locus ID:	57139
UniProt ID:	<u>Q3MIN7</u>
Cytogenetics:	19p13.2
MW:	78.1 kDa
Gene Summary:	Guanine nucleotide exchange factor (GEF) for Ral-A. Potential effector of GTPase HRas and Ras-related protein M-Ras. Negatively regulates Elk-1-dependent gene induction downstream of HRas and MEKK1 (By similarity).[UniProtKB/Swiss-Prot Function]

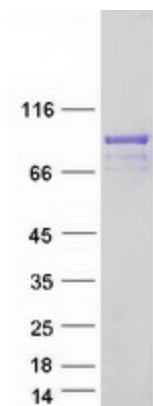
Product images:



Circular map for RC211012



Western blot validation of overexpression lysate (Cat# [LY422124]) using anti-DDK antibody (Cat# [TA50011-100]). Left: Cell lysates from untransfected HEK293T cells; Right: Cell lysates from HEK293T cells transfected with RC211012 using transfection reagent MegaTran 2.0 (Cat# [TT210002]).



Coomassie blue staining of purified RGL3 protein (Cat# [TP311012]). The protein was produced from HEK293T cells transfected with RGL3 cDNA clone (Cat# RC211012) using MegaTran 2.0 (Cat# [TT210002]).