

Product datasheet for **RC211008**

ITPRIPL2 (NM_001034841) Human Tagged ORF Clone

Product data:

Product Type:	Expression Plasmids
Product Name:	ITPRIPL2 (NM_001034841) Human Tagged ORF Clone
Tag:	Myc-DDK
Symbol:	ITPRIPL2
Mammalian Cell Selection:	Neomycin
Vector:	pCMV6-Entry (PS100001)
E. coli Selection:	Kanamycin (25 ug/mL)



[View online »](#)

ORF Nucleotide Sequence:

>RC211008 representing NM_001034841
 Red=Cloning site Blue=ORF Green=Tags(s)

TTTTGTAATACGACTCACTATAGGGCGGCCGGGAATTCGTCGACTGGATCCGGTACCGAGGAGATCTGCC
 GCC**CGGATCGCC**

ATGTCGGTGCCTACACCCTCAATCTACGCGTCTTCTGGCCCTGGTGACCGGCCTGTGCACCGCCCTGG
 TGTGCCTCTACCATGTCTGCGGGGAAGCGGGGCGCCGGGCGAGCCGCGACGGCGTGGATGGCGG
 CTTCCCGTTGCTTAAGGTGGCCGTCTGCTCCTCCTCAGCTATGTCCTCCTGCGCTGTGCCACGCTGT
 CGGCAGCGCTTCTGCCCCGGTCTCCCCGTCTGGAGGGTACGCCGCTTCTCCTCGAGACACTCCGAG
 AGCCGGGCTCAGCATCTGCTGGAGAGTTACTACGAGCATGAGGTGCGCCTGTCTCCGACGTTGGG
 CCACAGCAAGGCGCACGTGAGCCGGATCGTGGGCGAGCTGGTGGGGCTGGCCGCGCCGGGGTCCCC
 GGTCTATTCTGGGGAGCGCTGGCCTTGGCCTTCCGCGGAGACTTCATCCAGGTGGGACGCGCTACG
 AGCAACATAAAATCCGCCGGCCGACAGCTTCGACGTGCTGGTGCCTGCGCCTCCCGCCTTGTGGC
 GCTGGAGCCAGGAGCCTGGGCGAGGAGCCAGCGCTGGCCCGCCTTCCGCGGTGCTTCTTGTGGCC
 CTAAGGCAACCCCTACCATCGGGGGCTCGGGGGCCACTGGCTTCGGGACTGCAAACCCCTTGTCTG
 ATGCCTTCTGCGTGGATGTGCGCGGGCGCGCTACCTCTCTGCTACTCTGGTGTGCGCTGGTCCAGTC
 GCATCTGCAGCGCTCCTTGGCCACTGTGCGTTACAGCCTGGAGGGGCGCTGTCCGGTACCTTGACCCCA
 GGTGGCCTGGAACAGCCCCACCTTACACATCTTGCCTGCCGACTGACTACGGCTGTGCCGCTTT
 CTATGGCTGTGCGTCTCATCCCCGTGTCCATCTGGGAGATGGGTCTTCTTGTGGCGCCACCACCGCC
 ACCCTTGGCCAGCGCCCTGTGGAGCTCCCTGAGGGCCTGCGTGGGAGGACTGTGGGGTGTGAAC
 ACAGCACGCCAGGAGCAGAAGCTGCTGAGTTGGCTGCAGAACGGGACGCTCCAGGTGCTGCTACTCA
 AGTGCCTGCAGTTGCTTAAGGCTCTGCGCGATCTGGGGCCCGTGGGCTGGACTCAGCGCCGCCACCCA
 GTGGGGACGCATCCTATCCTCATATGTGCTCAAGACAGTGTCTGGCAGTGTCTGCGCAAGGGGGCC
 CCTGGGCAAGGCTGGGACGAGGACACCTGGGAAGGTGTTTGGAGGAGTTGGTGCAGTTCCTTAGGGACT
 GCCTGCTGCGACGCCATACGCTCTTCCACTGCGTCTGGGCCCTGGTGGGGCGGCTGCCAGGTGGGTCC
 CCTGCCAAGGCACTGAGGGAAGCCGCCAGTTGACCTCCTGGCCGCTTTCGACGGGCACGCCGGGAA
 CTTGCAGCAGCGGTTGCTGTCCACGTGGCAAAGGCTGCCCCAGCTTCTCCGGGCTACGGGGTCCCC
 GCTACCTTGCAGGTGCCCCCACCCGGAGTCAGCGCACCCAGGGCTTCTTGAAGGTGAACCG

AG**CGGACCG**ACGCGTACGCGGCCGCTCGAGCAGAACTCATCTCAGAAGAGGATCTGGCAGCAAATGATATCC
 TGGATTACAAGGATGACGACGATAAGGTTTAA

Protein Sequence:

>RC211008 representing NM_001034841
 Red=Cloning site Green=Tags(s)

MSVHYTLNLRVFWPLVTGLCTALVCLYHVLRGSGGARAEPADGVDGGFPLLKVAVLLLLSYVLLRCRHAV
 RQRFLPGSPRLEGHAASFSSRFREPGLSILLESYVEHEVRLSPHVLGSHKAHVSRIVGELVRAGRARGSP
 GLIPGGALALAFRGDFIQVGSAYEQHKIRRPDSFDVLVPLRLPPLVALEPRSLGEEPALAPAFRGCFCA
 LKAPPPSPSGAGGHWLRDCKPFADAFVVDVRRRHL SATLVLRWFQSHLQRSLATVRYSLGRCRVTLTP
 GGLEQPPTLHILPCRTDYGCCRLSMAVRLIPAVHLGDGVFLVAPPPPLPSAPLLELPEGLRAEALWGN
 TARQEQLLSWLQERAAPGACYLKCLQLKALRDLGARGLDAAAATQWGRILSSYVLKTVLLAVLLRKA
 PGQGWDEEHLGRCLEELVQFLRDCLLRHTLFHCVLGPGGAAAEVGPLPKALREAAVDDLAAFDGHARE
 LAAARLLSTWQLPQLLRAYGGPRYLARCPPRSQRTQGFLEGEF

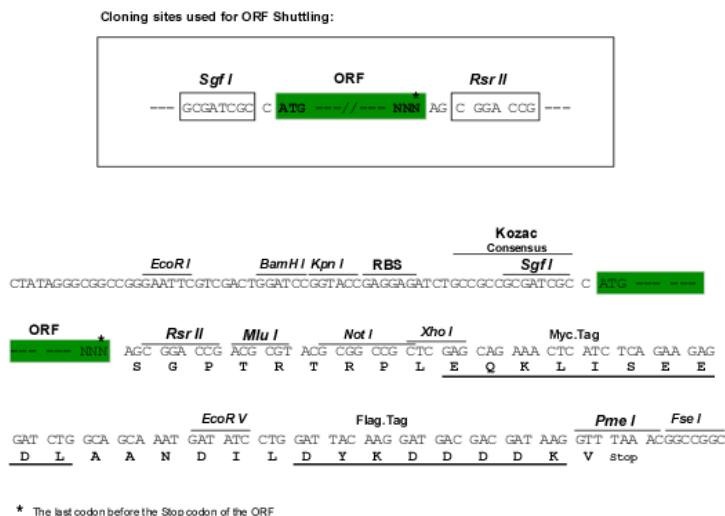
SGPTRTRRLEQKLI SEEDLAANDILDYKDDDDKV

Chromatograms:

https://cdn.origene.com/chromatograms/mk8102_c07.zip

Restriction Sites:

Sgfl-RsrII

Cloning Scheme:


ACCN: NM_001034841

ORF Size: 1605 bp

OTI Disclaimer: The molecular sequence of this clone aligns with the gene accession number as a point of reference only. However, individual transcript sequences of the same gene can differ through naturally occurring variations (e.g. polymorphisms), each with its own valid existence. This clone is substantially in agreement with the reference, but a complete review of all prevailing variants is recommended prior to use. [More info](#)

OTI Annotation: This clone was engineered to express the complete ORF with an expression tag. Expression varies depending on the nature of the gene.

Components: The ORF clone is ion-exchange column purified and shipped in a 2D barcoded Matrix tube containing 10ug of transfection-ready, dried plasmid DNA (reconstitute with 100 ul of water).

Reconstitution Method:

1. Centrifuge at 5,000xg for 5min.
2. Carefully open the tube and add 100ul of sterile water to dissolve the DNA.
3. Close the tube and incubate for 10 minutes at room temperature.
4. Briefly vortex the tube and then do a quick spin (less than 5000xg) to concentrate the liquid at the bottom.
5. Store the suspended plasmid at -20°C. The DNA is stable for at least one year from date of shipping when stored at -20°C.

RefSeq: [NM_001034841.4](#)

RefSeq Size: 7722 bp

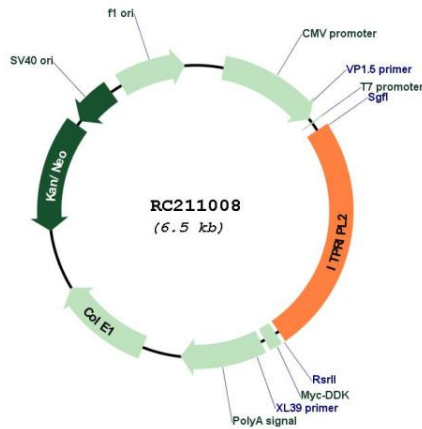
RefSeq ORF: 1608 bp

Locus ID: 162073

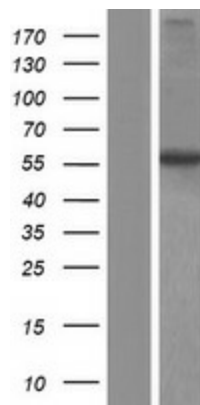
UniProt ID: [Q3MIP1](#)

Cytogenetics: 16p12.3
Protein Families: Transmembrane
MW: 58.4 kDa

Product images:



Circular map for RC211008



Western blot validation of overexpression lysate (Cat# [LY421966]) using anti-DDK antibody (Cat# [TA50011-100]). Left: Cell lysates from untransfected HEK293T cells; Right: Cell lysates from HEK293T cells transfected with RC211008 using transfection reagent MegaTran 2.0 (Cat# [TT210002]).