

Product datasheet for RC211004

NFATC2IP (NM_032815) Human Tagged ORF Clone

Product data:

Product Type:	Expression Plasmids
Product Name:	NFATC2IP (NM_032815) Human Tagged ORF Clone
Tag:	Myc-DDK
Symbol:	NFATC2IP
Synonyms:	ESC2; NIP45; RAD60
Mammalian Cell Selection:	Neomycin
Vector:	pCMV6-Entry (PS100001)
E. coli Selection:	Kanamycin (25 ug/mL)
ORF Nucleotide Sequence:	>RC211004 ORF sequence Red=Cloning site Blue=ORF Green=Tags(s)

TTTTGTAATACGACTCACTATAGGGCGGCCGGAATTCGTCGACTGGATCCGGTACCGAGGAGATCTGCC
GCC**CGATCGCC**

ATGGCGGAGCCTGTGGGAAGCGGGCCGCTGGTCCGGAGGTAGCGGTGCCGGCCGAGGGGGTGGGGCG
GCTGGGGCGGTGGGGCCGGCGTCTCGGGCCAGCGGTCTCCATCCCGGGCACGCTGGACGTAGTGTC
TGTGGACTTGGTACCGACAGCGATGAGGAAATCTGGAGGTCCGACCCTCGCGGTGCCGCGGACGAG
GTTGAGGTGGAGCCCCGGAGCCCCGGGGCCGGTCCGCTCCCGGATAACAGCAACAGTGACAGCGAAG
GGGAGGACAGGCGCCCGCAGGACCCCCGGGAGCCGGTCAGGGCGCGCGCGCTGGTCTGGATCC
GGGGAGGCGCCGCTGGTCCGGTGTACTCGGGGAAGGTTAAAAGCAGCCTTCGCCTTATCCAGATGAT
CTATCCCTCCTGAACTCTACCTCCAGGGATGAGGAAGAGGCAGAGCTGGCAGATTCGAGTGGTCTCT
ACCATGAGGGCTCCCCATCACCAGGCTCTCCCTGGAAGACAAAGCTGAGGACTAAGGATAAAGAAGAGAA
GAAAAAGACAGAGTTTCTGGATCTGGACAACTCTCCTCTGTCCCCACCTTACCAAGGACCAAAAGCAGA
ACGCATACTCGGGCACTCAAGAAGTTAAGTGAGGTGAACAAGCGCCTCCAGGATCTCCGTTCTGTCTGA
GCCCAAGCCACCTCAGGGTCAAGAGCAACAGGGCCAAGAGGATGAAGTGGTCTTGGTGGAGGGCCAC
CCTCCCAGAGACCCCCGACTCTTCCACTCAAATCCGTTGCCGGCTGACCTGGTCTGAGATTGCCCTC
AGGATGTCGGAGCCCCGTCAGAGTGTGGTGGACCACATGGCCACCCACCTTGGGGTGTCCCAAGCAGGA
TCCTTTTGCTTTTGGAGAGACAGAGCTATCACCTACTGCCACTCCAGGACCCTAAAGCTCGGAGTGCC
TGACATCATTGACTGTGTGGTACTAACAAGTTCTCCAGAGCCACAGAGACGTCCTCAACAGCTCCAGCTC
CGGGTGCAGGAAAGGAGAAACACCAGACACTGGAAGTCTCACTGTCTCGAGATTCCTTAAAGACCC
TCATGTCCACTATGAGGAGGCCATGGGACTGTCGGGACGGAAGCTCTCCTTCTTTGATGGGACAAA
GCTTTCAGGCAGGGAGCTGCCAGCTGACCTGGGCATGGAATCTGGGGACCTCATTGAGGTCTGGGC

ACGCGTACGCGGCCGCTCGAGCAGAACTCATCTCAGAAGAGGATCTGGCAGCAAATGATATCTGGATT
ACAAGGATGACGACGATAAGGTTTAA



[View online >](#)

Protein Sequence: >RC211004 protein sequence
Red=Cloning site Green=Tags(s)

MAEPVVKRGRWSGGSGAGRGGGGRGGRRRPRAQRSPSRGTLDVVSVDLVTDSDDEEILEVATARGAADE
 VEVEPEPPPGPVASRDNSNSDSEGEDRRPAGPPREPVRRRRRLVLDPGEAPLVPVYSGKVKSSLRLIPDD
 LSLKLYPPGDEEEAELADSSGLYHEGSPSPGSPWKTKLRTKDKKEKKTEFLDLDNSPLSPSPRTKSR
 THTRALKKLSEVNRKQLDLRSCLSPKPPQGGQEQGQEQDEVVLVEGPTLPETPRLFPLKIRCADLVRLPL
 RMSEPLQSVVDHMATHLGVSPSRILLFLGETELSPATPRTLKLVADIIDCVLTSPEATETSQQLQL
 RVQGKEKHQTLEVSLSRDSPLKTLMSHYEAMGLSGRKL SFFFDGTKLSGRELPADLGMESGDLIEVWG

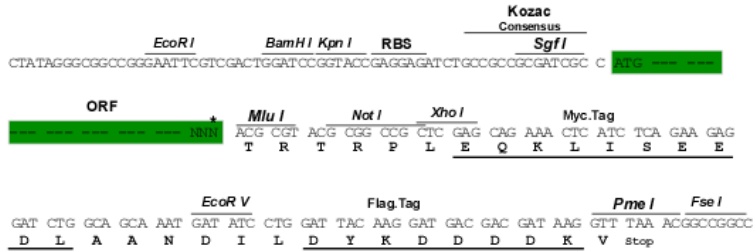
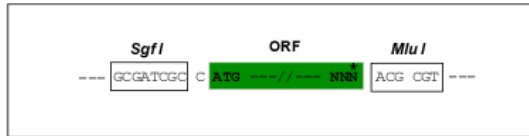
TRTRPLEQKLISEEDLAANDILDYKDDDDKV

Chromatograms: https://cdn.origene.com/chromatograms/mk6591_g05.zip

Restriction Sites: SgfI-MluI

Cloning Scheme:

Cloning sites used for ORF Shuttling:



* The last codon before the Stop codon of the ORF

ACCN: NM_032815

ORF Size: 1257 bp

OTI Disclaimer: The molecular sequence of this clone aligns with the gene accession number as a point of reference only. However, individual transcript sequences of the same gene can differ through naturally occurring variations (e.g. polymorphisms), each with its own valid existence. This clone is substantially in agreement with the reference, but a complete review of all prevailing variants is recommended prior to use. [More info](#)

OTI Annotation: This clone was engineered to express the complete ORF with an expression tag. Expression varies depending on the nature of the gene.

Components: The ORF clone is ion-exchange column purified and shipped in a 2D barcoded Matrix tube containing 10ug of transfection-ready, dried plasmid DNA (reconstitute with 100 ul of water).

Reconstitution Method:

1. Centrifuge at 5,000xg for 5min.
2. Carefully open the tube and add 100ul of sterile water to dissolve the DNA.
3. Close the tube and incubate for 10 minutes at room temperature.
4. Briefly vortex the tube and then do a quick spin (less than 5000xg) to concentrate the liquid at the bottom.
5. Store the suspended plasmid at -20°C. The DNA is stable for at least one year from date of shipping when stored at -20°C.

RefSeq: [NM_032815.3](#), [NP_116204.3](#)

RefSeq Size: 3877 bp

RefSeq ORF: 1260 bp

Locus ID: 84901

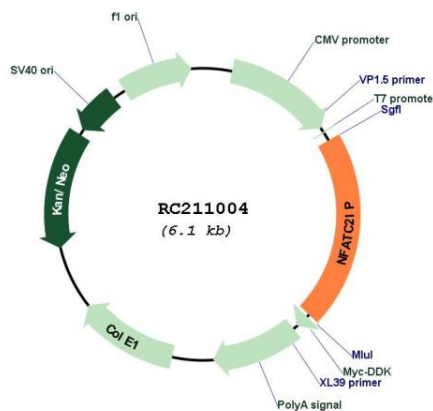
UniProt ID: [Q8NCF5](#)

Cytogenetics: 16p11.2

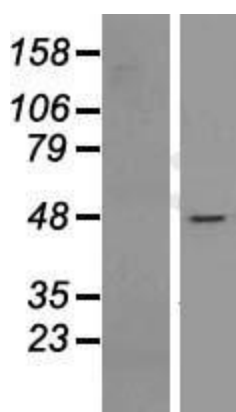
MW: 45.8 kDa

Gene Summary: In T-helper 2 (Th2) cells, regulates the magnitude of NFAT-driven transcription of a specific subset of cytokine genes, including IL3, IL4, IL5 and IL13, but not IL2. Recruits PRMT1 to the IL4 promoter; this leads to enhancement of histone H4 'Arg-3'-methylation and facilitates subsequent histone acetylation at the IL4 locus, thus promotes robust cytokine expression (By similarity). Down-regulates formation of poly-SUMO chains by UBE2I/UBC9 (By similarity). [UniProtKB/Swiss-Prot Function]

Product images:



Circular map for RC211004



Western blot validation of overexpression lysate (Cat# [LY409942]) using anti-DDK antibody (Cat# [TA50011-100]). Left: Cell lysates from untransfected HEK293T cells; Right: Cell lysates from HEK293T cells transfected with RC211004 using transfection reagent MegaTran 2.0 (Cat# [TT210002]).