

Product datasheet for **RC211003**

ZSCAN4 (NM_152677) Human Tagged ORF Clone

Product data:

Product Type:	Expression Plasmids
Product Name:	ZSCAN4 (NM_152677) Human Tagged ORF Clone
Tag:	Myc-DDK
Symbol:	ZSCAN4
Synonyms:	ZNF494
Mammalian Cell Selection:	Neomycin
Vector:	pCMV6-Entry (PS100001)
E. coli Selection:	Kanamycin (25 ug/mL)



[View online »](#)

ORF Nucleotide Sequence:

>RC211003 ORF sequence
 Red=Cloning site Blue=ORF Green=Tags(s)

TTTTGTAATACGACTCACTATAGGGCGGCCGGAATTCGTCGACTGGATCCGGTACCGAGGAGATCTGCC
 GCC**CGGATCGCC**

ATGGCTTTAGATCTAAGAACCATATTTTCAGTGTGAACCATCCGAGAATAATCTTGGATCAGAAAATTCAG
 CGTTTCAACAAAGCCAAGGACCTGCTGTTCAAGAGAGAAGAAGGGATTTCTGAGTTCTCAAGAATGGTGCT
 CAATTCATTTCAAGACAGCAATAATTCATATGCAAGGCAGGAATTGCAAAGACTTTATAGGATCTTTCAC
 TCATGGCTGCAACCAGAAAAGCACAGCAAGGATGAAATATTTCTCTATTAGTCTGGAGCAGTTTATGA
 TTGGTGGCCACTGCAATGACAAAGCCAGTGTGAAAGAGAAATGGAAATCAAGTGGCAAAAACCTGGAGAG
 ATTCATAGAAGACCTGACTGATGACAGCATAAATCCACCTGCCTTAGTCCACGTCCACATGCAGGGACAG
 GAAGCTCTCTTTCTGAGGATATGCCCTTAAGAGATGTCATTGTTTCATCTCACAAAACAAGTGAATGCC
 AAACCACAAGAGAAGCAAACATGGGACACCCCTCCAGACTTCCAAGATACTTCCTTAGAAACAGGACA
 AGGATATGAAGATGAACAAGATGGCTGGAACAGTTCTTCGAAAACACTCGAGTAATGAAAATATTACT
 AATCAAGGCAATCAAATAGTTTCCCTAATCATCATCCAGGAAGAGAACGGTCTAGGCCTGAAGAGGGAG
 GTGTTTCTTGTGACAACCATACAACCTCAAAAAGAGCAGAGCTAGTCACTGCTAGATCTCAGGAAGGGTC
 CATAAATGGAATCACTTTCCAAGGTGCCCTATGGTGTGGGAGCAGGGTGTATCTCAACCAGAGCAG
 TCCTCCCTGAGTCTGCCCTTACCACAGAGCAATGAGGGAAATTCACATGTGAGGTACATCAGAAAAG
 GATCCCATGGAGTCAAAAATCATACAATGTGAAGAATGCCCAAGGTCTTTAAGTATCTCTGTCACTT
 ATTAGCTCACCAGAGAAGACACAGGAATGAGAGGCCATTTGTTTGTCCGAGTGTCAAAAAGGCTTCTTC
 CAGATATCAGACCTACGGGTGCATCAGATAATTCACACAGGAAAGAAGCCTTTACATGCAGCATGTGTA
 AAAAGTCTTTCAGCCACAAAACCAACCTGCGGTCTCATGAGAGAATCCACACAGGAGAAAAGCCTTATAC
 ATGTCCCTTTTGTAAAGACAAGCTACCGCCAGTCATCCACATACCACCGCCATATGAGGACTCATGAGAAA
 ATTACCCTGCCAAGTGTTCCTCCACACAGAAGCTTCC

ACGCGTACGCGGCCGCTCGAGCAGAAACTCATCTCAGAAGAGGATCTGGCAGCAAATGATATCCTGGATT
 ACAAGGATGACGACGATAAGGTTTAA

Protein Sequence:

>RC211003 protein sequence
 Red=Cloning site Green=Tags(s)

MALDLRTIFQCEPSENNLGSNSAFQSQGPAVQREEGISEFSRMVLNSFQDSNNSYARQELQRLYRIFH
 SWLQPEKHSKDEIISLLVLEQFMIGGHCNDKASVKEKWKSSGKNLERFIEDLTDDSIINPPALVHVHMGGQ
 EALFSEDMPLRDVIVHLTKQVNAQTTREANMGTPSQTSQDTSLETGGYEDEQDGNSSSKTTRVNENIT
 NQGNQIVSLIIIEENGPRPEEGGVSSDNPYNSKRAELVTARSQEGSINGITFQGVPMVMGAGCISQPEQ
 SSPESALTHQSNEGNSTCEVHQKSHGVQKSYKCEECPKVFKYLCHLLAHQRRHRNERPFVCEPCQKGF
 QISDLRVHQI.IHTGKKPFTCSMCKKSFSHKTNLRSHERIHTGEKPYTCPFCKTSYRQSSTYHRHMRTHEK
 ITLPSVPSTPEAS

TRTRPLEQKLISEEDLAANDILDYKDDDDKV

Chromatograms:

https://cdn.origene.com/chromatograms/mk6371_c03.zip

Restriction Sites:

SgfI-MluI

Cloning Scheme:


ACCN: NM_152677

ORF Size: 1299 bp

OTI Disclaimer: The molecular sequence of this clone aligns with the gene accession number as a point of reference only. However, individual transcript sequences of the same gene can differ through naturally occurring variations (e.g. polymorphisms), each with its own valid existence. This clone is substantially in agreement with the reference, but a complete review of all prevailing variants is recommended prior to use. [More info](#)

OTI Annotation: This clone was engineered to express the complete ORF with an expression tag. Expression varies depending on the nature of the gene.

Components: The ORF clone is ion-exchange column purified and shipped in a 2D barcoded Matrix tube containing 10ug of transfection-ready, dried plasmid DNA (reconstitute with 100 ul of water).

Reconstitution Method:

1. Centrifuge at 5,000xg for 5min.
2. Carefully open the tube and add 100ul of sterile water to dissolve the DNA.
3. Close the tube and incubate for 10 minutes at room temperature.
4. Briefly vortex the tube and then do a quick spin (less than 5000xg) to concentrate the liquid at the bottom.
5. Store the suspended plasmid at -20°C. The DNA is stable for at least one year from date of shipping when stored at -20°C.

Note: Plasmids are not sterile. For experiments where strict sterility is required, filtration with 0.22um filter is required.

RefSeq: [NM_152677.2](#), [NP_689890.1](#)

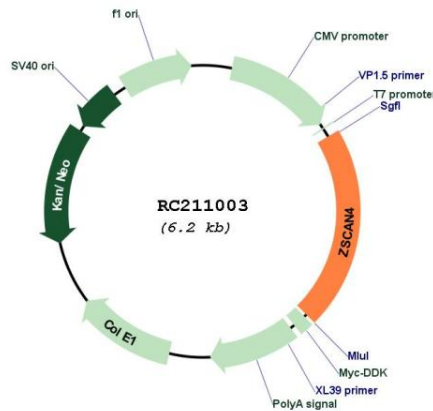
RefSeq Size: 2260 bp

RefSeq ORF: 1302 bp

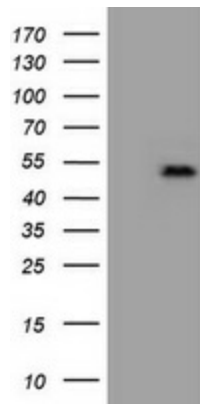
Locus ID: 201516

UniProt ID: [Q8NAM6](#)
Cytogenetics: 19q13.43
Protein Families: Transcription Factors
MW: 49 kDa
Gene Summary: The ZSCAN4 gene encodes a protein involved in telomere maintenance and with a key role in the critical feature of mouse embryonic stem (ES) cells, namely, defying cellular senescence and maintaining normal karyotype for many cell divisions in culture (Zalzman et al., 2010 [PubMed 20336070]).[supplied by OMIM, May 2010]

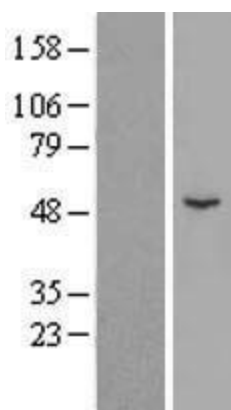
Product images:



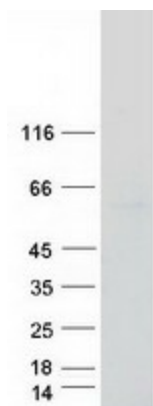
Circular map for RC211003



HEK293T cells were transfected with the pCMV6-ENTRY control (Cat# [PS100001], Left lane) or pCMV6-ENTRY ZSCAN4 (Cat# RC211003, Right lane) cDNA for 48 hrs and lysed. Equivalent amounts of cell lysates (5 ug per lane) were separated by SDS-PAGE and immunoblotted with anti-ZSCAN4(Cat# [TA800448]). Positive lysates [LY407355] (100ug) and [LC407355] (20ug) can be purchased separately from OriGene.



Western blot validation of overexpression lysate (Cat# [LY407355]) using anti-DDK antibody (Cat# [TA50011-100]). Left: Cell lysates from untransfected HEK293T cells; Right: Cell lysates from HEK293T cells transfected with RC211003 using transfection reagent MegaTran 2.0 (Cat# [TT210002]).



Coomassie blue staining of purified ZSCAN4 protein (Cat# [TP311003]). The protein was produced from HEK293T cells transfected with ZSCAN4 cDNA clone (Cat# RC211003) using MegaTran 2.0 (Cat# [TT210002]).