

Product datasheet for RC211001

Pur B (PURB) (NM_033224) Human Tagged ORF Clone

Product data:

Product Type:	Expression Plasmids
Product Name:	Pur B (PURB) (NM_033224) Human Tagged ORF Clone
Tag:	Myc-DDK
Symbol:	Pur B
Synonyms:	PURBETA
Mammalian Cell Selection:	Neomycin
Vector:	pCMV6-Entry (PS100001)
E. coli Selection:	Kanamycin (25 ug/mL)
ORF Nucleotide Sequence:	>RC211001 representing NM_033224 Red=Cloning site Blue=ORF Green=Tags(s)

TTTTGTAATACGACTCACTATAGGGCGGCCGGAATTCGTCGACTGGATCCGGTACCGAGGAGATCTGCC
GCC**CGATCGCC**

ATGGCGGACGGCGACAGCGGCAGCGAGCGCGGGCGGGCGGGTGGGCCGTGCGGGTTCAGCCCGGTCCC
GCGGGCGCGGAGCAAGAGACGCAGGAGCTGGCCTCGAAGCGGCTGGACATCCAGAACAAGCGTTCTA
CTTAGATGTGAAGCAGAACGCCAAGGGCCGCTTCCTCAAGATCGCCGAGGTGGGCGGGCGGTTCCAAG
AGCCGCTCACGCTGTCCATGGCGGTGGCCCGGAGTTCGCGACTCGTGGCGACTTCATAGAACACT
ACGCGCAGCTGGCCCTAGCAGCCCGAGCAGCTGGCGGCTGGCGCCGAGGAGGGCGGGCGCCGCGGGC
CGCGCTCAAGAGCGAATTCCTGGTGCCTGAGAACCGAAGTACTACCTGGACCTCAAGGAGAACCAGCGC
GGCCGCTTCTGCGCATCCGCCAAACGGTCAACC CGGGCGGGTGGCGGCTTCGGCGCGGGCCCGGGCCGG
GCGGCTTCAGAGCGGCCAGACCATCGCGCTGCCTGCGCAGGGCCTCATCGAGTTCGCGACGCGCTGGC
GAAGCTCATAGACGACTACGGAGGCGAGGACGACGAGCTGGCAGGCGGCCGGGAGGCGGGCGCCGGGGC
CCAGGGGGCGGCTGTATGGAGAGCTCCCGAGGGCACCTCCATCACCGTGGACTCCAAGCGTTCTTCT
TCGATGTGGGCTGCAACAAATACGGGGTGTTCGCGAGTGAGCGAGGTGAAGCCGCTCCTACCGCAATGC
CATCACCGTACCCTTCAAAGCCTGGGGCAAGTTCGGAGGCGCCTTTTCCCGGTATGCGGATGAGATGAAA
GAAATCCAGGAACGACAGAGGGATAAGCTTTATGAGCGACGTGGTGGGGCAGCGCGGGCGGCGAAGAGT
CAGAGGGTGAGGAGGTGGATGAGGAT

ACGCGTACGCGGGCGCTCGAGCAGAAACTCATCTCAGAAGAGGATCTGGCAGCAAATGATATCCTGGATT
ACAAGGATGACGACGATAAGGTTTAA



[View online »](#)

Protein Sequence: >RC211001 representing NM_033224
Red=Cloning site Green=Tags(s)

MADGDSGSEGGGGGPCGFQPASRGGGEQETQELASKRLDIQNKRFYLDVKQNAKGRFLKIAEVGAGGSK
 SRLTLSMAVAAEFRDSLGDFFIEHYAQLGPSSPEQLAAGAEEGGPRRALKSEFLVRENKYYLDLKENQR
 GRFLRIRQTVNRGGGGFGAGPGPGLQSGQTIALPAQGLIEFRDALAKLIDDYGGEDDELAGPGGGAGG
 PGGGLYGELPEGTSITVDSKRFFFDVGCNKYGVFLRVSEVKPSYRNAITVPFKAWGKFGGAFCRYADEMK
 EIQRQRDKLYERRGGSGGGESEGEVDED

TRTRPLEQKLISEEDLAANDILDYKDDDDKV

Chromatograms: https://cdn.origene.com/chromatograms/mk8114_f06.zip

Restriction Sites: SgfI-MluI

Cloning Scheme:

Cloning sites used for ORF Shuttling:



ACCN: NM_033224

ORF Size: 936 bp

OTI Disclaimer: The molecular sequence of this clone aligns with the gene accession number as a point of reference only. However, individual transcript sequences of the same gene can differ through naturally occurring variations (e.g. polymorphisms), each with its own valid existence. This clone is substantially in agreement with the reference, but a complete review of all prevailing variants is recommended prior to use. [More info](#)

OTI Annotation: This clone was engineered to express the complete ORF with an expression tag. Expression varies depending on the nature of the gene.

Components: The ORF clone is ion-exchange column purified and shipped in a 2D barcoded Matrix tube containing 10ug of transfection-ready, dried plasmid DNA (reconstitute with 100 ul of water).

Reconstitution Method:

1. Centrifuge at 5,000xg for 5min.
2. Carefully open the tube and add 100ul of sterile water to dissolve the DNA.
3. Close the tube and incubate for 10 minutes at room temperature.
4. Briefly vortex the tube and then do a quick spin (less than 5000xg) to concentrate the liquid at the bottom.
5. Store the suspended plasmid at -20°C. The DNA is stable for at least one year from date of shipping when stored at -20°C.

RefSeq: [NM_033224.5](#)

RefSeq Size: 9074 bp

RefSeq ORF: 939 bp

Locus ID: 5814

UniProt ID: [Q96QR8](#)

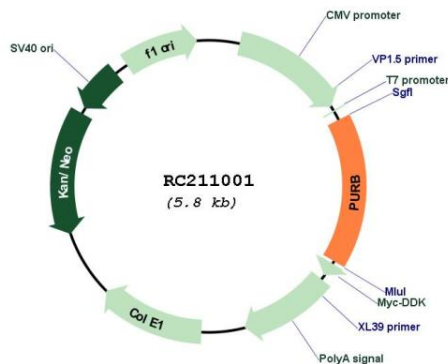
Cytogenetics: 7p13

Domains: PUR

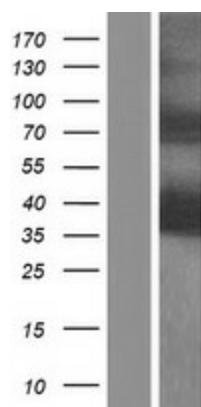
MW: 33.1 kDa

Gene Summary: This gene product is a sequence-specific, single-stranded DNA-binding protein. It binds preferentially to the single strand of the purine-rich element termed PUR, which is present at origins of replication and in gene flanking regions in a variety of eukaryotes from yeasts through humans. Thus, it is implicated in the control of both DNA replication and transcription. Deletion of this gene has been associated with myelodysplastic syndrome and acute myelogenous leukemia. [provided by RefSeq, Jul 2008]

Product images:



Circular map for RC211001



Western blot validation of overexpression lysate (Cat# [LY409642]) using anti-DDK antibody (Cat# [TA50011-100]). Left: Cell lysates from untransfected HEK293T cells; Right: Cell lysates from HEK293T cells transfected with RC211001 using transfection reagent MegaTran 2.0 (Cat# [TT210002]).