

## Product datasheet for RC210996

### TMEM30B (NM\_001017970) Human Tagged ORF Clone

#### Product data:

|                           |   |
|---------------------------|---|
| Product Type:             | Expression Plasmids   |
| Product Name:             | TMEM30B (NM_001017970) Human Tagged ORF Clone                     |
| Tag:                      | Myc-DDK   |
| Symbol:                   | TMEM30B   |
| Synonyms:                 | CDC50B  |
| Mammalian Cell Selection: | Neomycin  |
| Vector:                   | pCMV6-Entry (PS100001)  |
| E. coli Selection:        | Kanamycin (25 ug/mL)  |
| ORF Nucleotide Sequence:  | >RC210996 ORF sequence<br>Red=Cloning site Blue=ORF Green=Tags(s) |

TTTTGTAATACGACTCACTATAGGGCGGCCGGAATTCGTCGACTGGATCCGGTACCGAGGAGATCTGCC  
GCC**CGGATCGCC**

ATGACCTGGAGCGCCACGGCCCGGGCGCCACCAGCCGACAACACCGCCTTCACTCAGCAGCGCCTCC  
CCGCCTGGCAGCCGCTGCTGTCGCCAGCATCGCGCTGCCGCTTCTTCTGCGCGGGCCTGGCCTTCAT  
CGGCCTGGGCCTGGCCTCTACTACTCCTCAACGGCATCAAGGAGCTGGAGTACGACTATACAGGGCAG  
CCGGGCACCGGTAAGTCTGCTGGTGTGCGCCGGCTGGCCAGGGCCGGCGCTGCCGCCCCCTGCTCGT  
GCGCCTGGTACTTCTCGCTGCCGAGCTTCCAGGGCCAGTGTACCTCTACTACGAGCTGACCAACTT  
CTACCAGAAACCGGCGCTACGGCGTGTCCCGGACGACGCGCAGCTGAGCGGACTCCCCAGCGCGCTG  
CGCCACCTGTCAACGAGTGCGCCCTACCAGCGCAGCGCGCCGGCCTGCCATCGCGCCTGCGGCG  
CCATCGCCAACAGCCTCTTCAACGACTCCTTCTCGCTTTGGCACCAGCGCCAGCCCGCGGGCCCTACGT  
CGAGGTGCCGCTCGACCGCTCCGGCATCGCCTGGTGGACCGACTACCACGTCAAGTTCGCAACCCGCCG  
CTGGTCAACGGCAGCCTGGCGTTGGCCTTCCAGGGCACGGCGCCCGCCCAACTGGCGCCGGCCAGTCT  
ACGAGCTCAGCCCGACCCCAACAACACCGGCTTCATCAATCAGGACTTCGTGGTGTGGATGCGCACGGC  
GGCGCTGCCACGTTCCGCAACTGTACGCGCGCATCCGCCAGGGCAACTACTCGGCCGGCTGCCCGG  
GGCGCTACCGCGTCAACATCACCTACAACACTACCGGTGCGCGGTTCCGGCGCCACAAGCTCCTCATCT  
TCAGCAGCATCTCGTGGATGGTGGCAAGAACCCTTCTGGGCATCGCCTACCTGGTCTGTCGGCTCCCT  
CTGCATCCTACCGGCTTTGTCATGCTGGTCTACATTGCTACCGAGACCAGGACGACGACGACGAG  
GAG

**ACGCGT**ACGCGGCCGCTCGAGCAGAACTCATCTCAGAAGAGGATCTGGCAGCAATGATATCCTGGATT  
ACAAGGATGACGACGATAAGGTTAA



[View online »](#)

**Protein Sequence:** >RC210996 protein sequence  
Red=Cloning site Green=Tags(s)

MTWSATARGAHQPDNTAFTQQRPLPAWQPLL SASIALPLFFCAGLAF IGLGLGLYSSNGIKELEYDYTGDPGTGNCVCAAGQGRALPPPSCAWYFSLPELFQGPVYLYELTNFYQNNRRYGVSRDDAQLSGLPSALRHPVNECAPYQRSAAGLPIAPCGAIANSLFNDSFSLWHQRQPGGPYVEVPLDRSGIAWWTDYHVKFRNPLL VNGSLALAFQGTAPPPNWRPVEVLESPDPNNTGF INQDFVVMRTAALPTFRKLYARIRQGNYSAGLPRGAYRVNITYNYPVRAFGGHKLLIFSSISWMGGKNPFLGIAYLVVGS LCILTGFVMLVYIIRYQDQDDDEE

TRTRPLEQKLISEEDLAANDILDYKDDDDKV

**Chromatograms:** [https://cdn.origene.com/chromatograms/mk6008\\_e07.zip](https://cdn.origene.com/chromatograms/mk6008_e07.zip)

**Restriction Sites:** SgfI-MluI

**Cloning Scheme:**



\* The last codon before the Stop codon of the ORF

**ACCN:** NM\_001017970

**ORF Size:** 1053 bp

**OTI Disclaimer:** The molecular sequence of this clone aligns with the gene accession number as a point of reference only. However, individual transcript sequences of the same gene can differ through naturally occurring variations (e.g. polymorphisms), each with its own valid existence. This clone is substantially in agreement with the reference, but a complete review of all prevailing variants is recommended prior to use. [More info](#)

**OTI Annotation:** This clone was engineered to express the complete ORF with an expression tag. Expression varies depending on the nature of the gene.

**Components:** The ORF clone is ion-exchange column purified and shipped in a 2D barcoded Matrix tube containing 10ug of transfection-ready, dried plasmid DNA (reconstitute with 100 ul of water).

**Reconstitution Method:**

1. Centrifuge at 5,000xg for 5min.
2. Carefully open the tube and add 100ul of sterile water to dissolve the DNA.
3. Close the tube and incubate for 10 minutes at room temperature.
4. Briefly vortex the tube and then do a quick spin (less than 5000xg) to concentrate the liquid at the bottom.
5. Store the suspended plasmid at -20°C. The DNA is stable for at least one year from date of shipping when stored at -20°C.

**RefSeq:** [NM\\_001017970.3](#)

**RefSeq Size:** 4443 bp

**RefSeq ORF:** 1056 bp

**Locus ID:** 161291

**UniProt ID:** [Q3MIR4](#)

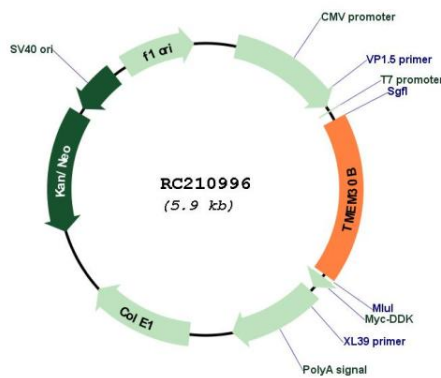
**Cytogenetics:** 14q23.1

**Protein Families:** Transmembrane

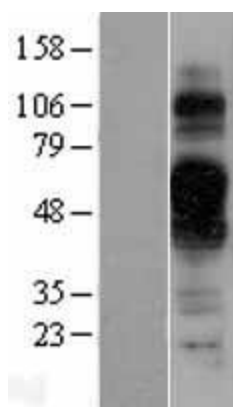
**MW:** 38.9 kDa

**Gene Summary:** Accessory component of a P4-ATPase flippase complex which catalyzes the hydrolysis of ATP coupled to the transport of aminophospholipids from the outer to the inner leaflet of various membranes and ensures the maintenance of asymmetric distribution of phospholipids. Phospholipid translocation seems also to be implicated in vesicle formation and in uptake of lipid signaling molecules. The beta subunit may assist in binding of the phospholipid substrate (Probable). Can mediate the export of alpha subunits ATP8A1, ATP8B1, ATP8B2 and ATP8B4 from the ER to the plasma membrane.[UniProtKB/Swiss-Prot Function]

### Product images:



Circular map for RC210996



Western blot validation of overexpression lysate (Cat# [LY400400]) using anti-DDK antibody (Cat# [TA50011-100]). Left: Cell lysates from untransfected HEK293T cells; Right: Cell lysates from HEK293T cells transfected with RC210996 using transfection reagent MegaTran 2.0 (Cat# [TT210002]).