

Product datasheet for **RC210995**

SIGLEC10 (NM_033130) Human Tagged ORF Clone

Product data:

Product Type:	Expression Plasmids
Product Name:	SIGLEC10 (NM_033130) Human Tagged ORF Clone
Tag:	Myc-DDK
Symbol:	SIGLEC10
Synonyms:	PRO940; SIGLEC-10; SLG2
Mammalian Cell Selection:	Neomycin
Vector:	pCMV6-Entry (PS100001)
E. coli Selection:	Kanamycin (25 ug/mL)



[View online »](#)

ORF Nucleotide
Sequence:

>RC210995 ORF sequence
Red=Cloning site Blue=ORF Green=Tags(s)

TTTTGTAATACGACTCACTATAGGGCGGCCGGAATTCGTCGACTGGATCCGGTACCGAGGAGATCTGCC
GCCGCGATCGCC

ATGCTACTGCCACTGCTGCTGTCTCGCTGCTGGGCGGGTCCCAGGCTATGGATGGGAGATTCTGGATAC
GAGTGCAGGAGTCAGTGATGGTGCCGGAGGGCCTGTGCATCTCTGTGCCCTGCTCTTTCTCTACCCCCG
ACAAGACTGGACAGGGTCTACCCAGCTTATGGCTACTGGTCAAAGCAGTGACTGAGACAACCAAGGGT
GCTCCTGTGGCCACAACCACCAGAGTCGAGAGGTGAAATGAGCACCCGGGGCCGATTCCAGCTCACTG
GGGATCCCGCCAAGGGAACTGCTCCTTGGTGATCAGAGACGCGCAGATGCAGGATGAGTCACAGTACTT
CTTTGGGTGGAGAGAGGAAGCTATGTGAGATATAATTTTCATGAACGATGGGTTCTTTCTAAAAGTAACA
GCCCTGACTCAGAAGCCTGATGTCTACATCCCCGAGACCCTGGAGCCCGGCAGCCGGTGACGGTCACT
GTGTGTTAACTGGCCCTTGGAGGAATGCCACCCCTTCTTTCTCTGGACGGGGCTGCCCTCTCCTC
CCAAGGAACCAACACGACCTCCACTTCTCAGTGCTCAGCTTACGCCAGACCCAGGACCACAAC
ACCGACCTCACCTGCCATGTGGACTTCTCCAGAAAGGGTGTGAGCGTACAGAGGACCGTCCGACTCCGTG
TGGCCTATGCCCCAGAGACCTTGTATCAGCATTTCACGTGACAACACGCCAGCCCTGGAGCCCCAGCC
CCAGGGAAATGTCCCATACCTGGAAGCCAAAAAGGCCAGTTCCTGCGGGTCTCTGTGCTGCTGACAGC
CAGCCCCCTGCCACTGAGCTGGGTCCTGCAGAACAGAGTCTCTCCTCGTCCCATCCCTGGGGCCCTA
GACCCCTGGGGCTGGAGCTGCCCGGGTGAAGGCTGGGGATTGAGGGCGTACACCTGCCAGCGGGAGAA
CAGGCTTGGTCCCAGCAGCGAGCCCTGGACCTCTGTGCAGTATCCTCCAGAGAACCTGAGAGTGATG
GTTTCCAAGCAAACAGGACAGTCTGGAAAACCTTGGGAACGGCAGTCTCTCCAGTACTGGAGGGCC
AAAGCCTGTGCCCTGGTCTGTGTACACACAGCAGCCCCCAGCCAGGCTGAGCTGGACCCAGAGGGGACA
GGTTCGAGCCCCCTCCAGCCCTCAGACCCCGGGTCTGGAGCTGCCTCGGGTTCAAGTGGAGCACGAA
GGAGAGTTCACCTGCCACGCTCGGCACCCACTGGGCTCCAGCACGTCTCTCAGCCTCTCCGTGCACT
ACTCCCCGAAGCTGCTGGGCCCTCTGCTCCTGGGAGGCTGAGGGTCTGCACTGCAGCTGCTCTCCCA
GGCCAGCCCGGCCCTCTGCGCTGGTGGCTTGGGAGGAGCTGCTGGAGGGAAACAGCAGCCAGGAC
TCCTTCGAGGTCACCCCAAGCTCAGCCGGGCCCTGGGCAACAGTCCCTGAGCCTCCATGGAGGGCTCA
GCTCCGGCTCAGGCTCCGCTGTGAGGCTGGAACGTCCATGGGGCCAGAGTGGATCCATCCTGCAGCT
GCCAGATAAGAAGGACTCATCTCAACGGCATTCTCAACGGAGCGTTTCTGGGAATCGGCATCACGGCT
CTTCTTTCTCTGCCTGGCCCTGATCATCATGAAGATTCTACCGAAGAGACGGACTCAGACAGAAACCC
CGAGGCCAGGTTCTCCCGGCACAGCAGATCCTGGATTACATCAATGTGGTCCCGACGGCTGGCCCTC
GGCTCAGAAGCGGAATCAGAAAGCCACACCAAACAGTCTCGGACCCCTTCCACCAGGTGCTCCCTCC
CCAGAATCAAAGAAGAACCAGAAAAAGCAGTATCAGTTGCCAGTTTCCAGAACCCAAATCATCCACTC
AAGCCCCAGAATCCCAGGAGAGCCAAGAGGAGCTCCATTATGCCACGCTCAACTCCCAGGGCTCAGACC
CAGGCTGAGGCCGGATGCCAAAGGGCACCCAGGCGGATTATGCAGAAGTCAAGTTCAA

ACGCGTACGCGGGCCGCTCGAGCAGAACTCATCTCAGAAGAGGATCTGGCAGCAATGATATCCTGGATT
ACAAGGATGACGACGATAAGGTTTAA

Protein Sequence: >RC210995 protein sequence
Red=Cloning site Green=Tags(s)

```

MLLPLLLSSLLGGSQAMDGRFWIRVQESVMVPEGLCISVPCSFYPRQDWTGSTPAYGYWFKAVTETTKG
APVATNHQSREVMSTRGRFQLTGDPAKGNCSLVIRDAQMQDESQYFFRVERGSYVRYNFMNDGFFLKVT
ALTQKPDVYIPETLEPGQPVTVICVFNWAFECEPPPSFSWTGAALSSQGTKPTTSHF SVLSFTPRPQDHN
TDLTCHVDFSRKGVSVQRTVRLRVAYAPRDLVISISRDNTPALEPQPQGNVPYLEAQKGQFLRLLCAADS
QPPATLSWVLQNRVLSSSHWPWGRPLGLELPGVKAGDSGRYTCRAENRLGSQQRALDLSVQYPPENLRVM
VSQANRTVLENLNGTSLPVLEGQSLCLVCVTHSSPPARLSWTQRGQVLSPSQPSDPGVLELPRVQVEHE
GEFTCHARHPLGSQHVSLSLVHYSPKLLGPSCSWEAEGLHCSCSSQASPAPSLRWLGEELLEGNSSQD
SFEVTPSSAGPWANSSLHGGGLSSGLRLRCEAWNVAHQSGSILQLPDKKGLISTAFSNGAFLGIGITA
LLFLCLALIIIMKILPKRRTQTETPRPRFSRHSTILDYINVVPTAGPLAQKRQKATPNSPRTPLPPGAPS
PESKKNQKQYQLPSFPEPKSSTQAPESQESQEELHYATLNFPGVRPRPEARMPKGTQADYAEVKFQ
    
```

TRTRPLEQKLISEEDLANDILDYKDDDDKV

Chromatograms: https://cdn.origene.com/chromatograms/mk6591_e05.zip

Restriction Sites: SgfI-MluI

Cloning Scheme:



ACCN: NM_033130

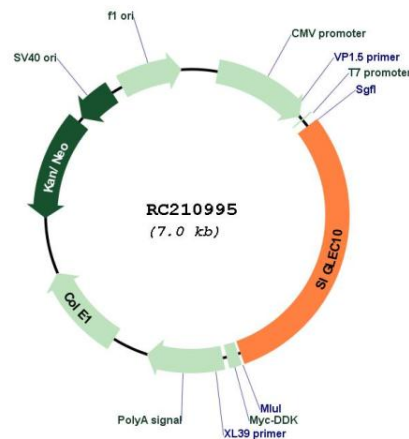
ORF Size: 2091 bp

OTI Disclaimer: The molecular sequence of this clone aligns with the gene accession number as a point of reference only. However, individual transcript sequences of the same gene can differ through naturally occurring variations (e.g. polymorphisms), each with its own valid existence. This clone is substantially in agreement with the reference, but a complete review of all prevailing variants is recommended prior to use. [More info](#)

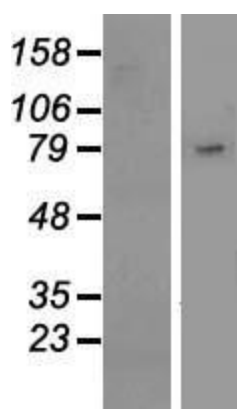
OTI Annotation: This clone was engineered to express the complete ORF with an expression tag. Expression varies depending on the nature of the gene.

Components:	The ORF clone is ion-exchange column purified and shipped in a 2D barcoded Matrix tube containing 10ug of transfection-ready, dried plasmid DNA (reconstitute with 100 ul of water).
Reconstitution Method:	<ol style="list-style-type: none"> 1. Centrifuge at 5,000xg for 5min. 2. Carefully open the tube and add 100ul of sterile water to dissolve the DNA. 3. Close the tube and incubate for 10 minutes at room temperature. 4. Briefly vortex the tube and then do a quick spin (less than 5000xg) to concentrate the liquid at the bottom. 5. Store the suspended plasmid at -20°C. The DNA is stable for at least one year from date of shipping when stored at -20°C.
RefSeq:	NM_033130.5
RefSeq Size:	3400 bp
RefSeq ORF:	2094 bp
Locus ID:	89790
UniProt ID:	Q96LC7
Cytogenetics:	19q13.41
Protein Families:	Druggable Genome, Transmembrane
MW:	76.6 kDa
Gene Summary:	SIGLECs are members of the immunoglobulin superfamily that are expressed on the cell surface. Most SIGLECs have 1 or more cytoplasmic immune receptor tyrosine-based inhibitory motifs, or ITIMs. SIGLECs are typically expressed on cells of the innate immune system, with the exception of the B-cell expressed SIGLEC6 (MIM 604405).[supplied by OMIM, Jul 2002]

Product images:



Circular map for RC210995



Western blot validation of overexpression lysate (Cat# [LY409681]) using anti-DDK antibody (Cat# [TA50011-100]). Left: Cell lysates from untransfected HEK293T cells; Right: Cell lysates from HEK293T cells transfected with RC210995 using transfection reagent MegaTran 2.0 (Cat# [TT210002]).