

## Product datasheet for **RC210994**

### HDX (NM\_144657) Human Tagged ORF Clone

#### Product data:

Product Type:	Expression Plasmids
Product Name:	HDX (NM_144657) Human Tagged ORF Clone
Tag:	Myc-DDK
Symbol:	HDX
Synonyms:	CXorf43; D030011N01Rik
Mammalian Cell Selection:	Neomycin
Vector:	pCMV6-Entry (PS100001)
E. coli Selection:	Kanamycin (25 ug/mL)



[View online »](#)

**ORF Nucleotide  
Sequence:**

>RC210994 ORF sequence  
 Red=Cloning site Blue=ORF Green=Tags(s)

TTTTGTAATACGACTCACTATAGGGCGGCCGGAATTCGTCGACTGGATCCGGTACCGAGGAGATCTGCC  
 GCC**CGCATCGCC**

ATGAATCTACGTTCTGTATTTACTGTAGAACAAACAAAGGATTTTACAGCGTTATTATGAAAATGGAATGA  
 CAAATCAAAGTAAAAATTGCTTTTCAGCTCATATTACAGTGTGCACAGGAGACTAAGCTGGACTTCAGTGT  
 AGTCAGGACGTGGGTTGGCAATAAGAGAAGAAAGATGAGTAGTAAGAAGCTCTGAATCTGGAACAGCAACA  
 ACAGGAACCTCTTTGTCAGCTCCAGACATCACAGTCAGAAATGTGGTTAATATTGCTCGACCCTCAAGCC  
 AGCAGTCTTCTGGACATCTGCCAATAATGATGTCATTGTAAGTGGTATATACAGTCCAGCCAGTTCATC  
 AAGTAGGCAAGGAACAAACAAACATACAGACACACAAATTACAGAAGCACATAAAATCCCTATTCAGAAA  
 ACAGCCACTAAAAATGATACTGAGTTTCAGTTACACATTCCTGTCCAAAGACAAGTAGCACACTGTAAAA  
 ATGCTTCCCTACTCCTAGGTGAAAAACAATTATTTGTCAAGACAGACAAGTGTCTAAATGCTGGAAA  
 CTCAGTATTCAATCACGCAAAGAAAAACTATGGAACTCTTCAGTACAAGCTTCTGAAATGACAGTACCT  
 CAAAAGCCTTCTGTGTGCCACCGACCTTGTAAAATTGAACCAGTTGGGATTCAAAGGTATATAAGCCTG  
 AACACACAGGCCAGCATTACATAAATTATGTGGGCAAAAAGCCAACCTATTAGAGACCCCTTACTGTAGAAC  
 ACAAACCTTGAAATCCGTGAAGTGTTCATTGGCAGTTAGCGATTACCCCCAGAGAATTCTGGGAGGA  
 AATGCCCCACAGAAGCCTAGCTCAGCAGAAGGAAATGTTTGTCCATTGCAATGGAGACTGGAGATGCTG  
 AGGATGAATATGCCAGAGAGGAAGAGCTGGCATCGATGAGAGCACAGATACCAAGCTATTCGAGATTTTA  
 TGAAAGTGGCAGTTCCCTTCGAGCTGAGAACAAAGTACAACCTTGCCCGGACCAGGAAGAAATATGCCA  
 AATTCACAAATGGTGAATATTAGAGATATGTCAGACAATGTACTGTATCAAAACAGAACTACCATTTGA  
 CACCACGGACCTCATTACATACAGCATCTAGTACAATGTACAGTAATACCAATCCATTACGGAGTAATTT  
 TTCTCCTCATTTTGCATCATCAAACCAATTGAGATTATCACAAAACCAAAACAATTACCAGATTTACGGA  
 AACCTTACTGTGCCTTGATTACAGGGTGTCTAGAAAAAGAGCACTACAGGACCGCACTCAGTTCAGTG  
 ACCGAGACTTAGCCACCCTTAAGAAGTATTGGGACAATGGCATGACCAGCCTGGGCTCTGTTTGTAGAGA  
 GAAAATTGAAGCTGTGGCAACTGAATTAATGTTGACTGTGAAATAGTTCGGACTTGATTGGGAATCGA  
 AGAAGGAAATATCGTTAATGGGATTGAAGTTCACCTCCAAGAGGAGGCCCTGCTGATTTCTCTGAGC  
 AGCCTGAGTCTGGTTCTTTATCTGCACTCACACCAGGAGAGGAAGCTGGGCTGAAGTAGGAGAGGATAA  
 TGACAGAAATGATGAAGTATCCATCTGTTGTCTGAAGGAAGCTCTCAAGAAGAGCCCAATGAAGTTGTT  
 CCGAATGATGCAAGGGCTCATAAGGAAGAGGACCACCATGCAGTAACCACAGATAATGTGAAAATAGAAA  
 TTATTGATGATGAAGAAAGTACATGATAAGTAATTCTGAAGTAGAACAAGTAAACTCTTTCTTGATTA  
 TAAGAATGAAGAAGTCAAATTCATTGAAAATGAGCTCGAGATTCAAAAGCAAAAATACTTTAAACTTCAG  
 ACTTTTGTAGAACTTGATATTAGCAATGAAAGCTGATGATAAGGAACAACAGCAGGCACTGCTGTGAG  
 ATTTACCTCCTGAATTAGAGGAAATGGATTTCAATCATGCCTCACTGGAGCCTGATGATACCTCATTGAG  
 TGTATCTTCTTTGTCAGAGAAAAATGTCTCAGAAAAGTTTG

**ACGCGT**ACGCGGCCGCTCGAGCAGAACTCATCTCAGAAGAGGATCTGGCAGCAATGATATCCTGGATT  
 ACAAGGATGACGACGATAAGGTTTAA

**Protein Sequence:** >RC210994 protein sequence  
Red=Cloning site Green=Tags(s)

MNLRVFTVEQQRILQRYYENGMTNQSKNCFQLILQCAQETKLDKFSVVRTWVGNKRRKMSKNSESAT  
 TGTSLSAPDITVRNVVNIARPSSQSSWTSANNDVIVTGIYSPASSSSRQGTNKHTDTQITEAHKIPIQK  
 TATKNDTEFLHIPVQRQVAHCKNASLLLGKTIILSRQTSVLNAGNSVFNHAKKNYGNSVQASEMTP  
 QKPSVCHRPCKIEPVGIQRSYKPEHTGPALHNLGGKPTIRDPYCRTQNLIREVFLAVSDYPQRILGG  
 NAPQKPSSAEGNCLSIAMETGDAEYAREEELASMQIPSYSRFYEGSSSLRAENQSTTLPGPGRNMP  
 NSQMVNIRDMSDNLVYQNRNYHLTPRTSLHTASSTMYSTNPLRSNFSHFASSNLRLSQNQNYQISG  
 NLTVPWITGCSRKRALQDRTPQSDRDLATLKKYWDNGMTSLGVSVCREKIEAVATELNVDCEIVRTWIGNR  
 RRYRLMGIEVPPRGGPADFSEQPEGSLSALTPGEEAGPEVGEDNDRNDEVSICLSEGSSQEEPNEVV  
 PNDARAHKEEDHVAVTTDNVIEIIDDEESDMISNSEVEQVNSFLDYKNEEVKFIENELEIQKQYFKLV  
 TFVRSLLAMKADDEKQQALLSDLPELEEMDFNHASLEPDDTSFSVSSLSEKNVSESL

TRTRPLEQKLISEEDLANDILDYKDDDDKV

**Chromatograms:** [https://cdn.origene.com/chromatograms/mk6371\\_h06.zip](https://cdn.origene.com/chromatograms/mk6371_h06.zip)

**Restriction Sites:** SgfI-MluI

**Cloning Scheme:**



**ACCN:** NM\_144657

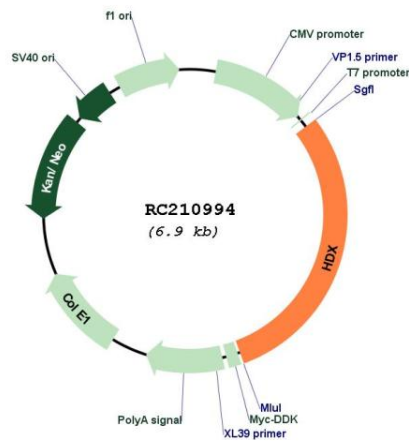
**ORF Size:** 2070 bp

**OTI Disclaimer:** The molecular sequence of this clone aligns with the gene accession number as a point of reference only. However, individual transcript sequences of the same gene can differ through naturally occurring variations (e.g. polymorphisms), each with its own valid existence. This clone is substantially in agreement with the reference, but a complete review of all prevailing variants is recommended prior to use. [More info](#)

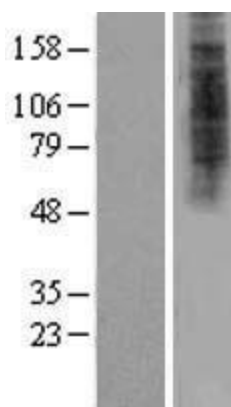
**OTI Annotation:** This clone was engineered to express the complete ORF with an expression tag. Expression varies depending on the nature of the gene.

<b>Components:</b>	The ORF clone is ion-exchange column purified and shipped in a 2D barcoded Matrix tube containing 10ug of transfection-ready, dried plasmid DNA (reconstitute with 100 ul of water).
<b>Reconstitution Method:</b>	<ol style="list-style-type: none"> <li>1. Centrifuge at 5,000xg for 5min.</li> <li>2. Carefully open the tube and add 100ul of sterile water to dissolve the DNA.</li> <li>3. Close the tube and incubate for 10 minutes at room temperature.</li> <li>4. Briefly vortex the tube and then do a quick spin (less than 5000xg) to concentrate the liquid at the bottom.</li> <li>5. Store the suspended plasmid at -20°C. The DNA is stable for at least one year from date of shipping when stored at -20°C.</li> </ol>
<b>RefSeq:</b>	<u><a href="#">NM_144657.5</a></u>
<b>RefSeq Size:</b>	6226 bp
<b>RefSeq ORF:</b>	2073 bp
<b>Locus ID:</b>	139324
<b>UniProt ID:</b>	<u><a href="#">Q7Z353</a></u>
<b>Cytogenetics:</b>	Xq21.1
<b>Protein Families:</b>	Transcription Factors
<b>MW:</b>	77.2 kDa

**Product images:**



Circular map for RC210994



Western blot validation of overexpression lysate (Cat# [LY408196]) using anti-DDK antibody (Cat# [TA50011-100]). Left: Cell lysates from untransfected HEK293T cells; Right: Cell lysates from HEK293T cells transfected with RC210994 using transfection reagent MegaTran 2.0 (Cat# [TT210002]).