

Product datasheet for **RC210992**

TEC (NM_003215) Human Tagged ORF Clone

Product data:

Product Type:	Expression Plasmids
Product Name:	TEC (NM_003215) Human Tagged ORF Clone
Tag:	Myc-DDK
Symbol:	TEC
Synonyms:	PSCTK4
Mammalian Cell Selection:	Neomycin
Vector:	pCMV6-Entry (PS100001)
E. coli Selection:	Kanamycin (25 ug/mL)



[View online »](#)

**ORF Nucleotide
Sequence:**

>RC210992 ORF sequence
 Red=Cloning site Blue=ORF Green=Tags(s)

TTTTGTAATACGACTCACTATAGGGCGGCCGGGAATTCGTGACTGGATCCGGTACCGAGGAGATCTGCC
 GCC**GCGATCGCC**

ATGAATTTTAACTACTATTTGGAGGAGATTCTTATTTAAAAGGTCACAGCAGAAAAAGAAGACATCGCCCT
 TAAACTACAAAGAGAGACTTTTTGTACTTACAAAGTCCATGCTAACCTACTATGAGGGTCGAGCAGAGAA
 GAAATACAGAAAGGGTTTATTGATGTTTCAAAAATCAAGTGTGTGAAAATAGTGAAGAATGATGATGGT
 GTCATTCCCTGTCAAAAATAGTATCCATTTTCAGGTTGTTTCATGATGCTAACACACTTTACATTTTTGCAC
 CTAGTCCACAAAGCAGGGACCTGTGGGTGAAGAAGTTAAAAGAAGAAATAAAGAACAACAATAATATTAT
 GATTAATATCATCCTAAATCTGGACAGATGGAAGTTATCAGTGTGTAGACAAACTGAAAAATTAGCA
 CCCGGATGTGAAAATACAATCTTTTTGAGAGCAGTATAAGAAAAGCACTACCTCCAGCACCAGAAACAA
 AGAAGCGAAGGCCTCCCCACCAATCCACTAGAAGAAGAAGATAATAGTGAAGAATCGTTGTAGCCAT
 GTATGATTTCCAAGCAGCAGAAGGACATGATCTCAGATTAGAGAGAGGCCAAGAGTATCTCATTTTTAGAA
 AAGAATGATGTTCAATGGTGGAGAGCAAGAGATAAATATGGGAATGAAGGATATATCCCAAGTAATTACG
 TAACGGGAAAGAAATCAACAACCTTAGATCAATATGAATGGTATTGCAGAAATATGAATAGAAGCAAGGC
 AGAGCAACTCCTCCGAGTGAAGATAAAGAAGGTGGTTTTATGGTAAGGGATTCCAGTCAACCAGGCTTG
 TACACAGTCTCCCTTTATACCAAGTTTGGAGGAGAAGGTTTCATCGGGTTTTAGGCATTATCATATAAAGG
 AAACAACAACATCTCAAAGAAGTATTACCTAGCTGAAAAACATGCTTTTTGGCTCCATTCCTGAGATTAT
 TGAATATCATAAGCACAATGCAGCAGGACTTGTACCAGGCTTCGGTACCCAGTTAGTGTGAAAGGGAAG
 AATGCACCCACCACTGCAGGATTCAGCTATGAGAAATGGGAGATTAACCCCTCAGAACTGACCTTTATGA
 GGGAATTGGGAAGTGGACTGTTTGGAGTGGTGGGCTTGGCAAAATGGCGAGCCCACTACAAGTCGCAAT
 CAAAGCTATTCGGGAAGGTGCAATGTGCGAGGAGGACTTTATAGAAGAAGCTAAAGTGTGATGAAACTG
 ACACACCCGAAGTTAGTGCAGCTTTATGGTGTGTGCACCCAGCAGAAACCAATATACATTGTTACTGAGT
 TCATGGAAGGGGCTGCCTTCTGAATTTCTCCGACAGAGACAAGGTCATTTTCAGTAGAGACGACTGCT
 GAGCATGTGTGAGGATGTGTGTAAGGGATGGAGTATCTGGAGAGAAACAGCTTCATCCACAGAGATCTG
 GCTGCCAGAAATGTCTAGTAAGTGAAGGGAGTTGTAAAAGTATCTGATTTTGGAAATGGCCAGGTATG
 TTCTGGATGATCAGTACACAAGTCTTCTGGTCTAAGTTTCTGTGAAGTGGTGTCCACCTGAAGTGT
 TAATTACAGCCGCTTCAGCAGCAATCAGATGTCTGGTCAATTTGGTGTTTAATGTGGGAAGTATTCAGC
 GAAGGCAGAATGCCTTTTAAAAATACACCAATTATGAAGTGGTAACCATGGTACTCGAGGCCACCGAC
 TCTACCAGCCGAAGTTGGCGTCCAATATGTGTATGAGGTGATGCTGAGATGTTGGCAGGAGAAACAGAA
 GGAAGGCCTTCTTTCGAAGATCTGCTGCGCACAATAGATGAACTAGTTGAATGTGAAGAACTTTTGGAA
 AGA

ACGCGTACGCGGCCGCTCGAGCAGAAACTCATCTCAGAAGAGGATCTGGCAGCAATGATATCCTGGATT
 ACAAGGATGACGACGATAAGGTTTAA

Protein Sequence: >RC210992 protein sequence
 Red=Cloning site Green=Tags(s)

MNFNTILEEILIKRSQQKKKTSPLNYKERL FVLTKSMLTYEYGRAEKYRKGFDIVSKIKCIVEIVKNDG
 VIPCQNKYPFQVVDANTLYIFAPSPQSRDLWVKLKEEIKNNNNIMIKYHPKFWDGYSYQCCRQTEKLA
 PGCEKYNLFESSIRKALPPAPETKKRRPPPIPLEEEDNSEEIVVAMYDFQAAEGHDLRLERGQEYLILE
 KNDVHWRARDKYGNEGYIPSNVYTGKSNLDDQYEWYCRNMNRSKAEQLLRSEDKEGGFMVRDSSQPGL
 YTVSLYTKFSGEGSSGFRHYHIKETTTPKKYLAEKHAFGSIPETIEYHKHNAAGLVTRLRYPVSVKGG
 NAPTTAGFSYEKWEINPSELTFMRELGSLFGVVRLGKWRAQYKVAIKAIREGAMCEEDFIEEKVMMKL
 THPKLVQLYGVCTQQKPIYIVTEFMERGCLLNFLRQRQGHF SRDVLLSMCQDVCEGMEYLERNSFIHRDL
 AARNCLVSEAGVVKVSDFGMARYVLDQYTSSSGAKFPVKWCPPEVFNYSRFSKSDVWSFGVLMWEVFT
 EGRMPFEKYTNVEVVTMVRGHRLYQPKLASNYVVEVMLRCWQEKPEGRPSFEDLLRTIDELVECEETFG
 R

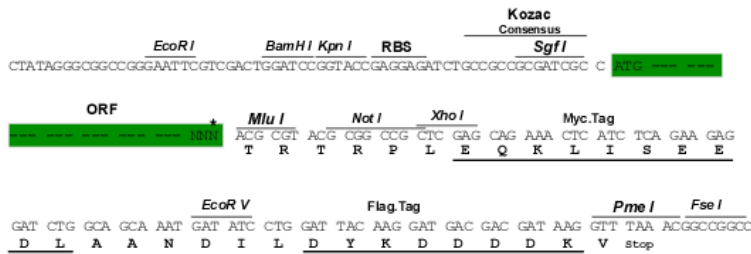
TRTRPLEQKLISEEDLAANDILDYKDDDDKV

Chromatograms: https://cdn.origene.com/chromatograms/mk6232_h06.zip

Restriction Sites: SgfI-MluI

Cloning Scheme:

Cloning sites used for ORF Shuttling:



* The last codon before the Stop codon of the ORF

ACCN: NM_003215

ORF Size: 1893 bp

OTI Disclaimer: Due to the inherent nature of this plasmid, standard methods to replicate additional amounts of DNA in E. coli are highly likely to result in mutations and/or rearrangements. Therefore, OriGene does not guarantee the capability to replicate this plasmid DNA. Additional amounts of DNA can be purchased from OriGene with batch-specific, full-sequence verification at a reduced cost. Please contact our customer care team at custsupport@origene.com or by calling 301.340.3188 option 3 for pricing and delivery.

The molecular sequence of this clone aligns with the gene accession number as a point of reference only. However, individual transcript sequences of the same gene can differ through naturally occurring variations (e.g. polymorphisms), each with its own valid existence. This clone is substantially in agreement with the reference, but a complete review of all prevailing variants is recommended prior to use. [More info](#)

OTI Annotation: This clone was engineered to express the complete ORF with an expression tag. Expression varies depending on the nature of the gene.

Components: The ORF clone is ion-exchange column purified and shipped in a 2D barcoded Matrix tube containing 10ug of transfection-ready, dried plasmid DNA (reconstitute with 100 ul of water).

Reconstitution Method:

1. Centrifuge at 5,000xg for 5min.
2. Carefully open the tube and add 100ul of sterile water to dissolve the DNA.
3. Close the tube and incubate for 10 minutes at room temperature.
4. Briefly vortex the tube and then do a quick spin (less than 5000xg) to concentrate the liquid at the bottom.
5. Store the suspended plasmid at -20°C. The DNA is stable for at least one year from date of shipping when stored at -20°C.

Note: Plasmids are not sterile. For experiments where strict sterility is required, filtration with 0.22um filter is required.

RefSeq: [NM_003215.3](#)

RefSeq Size: 3620 bp

RefSeq ORF: 1896 bp

Locus ID: 7006

UniProt ID: [P42680](#)

Cytogenetics: 4p12-p11

Domains: pkinase, SH2, TyrKc, SH3, BTK, PH, S_TKc

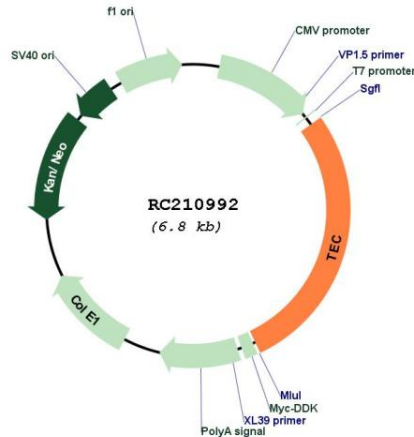
Protein Families: Druggable Genome, Protein Kinase

Protein Pathways: T cell receptor signaling pathway

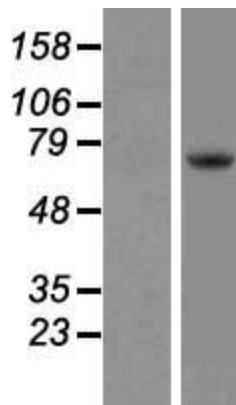
MW: 73.6 kDa

Gene Summary:

The protein encoded by this gene belongs to the Tec family of non-receptor protein-tyrosine kinases containing a pleckstrin homology domain. Tec family kinases are involved in the intracellular signaling mechanisms of cytokine receptors, lymphocyte surface antigens, heterotrimeric G-protein coupled receptors, and integrin molecules. They are also key players in the regulation of the immune functions. Tec kinase is an integral component of T cell signaling and has a distinct role in T cell activation. This gene may be associated with myelodysplastic syndrome. [provided by RefSeq, Jul 2008]

Product images:


Circular map for RC210992



Western blot validation of overexpression lysate (Cat# [LY418830]) using anti-DDK antibody (Cat# [TA50011-100]). Left: Cell lysates from untransfected HEK293T cells; Right: Cell lysates from HEK293T cells transfected with RC210992 using transfection reagent MegaTran 2.0 (Cat# [TT210002]).