

Product datasheet for RC210990

Attractin (ATRN) (NM_139322) Human Tagged ORF Clone

Product data:

Product Type:	Expression Plasmids
Product Name:	Attractin (ATRN) (NM_139322) Human Tagged ORF Clone
Tag:	Myc-DDK
Symbol:	Attractin
Synonyms:	DPPT-L; MGCA
Mammalian Cell Selection:	Neomycin
Vector:	pCMV6-Entry (PS100001)
E. coli Selection:	Kanamycin (25 ug/mL)
ORF Nucleotide Sequence:	>RC210990 ORF sequence Red=Cloning site Blue=ORF Green=Tags(s)

TTTTGTAATACGACTCACTATAGGGCGGCCGGGAATTCGTCGACTGGATCCGGTACCGAGGAGATCTGCC
GCC**CGATCGCC**

ATGGTGGCTGCAGCGCGGCAACTGAGGCAAGGCTGAGGAGGAGGACGGCGGCGACGGCAGCGCTCGCGG
GCAGGAGCGGGCCGCACTGGGACTGGGACGTGACCAGGGCTGGGAGGCGGGGCTGGGGCCGGGCT
GCGCTCCCGGGCTGCTGTCTCCACCGCTGCGGCCACGGCTGCTGCTGCTGTTGTTGCTCTCGCCG
CCGCTGCTGCTGCTGCTGCCCTGTGAGGCCGAGGCCCGCGGGCGGGCGGGTGTGGGCTCAG
CCGCAGCCGAGGCCAAGGAATGTGACCGGCCCTGTGTCAACGGCGTTCGTCGCAACCCTGGCACCAGCCA
GTGCGTCTGCCCCGCGGCTGGGTGGGCGAGCAATGCCAGCACTGCGGGGCGGCTTCAGACTAACTGGA
TCTTCTGGGTTTGTGACAGATGGACCTGAAAATTATAAATACAAAACGAAGTGCACGTGGCTCATTGAAG
GACAGCCAAATAGAATAATGAGACTTCGTTTCAATCATTTTGTACAGAGTGTAGTTGGGACCATTATA
TGTTTATGATGGGGACTCAATTTATGCACCGCTAGTTGCTGCATTTAGTGGCCTCATTGTTCTGAGAGA
GATGGCAATGAGACTGTCCTGAGGTTGTTGCCACATCAGGTTATGCCTTGTGCATTTTTTTAGTGATG
CTGCTTATAATTTGACTGGATTTAATATTACTTACAGTTTTGATATGTGTCCAAATAACTGCTCAGGCCG
AGGAGAGTGTAAAGATCAGTAATAGCAGCGATACTGTTGAATGTGAATGTTCTGAAAACGGAAAGGTGAA
GCATGTGACATTCCTCACTGTACAGACAACCTGTGGTTTTTCTCATCGAGGCATCGCAATCAAGTGATG
TCAGAGGATGCTCCTGCTTCTCAGACTGGCAGGGTCTGGATGTTCAAGTTCCTGTACCAGCTAACCAGTC
ATTTTGGACTCGAGAGGAATATTCTAACTTAAAGCTCCCCAGAGCATCTCATAAAGCTGTGGTCAATGGA
AACATTATGTGGGTTGTTGGAGGATATATGTTCAACCACTCAGATTATAACATGTTTCTAGCGTATGACC
TTGCTTCTAGGGAGTGGCTTCCACTAAACCGTTCTGTGAACAATGTGGTTGTTAGATATGGTCATTTCTT
GGCATTATACAAGGATAAAAATTTACATGTATGGAGGAAAAATGATTCAACTGGGAATGTGACCAATGAG
TTGAGAGTTTTTACATTCATAATGAGTCATGGGTGTTGTTGACCCCTAAGGCAAAGGAGCAGTATGCAG
TGGTTGGCACTCTGCACACATTGTTACTGAAGAATGGCCGAGTGGTCATGCTGGTCATCTTTGGTCA
CTGCCCTCTATGGATATATAAGCAATGTGCAGGAATATGATTTGGATAAGAACACATGGAGTATATTA



[View online »](#)

CACACCCAGGGTGCCCTTGTGCAAGGGGTTACGGCCATAGCAGTGTTTACGACCATAGGACCAGGGCCC
TATACGTTTCATGGTGGCTACAAGGCTTTCAGTGCCAATAAGTACCGGCTTGCAGATGATCTCTACCGATA
TGATGTGGATACCCAGATGTGGACCATTCTTAAGGACAGCCGATTTTTCCGTTACTTGCACACAGCTGTG
ATAGTGAGTGGAAACCATGCTGGTGTGGAGGAAACACACAATGACACATCTATGAGCCATGGCGCCA
AATGCTTCTCTCAGATTTTCATGGCCTATGACATTGCCTGTGACCCTGGTCAGTGCTTCCCAGACCTGA
TCTCCACCATGATGTCAACAGATTTGGCCATTGACAGCTTACACAACAGCACCATGTATGTGTTCCGGT
GGTTTCAATAGTCTCCTCCTCAGCGACATCCTGGTATTACCTCGGAACAGTGTGATGCGCATCGGAGTG
AAGCCGCTTGTAGCAGCAGGACCTGGTATTCCGGTGTGTGGAACACAGGGTCGTCTCAGTGTATCTC
GTGGGCGCTGGCAACTGATGAACAAGAAGAAAAGTAAAAATCAGAATGTTTTTCCAAAAGAACTCTTGAC
CATGACAGATGTGACCAGCACACAGATTGTACAGCTGCACAGCCAACACCAATGACTGCCACTGGTGCA
ATGACCATTGTGTCAGGAAACACAGCTGCTCAGAAGGCCAGATCTCCATTTTTAGGTATGAGAATTG
CCCCAAGGATAACCCCATGTACTACTGTAAACAAGAAGACCAGCTGCAGGAGCTGTGCCCTGGACCAGAAC
TGCCAGTGGGAGCCCGAATCAGGAGTGCATTGCCCTGCCGAAAATATCTGTGGCATTGGCTGGCATT
TGGTTGAAAACATGTTTAAAAATTACTACTGCCAAGGAGAATTATGACAATGTAAATGTTCTGTAG
GAACCACAATGCCCTTTGGCTTCTTACAACCCAGAAGAAGGTAGAATTTGCTTAAAGCAGCTGCCA
ATAATGCAGTCACTCAGAGCATGTCCAAGCTCACCTTAACCCCATGGGTGCGCCTTCGGAAGATCAATG
TGTCTACTGGTCTGGGAAGATATGTCCCATTTACAAATAGTTTACTACAGTGGATGCCGTCTGAGCC
CAGTGATGCTGGATTCTGTGAAATTTATCAGAACCAGTACTCGGGGACTGAAGGCTGCAACCTGCATC
AACCCACTCAATGGTAGTGTCTGTGAAAGGCTGCAAACCACAGTGTAAAGCAGTGCCGGACACCATGTG
CCTTGAGGACAGCATGTGGAGATTGACCAGCGGCAGCTCTGAGTGCATGTGGTGCAGCAACATGAAGCA
GTGTGTGGACTCCAATGCCTATGTGGCTCCTTCCCTTTGGCCAGTGTATGGAATGGTATACGATGAGC
ACCTGCCCCCTGAAAATTGTTCAAGCTACTGTACCTGTAGTATTGCTTGGAGCAACCAGGCTGTGGCT
GGTGTACTGATCCCAGCAATACTGGCAAAGGAAATGCATAGAGGGTTCCTATAAAGGACCAGTGAAGAT
GCCTTCGCAAGCCCTACAGGAAATTTCTATCCACAGCCCTGCTCAATTCAGCATGTGTCTAGAGGAC
AGCAGATACAACCTGGTCTTTCATTCAGTGTCCAGCTTGCCAATGCAACGGCCACAGTAAATGCATCAATC
AGAGCATCTGTGAGAAGTGTGAGAACCTGACCACAGGCAAGCACTGCGAGACCTGCATATCTGGCTTCTA
CGGTGATCCCACCAATGGAGGAAATGTCAGCCATGCAAGTGCAATGGGCACGCGTCTCTGTGCAACACC
AACACGGGCAAGTGTCTGCACCACCAAGGGCGTCAAGGGGACGAGTGCCAGCTATGTGAGGTAGAAA
ATCGATACCAAGGAAACCCTCTCAGAGGAACATGTTATTACTCTTCTTATTGACTATCAGTTCACCTT
TAGTCTATCCCAGGAAGATGATCGCTATTACACAGCTATCAATTTTGTGGCTACTCCTGACGAACAAAAC
AGGGATTTGGACATGTTCAATGCCTCCAAGAATTTCAACCTCAACATCACCTGGGCTGCCAGTTTCT
CAGCTGGAACCCAGGCTGGAGAAGAGATGCCTGTTGTTTCAAAAACCAACATTAAGGAGTACAAAGATAG
TTTCTTAATGAGAAGTTTGATTTTCGCAACCACCCAAATATCACTTTCTTTGTTTATGTCAGTAATTTT
ACCTGGCCCATCAAAATTCAGGTGCAAACCTGAACAA

AGCGGACCGACGCGTACGCGGCCGCTCGAGCAGAACTCATCTCAGAAGAGGATCTGGCAGCAAATGATATCC
TGGATTACAAGGATGACGACGATAAGGTTTAA

Protein Sequence: >RC210990 protein sequence
 Red=Cloning site Green=Tags(s)

```

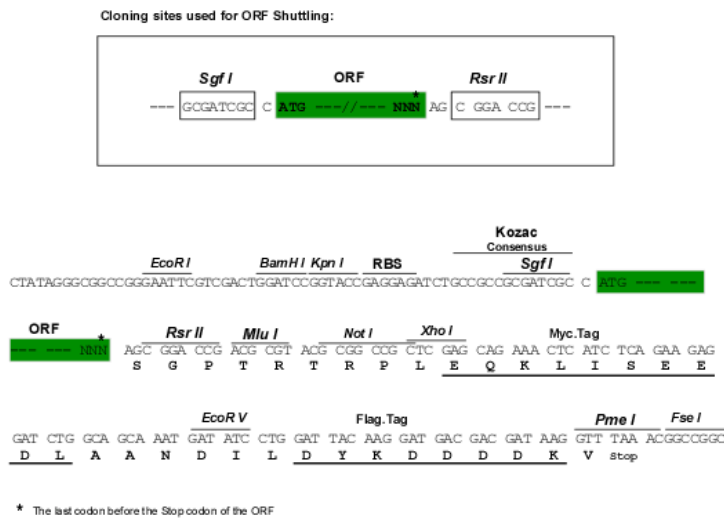
MVA AAAA TEARLRRTAATAALAGRSGGPHWDWDVTRAGRPLGAGLRPLRLLSPPLRPRLLLLLLLLLSP
PLLLLLLPCEAEAAAAAAVSGSAAAEAKECDRPCVNGGRCNPGTGQCVCAPAGWVGEQCQHCGRFRLTG
SSGFVTDGPGNYKYKTKCTWLIEGQPNRIMRLRFNFHATECSWDHLYVYDGD SIYAPLVAAFSGLIVPER
DGNETVPEVVATSGYALLHFFSDAAYNL TGFNITYSFDMCPPNCSGRGECKI SNSSDTVECECSEWNKGE
ACDIPHCTDNCGFPHRGICNSSDVRGCSFSDWQPGCSVPVPANQSFWTREEYSNLKLP RASHKAVVNG
NIMVWVGGMFNHSDYNMVLAYDLASREWLP LNRSVNNVVVRYGHSLALYKDKIYMYGGKIDSTGNVTNE
LRVFHIIHNESWLLTPKAKEQYAVVGHSAHIVTLKNGRVMLVIFGHCPLYGYISNVQEYDLDKNTWSIL
HTQ GALVQGGYGHSSVYDHRTRALYVHGGYKAFSANKYRLADDL YRYD VDTQMWTILKDSRFFRYLHTAV
IVSGTMLVFGGNTHNDTSM SHGAKCFSSDFMAYDIACDRWSVLPRPDLHHDVNRFGHSAVLHNSTMYVFG
GFNSLLSDILVFTSEQDAHRSEAACLAAGPGIRC V WNTGSSQCI SWALATDEQEELKSECF SKRTL D
HDCRDQHTDCYSTANTNDCHWCNDHC VPRNHSCSEGQISIFRYENC PKDNPMYYCNKKTSCRSCALDQN
CQWEPRNQECIALPENICGI GWHLVGN SCLKIT TAKENYDNAKLF CRNHNALLASLTTQKKVEFVLKQLR
IMQSSQSMSKLTLPWVGLRKINVS YWCWEDMSPFTNSLLQWMPSEPSDAGFCGILSEPSTRGLKAATCI
NPLNGSV CERPANHSAKQCRTPCALRTACGDCTSGSSECMWCSNMKQCVDSNAYVASFPFGQCM EWY TMS
TCPPE NSGYCTCSHCLEQPGCWCTDPSNTGKGKCI EGSYKGPVKMPSQAPTGNFYQP L LNSSM CLED
SRYNWSFIHCPACQCNGH SKCINQSICEK CENL TTGKH CETCISGFYGDPTNGGKCQPC KNGHASL CNT
NTGKCFCTTKGVKGDEQC LCEVENRYQGNPLRGT CYTLLIDYQFTFSLSQEDDRYYTA INFVATPDEQN
RDLDMFINASKNFNLNITWAASF SAGTQAGEEMPVVSKTNIKEYKDSFSNEKFD FRNHPNITFFVYVSNF
TWP I KIQVQTEQ
  
```

SGP TRTRPLEQKLI SEEDLAANDILDYKDDDDKV

Chromatograms: https://cdn.origene.com/chromatograms/mk6795_a02.zip

Restriction Sites: Sgfl-RsrII

Cloning Scheme:

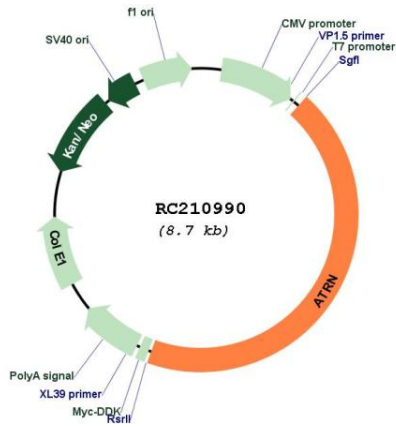


ACCN: NM_139322

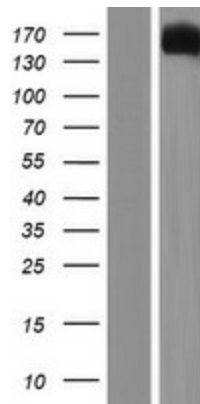
ORF Size: 3816 bp

OTI Disclaimer:	The molecular sequence of this clone aligns with the gene accession number as a point of reference only. However, individual transcript sequences of the same gene can differ through naturally occurring variations (e.g. polymorphisms), each with its own valid existence. This clone is substantially in agreement with the reference, but a complete review of all prevailing variants is recommended prior to use. More info
OTI Annotation:	This clone was engineered to express the complete ORF with an expression tag. Expression varies depending on the nature of the gene.
Components:	The ORF clone is ion-exchange column purified and shipped in a 2D barcoded Matrix tube containing 10ug of transfection-ready, dried plasmid DNA (reconstitute with 100 ul of water).
Reconstitution Method:	<ol style="list-style-type: none">1. Centrifuge at 5,000xg for 5min.2. Carefully open the tube and add 100ul of sterile water to dissolve the DNA.3. Close the tube and incubate for 10 minutes at room temperature.4. Briefly vortex the tube and then do a quick spin (less than 5000xg) to concentrate the liquid at the bottom.5. Store the suspended plasmid at -20°C. The DNA is stable for at least one year from date of shipping when stored at -20°C.
RefSeq:	NM_139322.4
RefSeq Size:	3967 bp
RefSeq ORF:	3819 bp
Locus ID:	8455
UniProt ID:	O75882
Cytogenetics:	20p13
Domains:	CUB, CLECT, EGF_Lam, PSI, PSI, EGF, Kelch
Protein Families:	Druggable Genome, Secreted Protein, Transmembrane
MW:	141.4 kDa
Gene Summary:	This gene encodes both membrane-bound and secreted protein isoforms. A membrane-bound isoform exhibits sequence similarity with the mouse mahogany protein, a receptor involved in controlling obesity. A secreted isoform is involved in the initial immune cell clustering during inflammatory responses that may regulate the chemotactic activity of chemokines. [provided by RefSeq, Apr 2016]

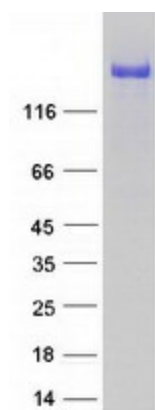
Product images:



Circular map for RC210990



Western blot validation of overexpression lysate (Cat# [LY408313]) using anti-DDK antibody (Cat# [TA50011-100]). Left: Cell lysates from untransfected HEK293T cells; Right: Cell lysates from HEK293T cells transfected with RC210990 using transfection reagent MegaTran 2.0 (Cat# [TT210002]).



Coomassie blue staining of purified ATRN protein (Cat# [TP310990]). The protein was produced from HEK293T cells transfected with ATRN cDNA clone (Cat# RC210990) using MegaTran 2.0 (Cat# [TT210002]).