

Product datasheet for **RC210988**

PARP15 (NM_152615) Human Tagged ORF Clone

Product data:

Product Type:	Expression Plasmids
Product Name:	PARP15 (NM_152615) Human Tagged ORF Clone
Tag:	Myc-DDK
Symbol:	PARP15
Synonyms:	ARTD7; BAL3; pART7
Mammalian Cell Selection:	Neomycin
Vector:	pCMV6-Entry (PS100001)
E. coli Selection:	Kanamycin (25 ug/mL)



[View online »](#)

ORF Nucleotide Sequence:

>RC210988 ORF sequence
 Red=Cloning site Blue=ORF Green=Tags(s)

TTTTGTAATACGACTCACTATAGGGCGGCCGGAATTCGTCGACTGGATCCGGTACCGAGGAGATCTGCC
 GCC**CGCATCGCC**

ATGCTCCAAGAATTGGATTAATATTTTTACACAATATTGTTGTAGTCAGTAAGTGTCTATTCCAGG
 CTTTTTATAGTAATCACTAAGTCAAGAATAAATCCCAACAAGCCAGGATCCCATGGCAGGAGA
 TACCAAGGTGTGGTGGGACTGTCTAAGCCTTGTTTACAGCATATGAAATGAAATCGGTGCAATT
 ACTTTTCAGTTGCTACTGGAGATATAGCCACTGAACAGGTAGATGTTATTGTAACTCAACAGCAAGGA
 CTTTAAATCGGAAATCAGGTGTGTCAAGAGCTATTTAGAAAGGTGCTGGACAAGCTGTGGAAAGTGAATG
 TGCTGTACTAGCTGCACAGCCTCACAGAGATTTATAATTACACCAGGTGGATGCTTAAAGTGCAAAATA
 ATAATTCAATGTTCTGGGGAAAAGATGTCAGGAAAACGGTCACCAGTGTCTAGAAGAGTGTGAACAGA
 GGAAGTACACATCGGTTCCCTCCAGCCATTGGAACAGGAAATGCCGAAAAAACCTATCACAGTTGC
 TGATAACATAATCGATGCTATTGTAGACTTCTCATCAACAATCCACCCATCATTAAAAACAGTTAAA
 GTTGTCATTTTTCAACCTGAGCTGCTAAATATATTCTACGACAGCATGAAAAAAGAGACCTCTCTGCAT
 CACTGAACTTTCAGTCCACATTCTCATGACTACATGTAATCTTCTGAACACTGGACTGACATGAATCA
 TCAGCTGTTTTGCATGGTCCAGCTAGAGCCAGGACAATCAGAATAAATACCATAAAGGACAAGTTCACC
 CGAACTGTTCTTCTACGCAATAGAGAAGATTGAGAGGATACAGAATGCATTTCTCTGGCAGAGCTACC
 AGGTAAGAAAAGGCAATGGATATCAAGAATGACCATAAGAATAATGAGAGACTCCTCTCCATGGGAC
 AGATGCAGACTCAGTGCCATATGTCAATCAGCAGGCTTAATAGAAGTTGTGCTGGGAAAAATGCTGTA
 TCCTATGGAAAAGAACCTATTTGCTGTGGATGCCAGTTATTCTGCCAAGGACACCTACTCCAAGCCAG
 ACAGCAATGGGAGAAAGCACATGACTGTGCGAGTACTTACTGGAGTCTTACAAAAGGGACGTGCAGG
 ATTAGTACCCCTCCACCAAGAATCCTCACAAATCCACAGATCTTTTGACTCAGTGACAAACAATACA
 CGATCTCAAAGCTATTTGGTATTCTTTGATAATCAGGCTTACCCAGAATATCTCATAACTTTCAGG
 CT

ACGCGTACGCGGCCGCTCGAGCAGAACTCATCTCAGAAGAGGATCTGGCAGCAATGATATCCTGGATT
 ACAAGGATGACGACGATAAGGTTTAA

Protein Sequence:

>RC210988 protein sequence
 Red=Cloning site Green=Tags(s)

MLQRIGLIFLHNIIVVSNCFYFQAFLEFTNWSRINPNKARIPMAGDTQGVVGTVSKPCFTAYEMKIGAI
 TFQVATGDIATEQVDVINSTARTFNKSGVSRILEGAGQAVESECAVLAAQPHRDFIITPGGCLKCKI
 I IHVPGGKDVRKTVTSVLEECEQRKYTSVSLPAIGTGNAGKNPITVADNIIDAIIVDFSSQHSTPSLKTVK
 VVIFQPELLNIFYDSMKKRDLSASLNFQSTFSMTTCNLPEHWTDNMHQLFCMVQLEPGQSEYNTIKDKFT
 RTCSSYAIIEKIERIQNAFLWQSYQVKKRQMDIKNDHKNNERLLFHGTDADSVPYVNHGFFNRSCAGKNAY
 SYGKGTYFAVDASYSKDTYSKPDNSGRKHMVVRVLTGVFTKGRAGLVTPPPKNPHNPTDLFDSVTNNT
 RSPKLFVVFFDNQAYPEYLITFTA

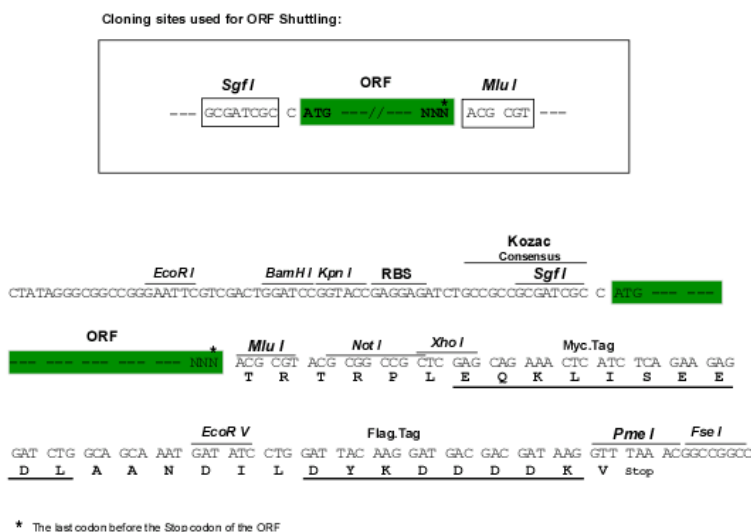
TRTRPLEQKLISEEDLAANDILDYKDDDDKV

Chromatograms:

https://cdn.origene.com/chromatograms/mk6705_h03.zip

Restriction Sites:

Sgfl-Mlul

Cloning Scheme:


ACCN: NM_152615

ORF Size: 1332 bp

OTI Disclaimer: The molecular sequence of this clone aligns with the gene accession number as a point of reference only. However, individual transcript sequences of the same gene can differ through naturally occurring variations (e.g. polymorphisms), each with its own valid existence. This clone is substantially in agreement with the reference, but a complete review of all prevailing variants is recommended prior to use. [More info](#)

OTI Annotation: This clone was engineered to express the complete ORF with an expression tag. Expression varies depending on the nature of the gene.

Components: The ORF clone is ion-exchange column purified and shipped in a 2D barcoded Matrix tube containing 10ug of transfection-ready, dried plasmid DNA (reconstitute with 100 ul of water).

- Reconstitution Method:**
1. Centrifuge at 5,000xg for 5min.
 2. Carefully open the tube and add 100ul of sterile water to dissolve the DNA.
 3. Close the tube and incubate for 10 minutes at room temperature.
 4. Briefly vortex the tube and then do a quick spin (less than 5000xg) to concentrate the liquid at the bottom.
 5. Store the suspended plasmid at -20°C. The DNA is stable for at least one year from date of shipping when stored at -20°C.

RefSeq: [NM_152615.2](#)

RefSeq Size: 1956 bp

RefSeq ORF: 1335 bp

Locus ID: 165631

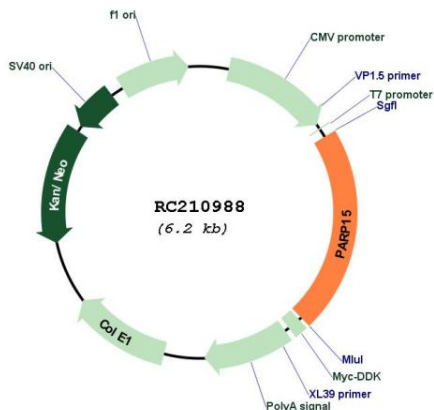
UniProt ID: [Q460N3](#)

Cytogenetics: 3q21.1

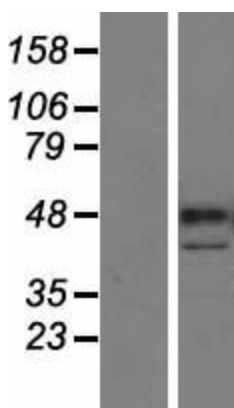
MW: 49.5 kDa

Gene Summary: PARP15 is a macrodomain-containing transcriptional repressor with poly(ADP-ribose) polymerase activity (Aguiar et al., 2005 [PubMed 16061477]).[supplied by OMIM, May 2008]

Product images:



Circular map for RC210988



Western blot validation of overexpression lysate (Cat# [LY407420]) using anti-DDK antibody (Cat# [TA50011-100]). Left: Cell lysates from untransfected HEK293T cells; Right: Cell lysates from HEK293T cells transfected with RC210988 using transfection reagent MegaTran 2.0 (Cat# [TT210002]).