

Product datasheet for **RC210987**

CHDC2 (NM_173695) Human Tagged ORF Clone

Product data:

Product Type:	Expression Plasmids
Product Name:	CHDC2 (NM_173695) Human Tagged ORF Clone
Tag:	Myc-DDK
Symbol:	CHDC2
Synonyms:	CHDC2; CXorf22; CXorf30; CXorf59
Mammalian Cell Selection:	Neomycin
Vector:	pCMV6-Entry (PS100001)
E. coli Selection:	Kanamycin (25 ug/mL)



[View online »](#)

ORF Nucleotide Sequence:

>RC210987 ORF sequence
 Red=Cloning site Blue=ORF Green=Tags(s)

TTTTGTAATACGACTCACTATAGGGCGGCCGGAATTCGTCGACTGGATCCGGTACCGAGGAGATCTGCC
 GCC**CGCATCGCC**

ATGGCAATTCATCTGGATAAGCAAAACATTATTTTAAAGAATGATAAGGATGAATATCTTAAAGAAGACTA
 GAGATGGTGTTCCTCCCTACCAGGATGCTAAACCACCTCTCCTGCTCAATTAAGAACATACAC
 CACTAGCAAATCAATGATGCTGAACCTGCAAAGGAACTTATTTATTGGAGTGGAAAGTACTGCCTGAA
 AATTTGCACTTGGATGAAAGTGAACATCAGAGGAAGATCATGGGTCTCTGAAAAGGAAAAATATGAAC
 AATTCCTTTCTTTGAGGAAGGAACAAAGGCACACTACTTTTTGAGAAGTTGTAATGCAGCAGACAGC
 CTGGTTCAGTCTTTGGCTGGCCTGAAGGACCCATTCTTTTTCTATTCCAGAGACTATAAGAAGGGAT
 GTATATAAAATGCAATTCTACTCATCAACCTCGCCACCCAAAAGTTTTCCAGACAGAATGACTTTTCCA
 AATATAAAGACCATTTATGATGTGCTGCTCCATTTGAGTGGAAAATGCCACCTGGAATTAATCAAG
 TCAATCTTTACCTGTAGATAACCATGAAAAAGGGTAATCAACTCCATTTGCAACATTCCTCACTCTG
 GACTTTCTCAATGCTCAAGGAGGATGTATTTACATGTCCTGCCAGAATTTTGCTTGAACCAGAAGATT
 ATAAGAGTGGATTGAAATTATGTCTTCCACTAATACGATGCCTGTGAGTTCCTGTACACCTAAGAAAA
 ATGTTCTATTGTTATAGAAATGTCTAAATTTGAAGCCTGGAGTAAACGGGCATGGACAGATGATTTCTA
 CAGATATAAAGTTCCTGTTCTATCCCGTGTAGTGCCACTGCAGCAATAATATGCCCCCATATGTG
 TGCAAAATACACCAAAAGTCAATCCTTGTTCATCCAGCAACATATATCTGATTCTGAAAGAATTTT
 GCTTAGTTGGATGAACATAAATTTGAGAATACTCGACATGTGATATGAAAAACTGTACAAAAGATGTT
 ATCCCTTCTGAGAGATGGATAGTAAATTTGACAAAGACCTTTCAGATGGTCTTGTTCGAAACACAGT
 TGGGAGCCTATTGCCATTCTTGATTGAGTCTCATTTTATAAATATGTACACACGACCAAAAAGTCTGA
 AGAGTATCTGCACAATTGCCTGATTATTGTAATACTCTTTATGAAATTGACTTTGACGTGGAAATACAG
 GTGTGTCTGAGGGTGTTCCAAAGGAGATGGATGCAGGAGTCAAGTGCCTGAGAAAGGAAGATATGCCCT
 CAGTGTGGTGTACCATCCGATTGGCTGTGGCAGTGGCCAGAACAAGAGACAGAAGAAGGGGGATAT
 TCAGTTTGCTTGTTCCTTGTTCCTTTTATTTTGTCTTTTATTTTGTCTGATCTCTTTCTCCCTTTGGAGC
 AGGATGCATTTTTTCTCCTTCTGCCCTGGACATC

**ACCGGTACGCGGCCGCTCGAGCAGAACTCATCTCAGAAGAGGATCTGGCAGCAATGATATCCTGGATT
 ACAAGGATGACGACGATAAGGTTTAA**

Protein Sequence:

>RC210987 protein sequence
 Red=Cloning site Green=Tags(s)

MAIHLDKQNIILKNDKDEYLKTRDGVLPYQDAKPPSPASIKKTYTTSKFNDAEPAKGNLFIGVEVLP
 NLHLDESETSEEDHGSLEKEKYEQFLSLEEGTKAHYFFEKVVNAAQWFLSGWPEGPHSFSIPETIRRD
 VYKMQFYSSTSPQKFSRQDFSKYNKTIYDVLHLSGKMPPGINSSQSLPVDNHEKRVIQLHLQHSSLL
 DFLNAQGGCISHVLPFLLPEPEDYKRWIEIMSSNTMPVSSCTPKKCSI VIEMSKFEAWSKRAWTDVFL
 QIYKVLVLSRVVPYCSNMPPICVQNTPKVNPCFASSNIYSDSERILLSWMNINYENTRHIWKNCHKDV
 IPSERWIVNFDKLDSDGLVFATQLGAYCPFLIESHFINMYTRPKSPEEYLHNCLII VNTLYEIDFVVEIQ
 VCLRVFPKEMDAGVSGLRKEDMPSVWVVTIRLAVAVARTKRQKKGDIQFACFFVCLFFFIFVVISFSLWS
 RMHFFLLPLDI

TRTRPLEQKLI SEEDLAANDILDYKDDDDKV

Chromatograms:

https://cdn.origene.com/chromatograms/mk6371_a08.zip

Restriction Sites:

SgfI-MluI

Cloning Scheme:


ACCN: NM_173695

ORF Size: 1506 bp

OTI Disclaimer: The molecular sequence of this clone aligns with the gene accession number as a point of reference only. However, individual transcript sequences of the same gene can differ through naturally occurring variations (e.g. polymorphisms), each with its own valid existence. This clone is substantially in agreement with the reference, but a complete review of all prevailing variants is recommended prior to use. [More info](#)

OTI Annotation: This clone was engineered to express the complete ORF with an expression tag. Expression varies depending on the nature of the gene.

Components: The ORF clone is ion-exchange column purified and shipped in a 2D barcoded Matrix tube containing 10ug of transfection-ready, dried plasmid DNA (reconstitute with 100 ul of water).

- Reconstitution Method:**
1. Centrifuge at 5,000xg for 5min.
 2. Carefully open the tube and add 100ul of sterile water to dissolve the DNA.
 3. Close the tube and incubate for 10 minutes at room temperature.
 4. Briefly vortex the tube and then do a quick spin (less than 5000xg) to concentrate the liquid at the bottom.
 5. Store the suspended plasmid at -20°C. The DNA is stable for at least one year from date of shipping when stored at -20°C.

RefSeq: [NM_173695.2](#), [NP_775966.1](#)

RefSeq Size: 1956 bp

RefSeq ORF: 1509 bp

Locus ID: 286464

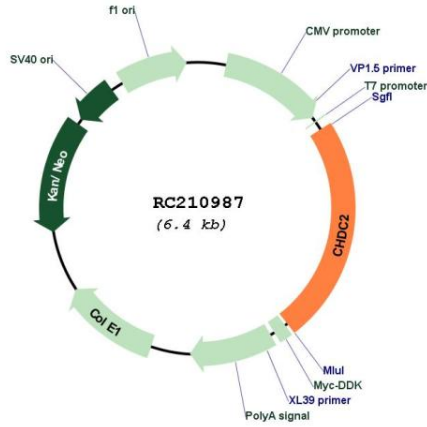
Cytogenetics: Xp21.1

Protein Families: Transmembrane

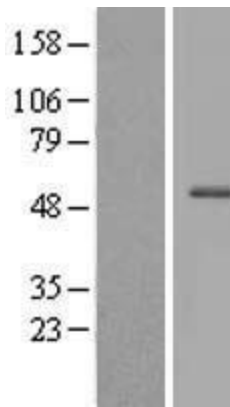
MW: 58.1 kDa

Gene Summary: While this gene is well-supported by transcript data, no functional information on its protein product is currently available. [provided by RefSeq, Dec 2009]

Product images:



Circular map for RC210987



Western blot validation of overexpression lysate (Cat# [LY406565]) using anti-DDK antibody (Cat# [TA50011-100]). Left: Cell lysates from untransfected HEK293T cells; Right: Cell lysates from HEK293T cells transfected with RC210987 using transfection reagent MegaTran 2.0 (Cat# [TT210002]).