

## Product datasheet for RC210986

### HUS1B (NM\_148959) Human Tagged ORF Clone

#### Product data:

Product Type:	Expression Plasmids
Product Name:	HUS1B (NM_148959) Human Tagged ORF Clone
Tag:	Myc-DDK
Symbol:	HUS1B
Mammalian Cell Selection:	Neomycin
Vector:	pCMV6-Entry (PS100001)
E. coli Selection:	Kanamycin (25 ug/mL)
ORF Nucleotide Sequence:	>RC210986 ORF sequence Red=Cloning site Blue=ORF Green=Tags(s)

TTTTGTAATACGACTCACTATAGGGCGGCCGGAATTCGTCGACTGGATCCGGTACCGAGGAGATCTGCC  
GCC**CGATCGCC**

ATGAAGTTTCGCGCCAAGATCACCGCAAAGGCTGTCTAGAGCTGTTCAATCACGTCAGCGGCACCCTCG  
CGAGGCTAGCGAAGTCTGCGTGCTCCGCGTGCGCCCTGACAGCCTGTGCTTCGGCCCCGCGGGTTCGG  
CGGCCTCCACGAGGCCAGGCTGTGGTGCGAGGTGCGGCAGGGGGCCTCCAGCAGTTTCGCATGGAAGGT  
GTCTCGGAAGATCTCGATGAGATCCACCTGGAGCTGACGGCGGAGCACCTGTCCCGGGCGGCGAGAAGCG  
CAGCGGGCGCTCCTCCCTGAAGCTGCAGCTGACCCACAAGCGCCGCCCTCCCTCACGGTGGCGGTGGA  
GCTGGTCTCGTCCCTGGGCCGCGCTCGCAGCGTGGTGCACGATCTGCCCGTGCGGGTGCTTCCCAGGAGA  
GTGTGGCGGGACTGCCTGCCGCCAGCCTGCGCGCCTCCGACGCGAGCATCCGCCTGCCGCGCTGGAGGA  
CGCTGAGGAGCATCGTGGAGAGGATGGCGAACGTGGGCAGTACGCTGCTGGTGAAGCAAACCTCAGTGG  
CAGGATGACCCTGAGTATAGAGACGGAGGTGGTGTCCATTCAAAGTTATTTAAAAATCTTGAAACCTT  
CCCCAGTCGGCTGTGGGTGTGCCTGAAAACAGAGACCTGGAGAGCATGGTGAAGTGCGGGTGGACAATC  
GGAAGCTTCTGCAGTTTTTGGAGGGACAGCAAATACATCCTACGACGGCCCTGTGCAATATTTGGGACAA  
TACTCTTCTCAGCTTGTGGTCAAGAATATGTCTCTTTCAGTATTTTCATTCCTGCCTTG

**ACGCGT**ACGCGGCCGCTCGAGCAGAAACTCATCTCAGAAGAGGATCTGGCAGCAAATGATATCCTGGATT  
ACAAGGATGACGACGATAAGGTTTAA



[View online »](#)

**Protein Sequence:** >RC210986 protein sequence  
 Red=Cloning site Green=Tags(s)

MKFRAKITGKGCLELFIHVSGETVARLAKVCVLRVVRPDSLFCGPAGSGGLHEARLWCEVRQGAFFQFRMEG  
 VSEDLDEIHLELTAEHL SRAARSAAGASSLKLQLTHKRRPSLTVAVELVSSLGRARSVVHDL PVRVLP  
 VWRDCLPPSLRASDASIRLPRWRTLRSIVERMANVGSVHLVEANLSGRMTLSIETEVVSIQSYFKNLGNP  
 PQSAVGVPENRDLESMVQVRVDNRKLLQFLEGQQIHPTTALCNIWDNTLLQLVLVQEYVSLQYFIPAL

TRTRPLEQKLISEEDLAANDILDYKDDDDKV

**Chromatograms:** [https://cdn.origene.com/chromatograms/mk6371\\_h08.zip](https://cdn.origene.com/chromatograms/mk6371_h08.zip)

**Restriction Sites:** SgfI-MluI

**Cloning Scheme:**



**ACCN:** NM\_148959

**ORF Size:** 834 bp

**OTI Disclaimer:** The molecular sequence of this clone aligns with the gene accession number as a point of reference only. However, individual transcript sequences of the same gene can differ through naturally occurring variations (e.g. polymorphisms), each with its own valid existence. This clone is substantially in agreement with the reference, but a complete review of all prevailing variants is recommended prior to use. [More info](#)

**OTI Annotation:** This clone was engineered to express the complete ORF with an expression tag. Expression varies depending on the nature of the gene.

**Components:** The ORF clone is ion-exchange column purified and shipped in a 2D barcoded Matrix tube containing 10ug of transfection-ready, dried plasmid DNA (reconstitute with 100 ul of water).

**Reconstitution Method:**

1. Centrifuge at 5,000xg for 5min.
2. Carefully open the tube and add 100ul of sterile water to dissolve the DNA.
3. Close the tube and incubate for 10 minutes at room temperature.
4. Briefly vortex the tube and then do a quick spin (less than 5000xg) to concentrate the liquid at the bottom.
5. Store the suspended plasmid at -20°C. The DNA is stable for at least one year from date of shipping when stored at -20°C.

**RefSeq:** [NM\\_148959.1](#)

**RefSeq Size:** 1026 bp

**RefSeq ORF:** 837 bp

**Locus ID:** 135458

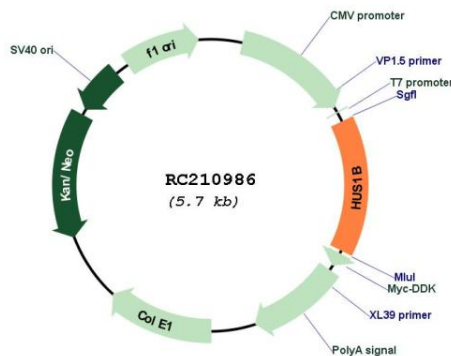
**UniProt ID:** [Q8NHY5](#)

**Cytogenetics:** 6p25.3

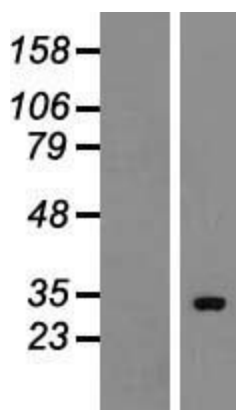
**MW:** 31 kDa

**Gene Summary:** The protein encoded by this gene is most closely related to HUS1, a component of a cell cycle checkpoint protein complex involved in cell cycle arrest in response to DNA damage. This protein can interact with the check point protein RAD1 but not with RAD9. Overexpression of this protein has been shown to induce cell death, which suggests a related but distinct role of this protein, as compared to the HUS1. [provided by RefSeq, Jul 2008]

### Product images:



Circular map for RC210986



Western blot validation of overexpression lysate (Cat# [LY407722]) using anti-DDK antibody (Cat# [TA50011-100]). Left: Cell lysates from untransfected HEK293T cells; Right: Cell lysates from HEK293T cells transfected with RC210986 using transfection reagent MegaTran 2.0 (Cat# [TT210002]).