

Product datasheet for RC210983

KRTCAP3 (NM_173853) Human Tagged ORF Clone

Product data:

Product Type:	Expression Plasmids
Product Name:	KRTCAP3 (NM_173853) Human Tagged ORF Clone
Tag:	Myc-DDK
Symbol:	KRTCAP3
Synonyms:	KCP3
Mammalian Cell Selection:	Neomycin
Vector:	pCMV6-Entry (PS100001)
E. coli Selection:	Kanamycin (25 ug/mL)
ORF Nucleotide Sequence:	>RC210983 ORF sequence Red=Cloning site Blue=ORF Green=Tags(s)

TTTTGTAATACGACTCACTATAGGGCGCCGGGAATTCGTCGACTGGATCCGGTACCGAGGAGATCTGCC
GCC**CGATCGCC**

ATGAGGCGCTGCAGTCTCTGCGCTTTCGACGCCGCCGGGGGCCAGGCGGCTGATGCGTGTGGGCCTCG
CGCTGATCTTGGTGGGCCACGTGAACCTGCTGCTGGGGCCGTGCTGCATGGCACCGTCTGCGGCACGT
GGCCAATCCCCGCGCGCTGTACGCGGAGTACACCGTAGCCAATGTCATCTCTGTGCGCTCGGGGCTG
CTGAGCGTTTCCGTGGGACTTGTGGCCCTCCTGGCGTCCAGGAACCTTCTCGCCCTCCACTGCACTGG
TCCTGCTGGCACTAGCTCTGGTGAACCTGCTCTTGTCCGTGCTGCTCCCTGGGCTCCTTCTTGCTGT
GTCACTCACTGTGGCCAACGGTGGCCGCCCTTATTGCTGACTGCCACCCAGGACTGCTGGATCCCTCTG
GTACCACTGGATGAGGGCCGGGACATACTGACTGCCCTTTGACCCACAAGAATCTATGATACAGCCT
TGGCTCTCTGGATCCCTTCTTTGCTCATGTCTGCAGGGGAGGCTGCTCTATCTGGTTACTGCTGTGTGGC
TGCACTCACTCTACGTGGAGTTGGGCCCTGCAGGAAGGACGGACTTCAGGGGCAGCTAGAGGAAATGACA
GAGCTTGAATCTCCTAAATGAAAAGGCAGGAAAATGAGCAGCTACTGGATCAAATCAAGAAATCCGGG
CATCACAGAGAAGTTGGGTT

ACGCGTACGCGGCCGCTCGAGCAGAAACTCATCTCAGAAGAGGATCTGGCAGCAAATGATATCCTGGATT
ACAAGGATGACGACGATAAGGTTTAA



[View online »](#)

Protein Sequence: >RC210983 protein sequence
 Red=Cloning site Green=Tags(s)

MRRCSLCAFDAARGPRRLMRVGLALILVGHVNLGLLAVLHGTVLRHVANPRGAVTPEYTVANVISVGSGL
 LSVSVGLVALLASRNLLRPPLHWVLLALALVNLGLLAVSLTVANGRRLLIADCHPGLLDPL
 VPLDEGPGHTDCPFDPTRIDYDIALALWIPSLMSAGEAALSGYCCVAALTLRGVGPCKDGLQGLQLEEMT
 ELESFKCKRQENEQLLDQNEIRASQRSWV

TRTRPLEQKLISEEDLAANDILDYKDDDDKV

Chromatograms: https://cdn.origene.com/chromatograms/mk6372_d05.zip

Restriction Sites: SgfI-MluI

Cloning Scheme:

Cloning sites used for ORF Shuttling:



* The last codon before the Stop codon of the ORF

ACCN: NM_173853

ORF Size: 720 bp

OTI Disclaimer: The molecular sequence of this clone aligns with the gene accession number as a point of reference only. However, individual transcript sequences of the same gene can differ through naturally occurring variations (e.g. polymorphisms), each with its own valid existence. This clone is substantially in agreement with the reference, but a complete review of all prevailing variants is recommended prior to use. [More info](#)

OTI Annotation: This clone was engineered to express the complete ORF with an expression tag. Expression varies depending on the nature of the gene.

Components: The ORF clone is ion-exchange column purified and shipped in a 2D barcoded Matrix tube containing 10ug of transfection-ready, dried plasmid DNA (reconstitute with 100 ul of water).

Reconstitution Method:

1. Centrifuge at 5,000xg for 5min.
2. Carefully open the tube and add 100ul of sterile water to dissolve the DNA.
3. Close the tube and incubate for 10 minutes at room temperature.
4. Briefly vortex the tube and then do a quick spin (less than 5000xg) to concentrate the liquid at the bottom.
5. Store the suspended plasmid at -20°C. The DNA is stable for at least one year from date of shipping when stored at -20°C.

RefSeq: [NM_173853.4](#)

RefSeq Size: 906 bp

RefSeq ORF: 723 bp

Locus ID: 200634

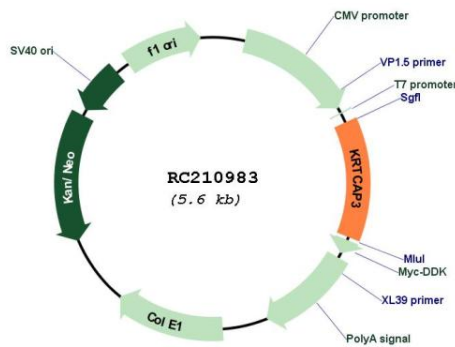
UniProt ID: [Q53RY4](#)

Cytogenetics: 2p23.3

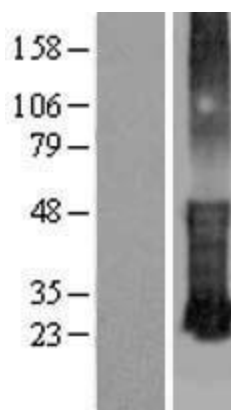
Protein Families: Transmembrane

MW: 25.6 kDa

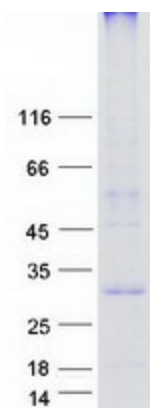
Product images:



Circular map for RC210983



Western blot validation of overexpression lysate (Cat# [LY406322]) using anti-DDK antibody (Cat# [TA50011-100]). Left: Cell lysates from untransfected HEK293T cells; Right: Cell lysates from HEK293T cells transfected with RC210983 using transfection reagent MegaTran 2.0 (Cat# [TT210002]).



Coomassie blue staining of purified KRTCAP3 protein (Cat# [TP310983]). The protein was produced from HEK293T cells transfected with KRTCAP3 cDNA clone (Cat# RC210983) using MegaTran 2.0 (Cat# [TT210002]).