

Product datasheet for RC210982

COX18 (NM_173827) Human Tagged ORF Clone

Product data:

| | |
|---------------------------|---|
| Product Type: | Expression Plasmids |
| Product Name: | COX18 (NM_173827) Human Tagged ORF Clone |
| Tag: | Myc-DDK |
| Symbol: | COX18 |
| Synonyms: | COX18HS |
| Mammalian Cell Selection: | Neomycin |
| Vector: | pCMV6-Entry (PS100001) |
| E. coli Selection: | Kanamycin (25 ug/mL) |
| ORF Nucleotide Sequence: | >RC210982 ORF sequence Red=Cloning site Blue=ORF Green=Tags(s) |

TTTTGTAATACGACTCACTATAGGGCGCCGGGAATTCGTCGACTGGATCCGGTACCGAGGAGATCTGCC
GCC**CGATCGCC**

ATGCTGTGCCGGCTCGGCGGTGGTGGCTGCGGCCGCTCCCTGCCCTGCAGCTTTGGGCTAGGGACCTGC
CGCTTGCGCCGGTTCCTACGAGCGGCGCCAAGCGCCCACTCTCCAGTGTGGGCAGTGGCACCAGTCTC
TGCAGTACATGCGAACGGCTGGTACGAGGCCCTGGCCGCTCTCGCCGGTGGGGTTCGGGAGGAAGTA
CTGCTCGGCGTGCACGCCCCACGGCCCTGCCCTGGTGGGCAGCATTCTGCTCTCCACCGTGGCCTTAC
GGGTGCTGTACGCTGCCTTTGGCAGCCTACCAGCACTACATCCTGGCCAAGGTGGAAAATTTGCAGCC
AGAAATAAAAACCTATTGCCAGGCATCTTAACCAAGAAGTTGCAGTTCGTGCAAAATCAGTTGGGGTGGTCC
AAAAGAGATGCCAGGCTCACTTATCTAAAGAATATGAGGAGGCTAATTTCAAGAGTATATGTGCGAGATA
ACTGCCACCCTTTCAAAGCCACTGTGTTGGTTGGATTGAGCTTCCAATGTGGATCTTCAATGCTTTTGC
TCTCCGGAATTTAAGCACGGGGCAGCACATTCAGAAGTTTTTCTGTTCAAGAACAGTTAGCTACTGGT
GGAATTCGTGGTTTCTGACCTCACTGCACCCGACTCCACTGGATTCTGCCTATCTCTGTTGGCGTCA
TCAATTTGTTAATAGTGGAGATTTGTGCTCTACAAAAAATTTGGAATGTCTCGTTTCAGACGTATATTAC
GTACTTTGTCGCGTCAATGTCGGTGGTGGATGATACCAATTGCTGCAACGGTACCCTCATCAATTGTTCTC
TACTGGTTATGCTCCAGCTTCGTGGCCCTTTCACAGAATTTGCTGCTGCGTTCTCCTGGATTTCCGCAAC
TTTGCCGAATACCATCGACCAAGTCAGATTACAGAACTCCTTATAAAGACATATTTGCTGCCTTTAATAC
CAAGTTCATTTCAAGAAA

ACGCGTACGCGGCCGCTCGAGCAGAACTCATCTCAGAAGAGGATCTGGCAGCAAATGATATCCTGGATT
ACAAGGATGACGACGATAAGGTTTAA



[View online »](#)

Protein Sequence: >RC210982 protein sequence
Red=Cloning site Green=Tags(s)

MLCRLGGRWLRPLPALQLWARDLPLAPVPTSGAKRPTLPVWAVAPVSAVHANGWYEALAASSPVRVAEEV
 LLGVHAATGLPWGSIILLSTVALRGAVTLPLAAYQHYYLAKVENLQPEIKTIARHLNQEVAVRANQLGWS
 KR DARLTYLKNMRRLLISELYVRDNCHPFKATVLVWVQLPMWIFMSFALRNLSTGAAHSEGF SVQEQLATG
 GILWFPDLTAPDSTWILPISVGVINLLIVEICALQKIGMSRFQTYITYFVRAMSVLMIPIAATVPSSIVL
 YWLCSSFVGLSQNLLLRSPGFRQLCRIPSTKSDSETPYKDIFAAFNTKFI SRK

TRTRPLEQKLISEEDLAANDILDYKDDDDKV

Chromatograms: https://cdn.origene.com/chromatograms/mk6372_b09.zip

Restriction Sites: SgfI-MluI

Cloning Scheme:



ACCN: NM_173827

ORF Size: 999 bp

OTI Disclaimer: The molecular sequence of this clone aligns with the gene accession number as a point of reference only. However, individual transcript sequences of the same gene can differ through naturally occurring variations (e.g. polymorphisms), each with its own valid existence. This clone is substantially in agreement with the reference, but a complete review of all prevailing variants is recommended prior to use. [More info](#)

OTI Annotation: This clone was engineered to express the complete ORF with an expression tag. Expression varies depending on the nature of the gene.

Components: The ORF clone is ion-exchange column purified and shipped in a 2D barcoded Matrix tube containing 10ug of transfection-ready, dried plasmid DNA (reconstitute with 100 ul of water).

Reconstitution Method:

1. Centrifuge at 5,000xg for 5min.
2. Carefully open the tube and add 100ul of sterile water to dissolve the DNA.
3. Close the tube and incubate for 10 minutes at room temperature.
4. Briefly vortex the tube and then do a quick spin (less than 5000xg) to concentrate the liquid at the bottom.
5. Store the suspended plasmid at -20°C. The DNA is stable for at least one year from date of shipping when stored at -20°C.

RefSeq: [NM_173827.4](#)

RefSeq Size: 4530 bp

RefSeq ORF: 1002 bp

Locus ID: 285521

UniProt ID: [Q8N8Q8](#)

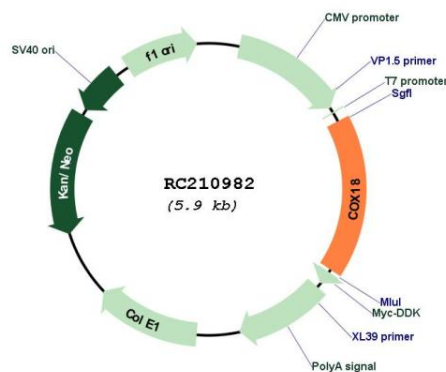
Cytogenetics: 4q13.3

Protein Families: Transmembrane

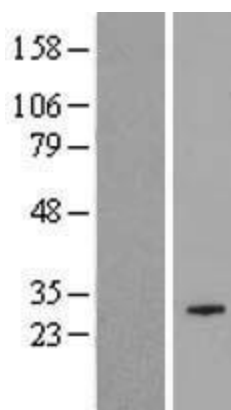
MW: 37.1 kDa

Gene Summary: This gene encodes a cytochrome c oxidase assembly protein. The encoded protein is essential for integral membrane protein insertion into the mitochondrial inner membrane. It is also required for cytochrome c oxidase assembly and activity. Alternative splicing results in multiple transcript variants. [provided by RefSeq, Jul 2014]

Product images:



Circular map for RC210982



Western blot validation of overexpression lysate (Cat# [LY406432]) using anti-DDK antibody (Cat# [TA50011-100]). Left: Cell lysates from untransfected HEK293T cells; Right: Cell lysates from HEK293T cells transfected with RC210982 using transfection reagent MegaTran 2.0 (Cat# [TT210002]).