

## Product datasheet for RC210977

### LIM1 (LHX1) (NM\_005568) Human Tagged ORF Clone

#### Product data:

Product Type:	Expression Plasmids
Product Name:	LIM1 (LHX1) (NM_005568) Human Tagged ORF Clone
Tag:	Myc-DDK
Symbol:	LIM1
Synonyms:	LIM-1; LIM1
Mammalian Cell Selection:	Neomycin
Vector:	pCMV6-Entry (PS100001)
E. coli Selection:	Kanamycin (25 ug/mL)
ORF Nucleotide Sequence:	>RC210977 ORF sequence Red=Cloning site Blue=ORF Green=Tags(s)

TTTTGTAATACGACTCACTATAGGGCGGCCGGGAATTCGTCGACTGGATCCGGTACCGAGGAGATCTGCC  
GCC**CGATCGCC**

ATGGTTCCTGCTGCCGGCTGCAAAGGCCATCCTGGACCGCTTCTCTTGAACGTGCTGGACAGGGCCT  
GGCAGCTCAAGTGCCTCCAGTGTGTGAATGTAATGCAACCTGACCGAGAAGTGCTTCTCCAGGGAAGG  
CAAACCTACTGCAAGAACGACTTCTCCGGTGTTCGGTACCAAATGCGCAGGCTGCGCTCAGGGCATC  
TCCCTAGCGACTGGTGGGAGAGCGCGGAGCAAAGTGTTCACCTGAACCTGCTTACCTGCATGATGT  
GTAACAAGCAGCTCTCCACTGGCGAGGAACTCTACATCATCGACGAGAATAAGTTCGTCTGCAAAGAGGA  
TTACCTAAGTAACAGCAGTGTGGCAAAGAGAACAGCCTTCACTCGGCCACCACGGGAGTGACCCCACT  
TTGTCTCCGGATTCCCAAGACCCGTCGCAGGACGACGCAAGGACTCGGAGAGCGCAACGTGTCGGACA  
AGGAAGCGGGTAGCAACGAGAATGACGACCAGAACCTGGGCGCAAGCGGCGGGGACCGCGCACCACCAT  
CAAAGCCAAGCAGCTGGAGACGCTGAAGGCCGCTTCGCTGTACACCAAGCCACCCGCCACATCCGC  
GAGCAGCTGGCGCAGGAGACCGGCTCAACATGCGCGTCATTAGGTCTGGTCCAGAACCGGCGCTCCA  
AGGAGCGGAGGATGAAGCAGCTGAGCGCCCTGGGCGCCCGGCGCCACGCCTTCTCCGAGTCCGCGCCG  
GATGCGGCCGCTGGTGGACCGCTGGAGCCGGGCGAGCTCATCCCAATGGTCCCTTCTCCTTCTACGGA  
GATTACCAGAGCGAGTACTACGGGCCCGGGGCAACTACGACTTCTCCGCAAGGCCCCCGTCCCTCGC  
AGGCCAGACACCAAGTGGACCTACCCCTTCGTGCGGTCTCTGGGCGTCCGGGACGCCCTGGGTGGCCT  
GGAGCACCCGCTGCCGGGCCACCACCCGTCGAGCGAGGCGCAGCGGTTTACCGACATCCTGGCGACCCA  
CCCGGGGACTCGCCAGCCCGAGCCAGCCTGCCGGGCTCTGCACTCCATGTCGGCCGAGGTCTTCG  
GACCCAGCCCGCCTTCTCGTCGTGTCGGTCAACGGTGGGGCGAGCTACGGAACCACCTGTCCACCC  
CCCCAAATGACGAGGCGGCCGTGG

**ACGCGT**ACGCGGCCGCTCGAGCAGAACTCATCTCAGAAGAGGATCTGGCAGCAAATGATATCCTGGATT  
ACAAGGATGACGACGATAAGGTTTAA



[View online »](#)



**Reconstitution Method:**

1. Centrifuge at 5,000xg for 5min.
2. Carefully open the tube and add 100ul of sterile water to dissolve the DNA.
3. Close the tube and incubate for 10 minutes at room temperature.
4. Briefly vortex the tube and then do a quick spin (less than 5000xg) to concentrate the liquid at the bottom.
5. Store the suspended plasmid at -20°C. The DNA is stable for at least one year from date of shipping when stored at -20°C.

**Note:** Plasmids are not sterile. For experiments where strict sterility is required, filtration with 0.22um filter is required.

**RefSeq:** [NM\\_005568.5](#)

**RefSeq Size:** 3428 bp

**RefSeq ORF:** 1221 bp

**Locus ID:** 3975

**UniProt ID:** [P48742](#)

**Cytogenetics:** 17q12

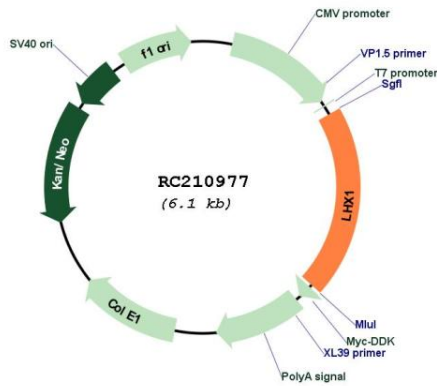
**Domains:** homeobox, LIM

**Protein Families:** ES Cell Differentiation/IPS, Transcription Factors

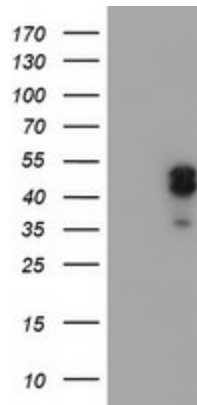
**MW:** 44.8 kDa

**Gene Summary:** This gene encodes a member of a large protein family which contains the LIM domain, a unique cysteine-rich zinc-binding domain. The encoded protein is a transcription factor important for the development of the renal and urogenital systems. This gene is a candidate for Mayer-Rokitansky-Kuster-Hauser syndrome, a disorder characterized by anomalies in the female genital tract. [provided by RefSeq, Dec 2010]

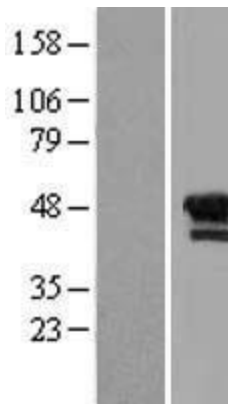
Product images:



Circular map for RC210977



HEK293T cells were transfected with the pCMV6-ENTRY control (Cat# [PS100001], Left lane) or pCMV6-ENTRY LHX1 (Cat# RC210977, Right lane) cDNA for 48 hrs and lysed. Equivalent amounts of cell lysates (5 ug per lane) were separated by SDS-PAGE and immunoblotted with anti-LHX1 (Cat# [TA504527]). Positive lysates [LY417207] (100ug) and [LC417207] (20ug) can be purchased separately from OriGene.



Western blot validation of overexpression lysate (Cat# [LY417207]) using anti-DDK antibody (Cat# [TA50011-100]). Left: Cell lysates from untransfected HEK293T cells; Right: Cell lysates from HEK293T cells transfected with RC210977 using transfection reagent MegaTran 2.0 (Cat# [TT210002]).