

Product datasheet for **RC210973**

ADCK5 (NM_174922) Human Tagged ORF Clone

Product data:

Product Type:	Expression Plasmids
Product Name:	ADCK5 (NM_174922) Human Tagged ORF Clone
Tag:	Myc-DDK
Symbol:	ADCK5
Mammalian Cell Selection:	Neomycin
Vector:	pCMV6-Entry (PS100001)
E. coli Selection:	Kanamycin (25 ug/mL)



[View online »](#)

ORF Nucleotide Sequence:

>RC210973 representing NM_174922
 Red=Cloning site Blue=ORF Green=Tags(s)

TTTTGTAATACGACTCACTATAGGGCGGCCGGAATTCGTCGACTGGATCCGGTACCGAGGAGATCTGCC
 GCC**CGCATCGCC**

ATGTGGCGACCGGTGCAGCTCTGTCAATTCCTCTGCTCTGCTGCACAGCAGGCAGAAGCCCTGGCCGT
 CCCTGCTGTGTTCTTCAGGAGAAACGTCAGGGGCCTTCTCCAAGGTTCTCCAGCCCCACACCCCTGTG
 GAGGAAGGTGCTCTCCACCGCGGTAGTGGGGCGCCCTGCTCCTCGGAGCCCGTATGTATGGCAGAG
 GCACGGGAGAAGAGGAGGATGCGGCTCGTGGTGGATGGCATGGGGCGCTTTGGCAGGTCTCTGAAGGTGCG
 GCCTGCAGATCTCCCTGGACTACTGGTGGTGCACCAATGTTGTCCTTCGAGGGGTGAAGAGAACAGCCC
 AGGCTACTTGGAGGTGATGTCTGCGTGTACCAGCGGGCGGTGATGCCCTGGTGGCAGGGGCCATCAGC
 AACGGGGCCCTACGTGAAGCTGGGCCAGGGCTGTGCTCCTCAACCACCTGTTCCCCCGAGTATA
 CCCGGACCCTGCGCGTGTAGAGGACAGGGCCCTCAAGCGGGCTTCCAGGAGGTGGATGAGTTGTTCTCT
 TGAGGACTTCCAGGCCCTCCCCACGAGCTTCCAGGAGTTTACTACCAGCAATTGCTGCCGCCAGC
 CTGGCACAGGTGCACAGAGCCAAGCTGCACGATGGCACCAGCGTGGCTGTGAAGGTGCAGTACATCGACC
 TGGCGGACCGCTTTGATGGGGACATCCACACCCTGGAGCTCCTGCTGCGGCTCGTTGAGGTCATGCACCC
 CAGCTTTGGCTTCAGCTGGTCTCCAGGACCTGAAGGGGACCCTGGCCAGGAGCTGGACTTCGAGAAT
 GAGGGCCGCAACGCAGAGCGCTGTGCGCGGGAGCTGGCGCACTTCCCCTACGTCGTGGTCCCGCGTGC
 ACTGGGACAAGTCCAGCAAGCGCGTGTCTACTGCCGACTTCTGCGCCGGCTGCAAGGTCAACGATGTGGA
 GGCCATCAGGAGCCAGGGGCTGGCAGTGCATGACATAGCAGAAAAGCTCATCAAGGCCTTTGCTGAGCAG
 ATATTTTACACCGGCTTCATCCACTCGGACCCACATCTGGCAACGTTCTGGTGGGAAAGGCCCGGACG
 GGAAAGCGGAGCTGGTGTCTGGACCAGGGCTCTACCAGTTCCTGGAGGAGAAGGACCGCCGACGCCCT
 CTGCCAGCTGTGCGGGCCATCATCTGCGGGACGACCGCCCATGAGGGCGCACGCAGCCGCACTGGGG
 GTGCAAGACTACCTCCTGTTGCGCGAGATGCTCATGCAGCGCCCGTGGCCCTGGGGCAGCTGTGGGGCT
 CGCACCTACTGAGCCGGAAGAGGCGGCCTACATGGTGGACATGGCCCGGAGCGCTTCGAGGCGCTCAT
 GGCGGTGCTCAGGGAGCTGCCGCGGCCATGCTGCTGGTGTGCGCAACATCAACACCGTGCAGCGTATC
 AACGTGGCCCTCGGCGCCCCGTGGACCCTACTTCTTATGGCTAAAAGGGCTGTCCGGGGCTGGAGCC
 GCCTGGCGGGCGCCAGTATCGGGGTGTCTACGGCACCAGCTCCTGCGCCACGCCAAGGTGCTCTGGGA
 GATGCTCAAGTTGAAGTGGCGCTCAGGCTGGAGACCTTGCCATGCGGCTGACCGCCCTCTGGCTCGT
 GCTCTGGTCCACCTGAGCTCGTCCCCACGGGAGGAGCTCTACCAGTACCTGGAGACC

ACGCGTACGCGGGCCGCTCGAGCAGAAACTCATCTCAGAAGAGGATCTGGCAGCAAATGATATCCTGGATT
 ACAAGGATGACGACGATAAGGTTTAA

Protein Sequence:

>RC210973 representing NM_174922
 Red=Cloning site Green=Tags(s)

MWRPVQLCHFHSALLHSRQKPWPSPAVFFRRNVRGLPPRFSSPTPLWRKVLSTAVVGAPLLL GARYVMAE
 AREKRRMRLVVDGMGRFGRSLKVLQISLDYWWCTNVVLRGVEENSPGYLEVMSACHQRAADALVAGAIS
 NGGLYVKLGQGLCSFNHLLPPEYTRTLRVLEDRALKRGFQEVDELFLDFQALPHELFQEFDYQPIAAAS
 LAQVHRAKLHDGTSVAVKVQYIDLRDRFDGDIHTLELLRLVEVMHPSFGFSWVLQDLKGTLAQELDFEN
 EGRNAERCARELAHFYVVVPRVHWDKSSKRVL TADFCAGCKVNDVEAIRSQGLAVHDI AEKLIKAF AEQ
 IFYTGFIHSDPHPGNVLVRKGPDKAELVLLDHGLYQFLEEKDRAALCQLWRAIILRDDAAMRAHAAALG
 VQDYLLFAEMLMQRPVRLGQLWGSLLSREEAAYMVMARERFEAVMAVLRPRPMLLVLRNINTVRAI
 NVALGAPVDRYFLMAKRAVRGWSRLAGATYRGVYGTSLLRHAKVWWEMLKFEVALRLETLAMRLTALLAR
 ALVHLSLVPPAEELYQYLET

TRTRPLEQKLISEEDLAANDILDYKDDDDKV

Chromatograms:

https://cdn.origene.com/chromatograms/mg3102_e05.zip

Restriction Sites:

Sgfl-MluI

Cloning Scheme:


ACCN: NM_174922

ORF Size: 1740 bp

OTI Disclaimer: The molecular sequence of this clone aligns with the gene accession number as a point of reference only. However, individual transcript sequences of the same gene can differ through naturally occurring variations (e.g. polymorphisms), each with its own valid existence. This clone is substantially in agreement with the reference, but a complete review of all prevailing variants is recommended prior to use. [More info](#)

OTI Annotation: This clone was engineered to express the complete ORF with an expression tag. Expression varies depending on the nature of the gene.

Components: The ORF clone is ion-exchange column purified and shipped in a 2D barcoded Matrix tube containing 10ug of transfection-ready, dried plasmid DNA (reconstitute with 100 ul of water).

- Reconstitution Method:**
1. Centrifuge at 5,000xg for 5min.
 2. Carefully open the tube and add 100ul of sterile water to dissolve the DNA.
 3. Close the tube and incubate for 10 minutes at room temperature.
 4. Briefly vortex the tube and then do a quick spin (less than 5000xg) to concentrate the liquid at the bottom.
 5. Store the suspended plasmid at -20°C. The DNA is stable for at least one year from date of shipping when stored at -20°C.

Note: Plasmids are not sterile. For experiments where strict sterility is required, filtration with 0.22um filter is required.

RefSeq: [NM_174922.5](#)

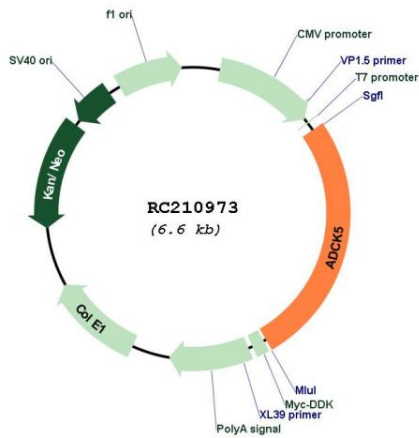
RefSeq Size: 1969 bp

RefSeq ORF: 1743 bp

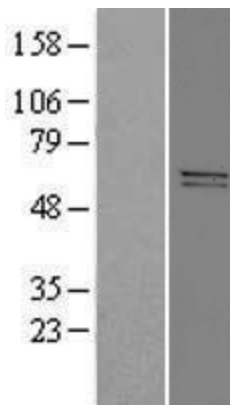
Locus ID: 203054

UniProt ID: [Q3MIX3](#)
Cytogenetics: 8q24.3
Protein Families: Druggable Genome, Protein Kinase
MW: 65.7 kDa
Gene Summary: The function of this protein is not yet clear. It is not known if it has protein kinase activity and what type of substrate it would phosphorylate (Ser, Thr or Tyr).[UniProtKB/Swiss-Prot Function]

Product images:



Circular map for RC210973



Western blot validation of overexpression lysate (Cat# [LY406404]) using anti-DDK antibody (Cat# [TA50011-100]). Left: Cell lysates from untransfected HEK293T cells; Right: Cell lysates from HEK293T cells transfected with RC210973 using transfection reagent MegaTran 2.0 (Cat# [TT210002]).