

Product datasheet for **RC210969**

POU2F3 (NM_014352) Human Tagged ORF Clone

Product data:

Product Type:	Expression Plasmids
Product Name:	POU2F3 (NM_014352) Human Tagged ORF Clone
Tag:	Myc-DDK
Symbol:	POU2F3
Synonyms:	Epoc-1; OCT-11; OCT11; OTF-11; PLA-1; PLA1; Skn-1a
Mammalian Cell Selection:	Neomycin
Vector:	pCMV6-Entry (PS100001)
E. coli Selection:	Kanamycin (25 ug/mL)



[View online »](#)

ORF Nucleotide Sequence:

>RC210969 ORF sequence
 Red=Cloning site Blue=ORF Green=Tags(s)

TTTTGTAATACGACTCACTATAGGGCGGCCGGAATTCGTCGACTGGATCCGGTACCGAGGAGATCTGCC
 GCC**CGGATCGCC**

ATGGTGAATCTGGAGTCCATGCACACAGATATCAAGATGAGTGGGGATGTAGCCGATTCCACGGATGCTC
 GCAGACTCTCAGCCAGGTGGAGCCAGGAAATGATCGAAATGGCCTAGATTTCAACAGGCAGATTAAC
 CGAAGATCTCAGTGAAGTCCCTGCAGCAGACCCTCTCCATCGGCCATGCCACCTGAGTCAAGGACCTGCC
 ATGATGTCGGAAACAAATGTCTGGGCTAAATGCCAGCCATGTGAGGACATGGCTTCCCTCCATCCGC
 TCCAGCAGCTTGTCTGGTTCCCGGCCACTTACAGTCTGTATCCAGTTCCTGCTATCTCAGACCCAGCC
 TGGGCAGCAAGGTCTGCAGCCAAATCTCTCCCTTTCCACAGCAACAAAGCGGTCTCTCTCCACAG
 ACTGGGCCGGGACTGGCATCCCAGGCATTTGGGCACCCTGGGCTGCCAGGATCTCTTTAGAACCCACC
 TGAAGCATCCCAGCATCTCCAGTGCCCAAGCATCTACCCAGCTCTGGAGGGCCGATGAGCCCAGTGA
 CCTCGAGGAGCTGGAGAAGTTTCCAAGACCTTCAAGCAGAGGCGCATTAAAGCTGGGCTTACACAGGGA
 GATGTGGGGCTGGCGATGGGAAAGCTGTATGGCAACGACTTCAGCCAGACCACCATCTCAGATTTGAGG
 CCCTCAACCTGAGCTTCAAGAACATGTGCAAGCTCAAGCCCTGCTGGAGAAGTGGCTGAATGATGCAGA
 GTCCTCTCCGTCAGACCCCTCAGTGAGCAGCCAGCTCCTACCCAGCCTCAGTGAAGTATTTGGTAGG
 AAGAGAAAGAAACGGACCAGCATCGAGACCAACATCCGCTGACTCTGGAGAAGAGGTTTCAAGATAACC
 CAAAACCCAGCTCGGAGGAGATCTCCATGATTGCAGAGCAGTTGTCCATGGAGAAGGAGGTGGTAGGGT
 CTGGTTCTGCAACCGACGCCAAAAGGAGAAGCGAATCAACTGCCCTGTGGCCACCCATCAAACCACT
 GTCTACAACTCCCGCTGGTATCTCCCTCAGGCTCTCTGGGCCCCCTCTCTGTCCCTCTGTCCACAGTA
 CCATGCCCTGGAAACAGTAACGTCATCTCTCCCTGGGAAACACAGCAGGCCTTCTCTCTGGCTCAGG
 ACTCCACGCCAGCAGCCCACTGCATCTCAAATAACTCAAAGCAGCAGTGAACCTCCGCTCCAGTTTT
 AACTCTCAGGATCTTGGTACCGATGGAATCATTCCACCTACCTCCAC

ACGCGTACGCGGCCGCTCGAGCAGAACTCATCTCAGAAGAGGATCTGGCAGCAAATGATATCTGGATT
 ACAAGGATGACGACGATAAGGTTTAA

Protein Sequence:

>RC210969 protein sequence
 Red=Cloning site Green=Tags(s)

MVNLESMTDIIKMSGDVADSTDARSTLSQVEPGNDRNGLDFNRQIKTEDLSDSLQQTLSHRPCHLSQGPA
 MMSGNQMSGLNASPCQDMASLHPLQQLVLPVGHLSVVSQFLLSQTQPGQQLQPNLLPFPQQSGLLLPQ
 TGPGLASQAFGHPGLPGSSLEPHLEASQHLVVPKHLPSGGADEPSDLEELEKFAKTFKQRRIKLGFQ
 DVGLAMGKLYGNDFSQTTISRFEALNLSFKNMCKLPLLEKWLNDAAESSPSDPSVSTPSSYPVSLSEVFR
 KRKKRTSIIETNIRLTLEKRFQDNPKPSSEESI SMIAEQLSMEKEVVRVWFNRRQKEKRINCPVATPIKPP
 VYNSRLVSPSGSLGPLSVPPVHSTMPGTVTSSCSPGNNSRPSSPGSLHASSPTASQNNSKAAVNSASSF
 NSSGSWYRWNHSTYLH

TRTRPLE**QKLISEEDLAANDILDYKDDDDKV**

Chromatograms:

https://cdn.origene.com/chromatograms/mk6371_d06.zip

Restriction Sites:

SgfI-MluI

Cloning Scheme:



ACCN: NM_014352

ORF Size: 1308 bp

OTI Disclaimer: The molecular sequence of this clone aligns with the gene accession number as a point of reference only. However, individual transcript sequences of the same gene can differ through naturally occurring variations (e.g. polymorphisms), each with its own valid existence. This clone is substantially in agreement with the reference, but a complete review of all prevailing variants is recommended prior to use. [More info](#)

OTI Annotation: This clone was engineered to express the complete ORF with an expression tag. Expression varies depending on the nature of the gene.

Components: The ORF clone is ion-exchange column purified and shipped in a 2D barcoded Matrix tube containing 10ug of transfection-ready, dried plasmid DNA (reconstitute with 100 ul of water).

- Reconstitution Method:**
1. Centrifuge at 5,000xg for 5min.
 2. Carefully open the tube and add 100ul of sterile water to dissolve the DNA.
 3. Close the tube and incubate for 10 minutes at room temperature.
 4. Briefly vortex the tube and then do a quick spin (less than 5000xg) to concentrate the liquid at the bottom.
 5. Store the suspended plasmid at -20°C. The DNA is stable for at least one year from date of shipping when stored at -20°C.

Note: Plasmids are not sterile. For experiments where strict sterility is required, filtration with 0.22um filter is required.

RefSeq: [NM_014352.4](#)

RefSeq Size: 3013 bp

RefSeq ORF: 1311 bp

Locus ID: 25833

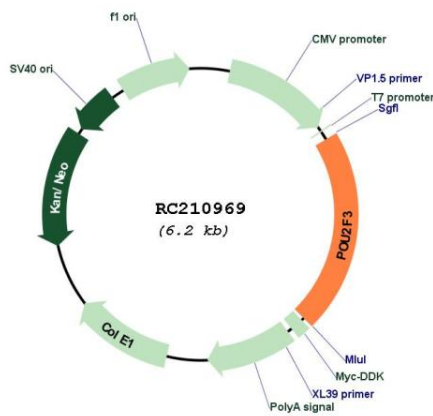
UniProt ID: [Q9UK19](#)

Cytogenetics: 11q23.3

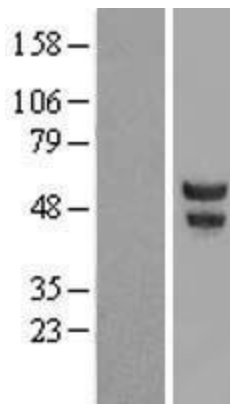
MW: 47.4 kDa

Gene Summary: This gene encodes a member of the POU domain family of transcription factors. POU domain transcription factors bind to a specific octamer DNA motif and regulate cell type-specific differentiation pathways. The encoded protein is primarily expressed in the epidermis, and plays a critical role in keratinocyte proliferation and differentiation. The encoded protein is also a candidate tumor suppressor protein, and aberrant promoter methylation of this gene may play a role in cervical cancer. Alternatively spliced transcript variants encoding multiple isoforms have been observed for this gene. [provided by RefSeq, Sep 2011]

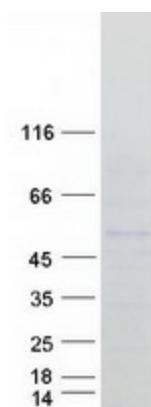
Product images:



Circular map for RC210969



Western blot validation of overexpression lysate (Cat# [LY415336]) using anti-DDK antibody (Cat# [TA50011-100]). Left: Cell lysates from untransfected HEK293T cells; Right: Cell lysates from HEK293T cells transfected with RC210969 using transfection reagent MegaTran 2.0 (Cat# [TT210002]).



Coomassie blue staining of purified POU2F3 protein (Cat# [TP310969]). The protein was produced from HEK293T cells transfected with POU2F3 cDNA clone (Cat# RC210969) using MegaTran 2.0 (Cat# [TT210002]).