

Product datasheet for RC210968

INSL5 (NM_005478) Human Tagged ORF Clone

Product data:

Product Type: Expression Plasmids
Product Name: INSL5 (NM_005478) Human Tagged ORF Clone
Tag: Myc-DDK
Symbol: INSL5
Synonyms: PRO182; UNQ156
Mammalian Cell Selection: Neomycin
Vector: pCMV6-Entry (PS100001)
E. coli Selection: Kanamycin (25 ug/mL)
ORF Nucleotide Sequence: >RC210968 ORF sequence
Red=Cloning site Blue=ORF Green=Tags(s)

TTTTGTAATACGACTCACTATAGGGCGGCCGGAATTCGTCGACTGGATCCGGTACCGAGGAGATCTGCC
GCC**CGATCGCC**

ATGAAGGGCTCCATTTTCACTCTGTTTTATTCTCTGTCCTATTTGCCATCTCAGAAGTGCGGAGCAAGG
AGTCTGTGAGACTCTGTGGCTAGAATACATACGGACAGTCATCTATATCTGTGCTAGCTCCAGGTGGAG
AAGGCATCTGGAGGGGATCCCTCAAGCTCAGCAAGCTGAGACAGGAACTCCTTCCAGCTCCACATAAA
CGTGAGTTTTCTGAGGAAAATCCAGCGCAAACCTTCCGAAGGTGGATGCCTCAGGGGAAGACCGTCTTT
GGGTGGACAGATGCCACTGAAGAGCTTGGAAAGTCAAAGAAGCATTCAAGTGTCAAGACAAGATTT
ACAAACTTTGTGTGCACTGATGGCTGTCCATGACTGATTTGAGTGCTCTTTGC

ACGCGTACGCGGCCGCTCGAGCAGAACTCATCTCAGAAGAGGATCTGGCAGCAAATGATATCCTGGATT
ACAAGGATGACGACGATAAGGTTTAA

Protein Sequence: >RC210968 protein sequence
Red=Cloning site Green=Tags(s)

MKGSIFTLFLFSVLFVFAISEVRSKESVRLCGLEYIRTVIYICASSRWRHLEGIPQAQAETGNSFQLPHK
REFSEENPAQNLPKVDASGEDRLWGGQMPTEELWKSCHKSVMSRQDLQTLCCDTGCSMTDLALC

TRTRPLEQKLISEEDLAANDILDYKDDDDKV

Chromatograms: https://cdn.origene.com/chromatograms/mk6371_a09.zip

Restriction Sites: SgfI-MluI



[View online »](#)

Cloning Scheme:


ACCN: NM_005478

ORF Size: 405 bp

OTI Disclaimer: The molecular sequence of this clone aligns with the gene accession number as a point of reference only. However, individual transcript sequences of the same gene can differ through naturally occurring variations (e.g. polymorphisms), each with its own valid existence. This clone is substantially in agreement with the reference, but a complete review of all prevailing variants is recommended prior to use. [More info](#)

OTI Annotation: This clone was engineered to express the complete ORF with an expression tag. Expression varies depending on the nature of the gene.

Components: The ORF clone is ion-exchange column purified and shipped in a 2D barcoded Matrix tube containing 10ug of transfection-ready, dried plasmid DNA (reconstitute with 100 ul of water).

- Reconstitution Method:**
1. Centrifuge at 5,000xg for 5min.
 2. Carefully open the tube and add 100ul of sterile water to dissolve the DNA.
 3. Close the tube and incubate for 10 minutes at room temperature.
 4. Briefly vortex the tube and then do a quick spin (less than 5000xg) to concentrate the liquid at the bottom.
 5. Store the suspended plasmid at -20°C. The DNA is stable for at least one year from date of shipping when stored at -20°C.

Note: Plasmids are not sterile. For experiments where strict sterility is required, filtration with 0.22um filter is required.

RefSeq: [NM_005478.2](#)

RefSeq Size: 718 bp

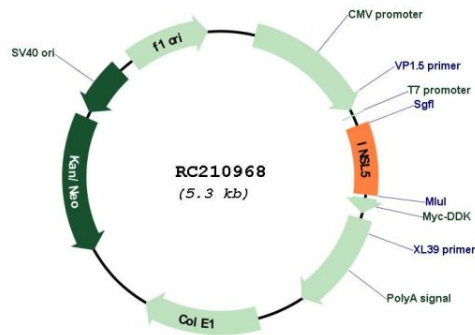
RefSeq ORF: 408 bp

Locus ID: 10022
UniProt ID: [Q9Y5Q6](#)
Cytogenetics: 1p31.3

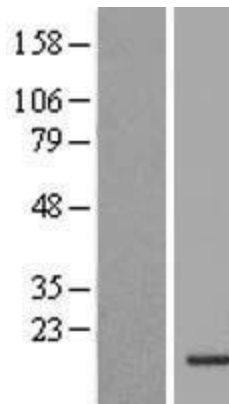
Protein Families: Secreted Protein
MW: 15.3 kDa

Gene Summary: The protein encoded by this gene contains a classical signature of the insulin superfamily and is highly similar to relaxin 3 (RLN3/INSL7). [provided by RefSeq, Jul 2008]

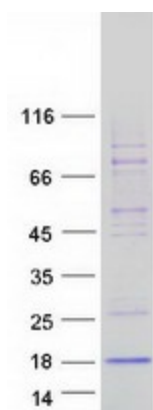
Product images:



Circular map for RC210968



Western blot validation of overexpression lysate (Cat# [LY417280]) using anti-DDK antibody (Cat# [TA50011-100]). Left: Cell lysates from untransfected HEK293T cells; Right: Cell lysates from HEK293T cells transfected with RC210968 using transfection reagent MegaTran 2.0 (Cat# [TT210002]).



Coomassie blue staining of purified INSL5 protein (Cat# [TP310968]). The protein was produced from HEK293T cells transfected with INSL5 cDNA clone (Cat# RC210968) using MegaTran 2.0 (Cat# [TT210002]).