

## Product datasheet for **RC210967**

### **MYZAP (NM\_001018100) Human Tagged ORF Clone**

#### **Product data:**

Product Type:	Expression Plasmids
Product Name:	MYZAP (NM_001018100) Human Tagged ORF Clone
Tag:	Myc-DDK
Symbol:	MYZAP
Synonyms:	GCOM1; Gup; MYOZAP
Mammalian Cell Selection:	Neomycin
Vector:	pCMV6-Entry (PS100001)
E. coli Selection:	Kanamycin (25 ug/mL)



[View online »](#)

**ORF Nucleotide Sequence:**

>RC210967 ORF sequence  
 Red=Cloning site Blue=ORF Green=Tags(s)

TTTTGTAATACGACTCACTATAGGGCGGCCGGGAATTCGTCGACTGGATCCGGTACCGAGGAGATCTGCC  
 GCC**CGCATCGCC**

ATGCTGCGCTCCACGTCCACGGTACCCTGCTCTCGGGCGGCCGCCAGGACGCCCGGGCGCCAGCA  
 GGAGGGCAAATGTTTGCAGACTACGGCTGACCGTACCTCCTGAGAGTCCAGTTCTCTGAGCAATGTGAAAA  
 GAAGATTGAGAGAAAAGAGCAGCTTCTTACCTGAGCAATGGAGAACCCTACCAGGAACTTCCTCAGGGT  
 GTTGTTTATGGTGTGGTGCAGATCAGATCAAAATCAGCAGAAAAGAAATGGTGGTGTATGGGTGGTCCA  
 CCAGTCAGCTGAAAGAAGAGATGAACTACATCAAAGATGTGAGAGCCACTTTGGAAAAGGTGAGAAAAGCG  
 AATGTATGGAGACTATGATGAGATGAGACAGAAGATTCGACAGCTCACCCAGGAACTATCAGTTTCCCAT  
 GCTCAGCAGGAGTATCTGGAGAATCACATCCAACCCAGTCGTCTGCCCTGGATCGTTTTAATGCCATGA  
 ACTCAGCCTTGGCATCAGATTCCATTGGCCTGCAGAAAACCTCGTGGATGTGACTTTGGAAAACAGCAA  
 CATTAAAGGATCAAATCAGAAATCTGCAGCAGACGTATGAAGCATCCATGGACAAGCTGAGGGAAAAGCAG  
 AGGCAGTTGGAGGTAGCGCAAGTTGAAAACCAGCTGCTAAAAATGAAGGTGGAATCGTCCCAAGAAGCCA  
 ATGCTGAGGTGATGCGAGAGATGACCAAGAAGCTGTACAGCCAGTATGAGGAGAAGCTGCAGGAAGAACA  
 GAGGAAGCACAGTCTGAGAAGGAGGCTCTTTGGAAAGAAACCAATAGTTTTCTGAAAGCGATTGAAGAA  
 GCCAATAAAAAGATGCAAGCAGCAGAGATCAGCCTAGAGGAGAAAAGACCAGAGGATCGGGGAGCTGGACA  
 GGCTGATTGAGCGCATGGAAAAGGAACGTCATCAACTGCAACTTCAACTCCTAGAACATGAAACAGAAAT  
 GTCTGGGAGTTAACTGATTCTGACAAGGAAAGGTATCAGCAGTTGGAGGAGGCATCAGCCAGCCTCCGT  
 GAGCGGATCAGACACCTAGATGACATGGTGCATTGCCAGCAGAAGAAAGTCAAGCAGATGGTCGAGGAGA  
 TTGAATCATTAAAGAAAAGTTGCAACAGAAAACAGCTCTTAATACTGCAGCTTTTAGAAAAGATATCTTT  
 CTTAGAAGGAGAGAATAATGAACTACAAAAGCAGTTGGACTATTTAACAGAAAACCCAGGCCAAGACCGAA  
 GTGAAAACCAGAGAGATAGGAGTGGGCTGTGATCTTCTACCCAGCCAAAACAGGCAGGACTCGTGAATTG  
 TGATGCCTTCTAGGAACTACACCCATACACAAGAGTCTGGAGTTAACCATGAAGAAAACCTCTGACT

**ACGCGT**ACGCGGCCGCTCGAGCAGAAACTCATCTCAGAAGAGGATCTGGCAGCAAATGATATCCTGGATT  
 ACAAGGATGACGACGATAAGGTTTAA

**Protein Sequence:**

>RC210967 protein sequence  
 Red=Cloning site Green=Tags(s)

MLRSTSTVTLSSGGAARTPGAPSRANVCRRLRTPPESPVPEQCEKKIERKEQLLDLSNGEPTKLPQG  
 VVYGVVRRSDQNQQKEMVVYGWSTSQLKEEMNYIKDVRATLEKVRKRMVGDYDEMQRKIRQLTQELSVSH  
 AQQEYLENHIQTQSSALDRFNAMNSALASDSIGLQKTLVDVTLENSNIKDQIRNLQQTYEASMDKLRKQ  
 RQLEVAQVENQLLKMVVESSQEAANAEMREMTKKLYSQYEEKLQEEQRKHSAEKEALLEETNSFLKAIIE  
 ANKKMQAAEISLEEKDQRIQELDRLIERMEKERHQLQLLLEHETEMSGELTDSKERYQQLEEASASLR  
 ERIRHLDDMVHCQKKVKQMVVEIESLKKKLQKQLLILQLEKISFLEGENNELQSRLDYLTETQAKTE  
 VETREIGVGDLLPSQTGRTREIVMPSRNYTPYTRVLELTMKKTLL

**TR**TRPLEQKLISEEDLAANDILDYKDDDDKV

**Chromatograms:**

[https://cdn.origene.com/chromatograms/mk6591\\_a08.zip](https://cdn.origene.com/chromatograms/mk6591_a08.zip)

**Restriction Sites:**

SgfI-MluI

**Cloning Scheme:**


**ACCN:** NM\_001018100

**ORF Size:** 1398 bp

**OTI Disclaimer:** The molecular sequence of this clone aligns with the gene accession number as a point of reference only. However, individual transcript sequences of the same gene can differ through naturally occurring variations (e.g. polymorphisms), each with its own valid existence. This clone is substantially in agreement with the reference, but a complete review of all prevailing variants is recommended prior to use. [More info](#)

**OTI Annotation:** This clone was engineered to express the complete ORF with an expression tag. Expression varies depending on the nature of the gene.

**Components:** The ORF clone is ion-exchange column purified and shipped in a 2D barcoded Matrix tube containing 10ug of transfection-ready, dried plasmid DNA (reconstitute with 100 ul of water).

**Reconstitution Method:**

1. Centrifuge at 5,000xg for 5min.
2. Carefully open the tube and add 100ul of sterile water to dissolve the DNA.
3. Close the tube and incubate for 10 minutes at room temperature.
4. Briefly vortex the tube and then do a quick spin (less than 5000xg) to concentrate the liquid at the bottom.
5. Store the suspended plasmid at -20°C. The DNA is stable for at least one year from date of shipping when stored at -20°C.

**Note:** Plasmids are not sterile. For experiments where strict sterility is required, filtration with 0.22um filter is required.

**RefSeq:** [NM\\_001018100.5](#)

**RefSeq Size:** 2408 bp

**RefSeq ORF:** 1401 bp

**Locus ID:** 100820829

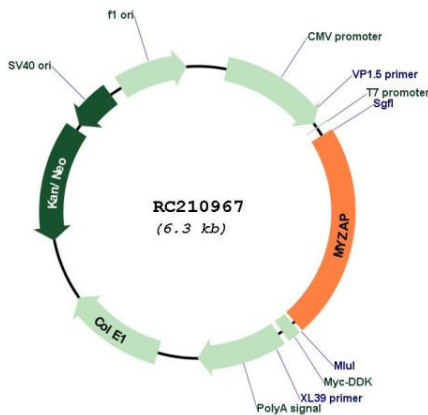
UniProt ID: [POCAP1](#)

Cytogenetics: 15q21.3

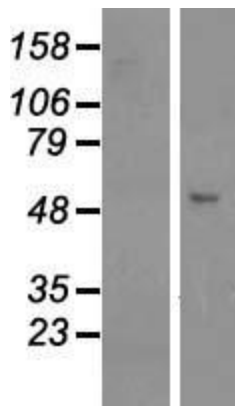
MW: 54.2 kDa

**Gene Summary:** This gene encodes a protein that is abundantly expressed in cardiac tissue. The encoded protein localizes to intercalated discs in cardiomyocytes and functions as an activator of Rho-dependent serum-response factor signaling. Alternative splicing results in multiple transcript variants. Readthrough transcription also exists between this gene and the neighboring downstream gene POLR2M (polymerase (RNA) II (DNA directed) polypeptide M) and is represented with GeneID: 145781. [provided by RefSeq, Mar 2014]

**Product images:**



Circular map for RC210967



Western blot validation of overexpression lysate (Cat# [LY422651]) using anti-DDK antibody (Cat# [TA50011-100]). Left: Cell lysates from untransfected HEK293T cells; Right: Cell lysates from HEK293T cells transfected with RC210967 using transfection reagent MegaTran 2.0 (Cat# [TT210002]).