

Product datasheet for **RC210960**

ZNF50 (ZSCAN22) (NM_181846) Human Tagged ORF Clone

Product data:

Product Type:	Expression Plasmids
Product Name:	ZNF50 (ZSCAN22) (NM_181846) Human Tagged ORF Clone
Tag:	Myc-DDK
Symbol:	ZNF50
Synonyms:	HKR2; ZNF50
Mammalian Cell Selection:	Neomycin
Vector:	pCMV6-Entry (PS100001)
E. coli Selection:	Kanamycin (25 ug/mL)



[View online »](#)

ORF Nucleotide Sequence:

>RC210960 ORF sequence
 Red=Cloning site Blue=ORF Green=Tags(s)

TTTTGTAATACGACTCACTATAGGGCGGCCGGAATTCGTCGACTGGATCCGGTACCGAGGAGATCTGCC
 GCC**CGGATCGCC**

ATGGCCATCCCCAAGCACTCCCTGAGCCAGTGCCGTGGGAAGAGGACAGCTTCCTCAAGTGAAGTGG
 AGGAGGAAGAGGAAGCCAGCCTCTCCAGGGCGGAGAATCCAGCCATGACCACATTGCTCACTCTGAGGC
 TGCACGCCTGCGCTTCCGGCACTTCCGCTATGAGGAGGCATCTGGTCCACACGAGGCCCTGGCCACCTC
 CGAGCGCTGTGCTGTCAGTGGCTGCAGCCCGAGGCGCACTCCAAGGAGCAGATACTGGAGCTGCTGGTGC
 TGGAGCAGTTCCTGGGTGCGCTGCCCCAGAGATCCAAGCCTGGGTGGGAGCCAGAGTCCAAGAGCGG
 AGAGGAAGCCGCTGTGCTGGTGGAGGATCTGACTCAGGTGCTGGACAAGAGAGGATGGGATCCAGGAGCC
 GAGCCACAGAGGCAAGCTGCAACAGAGTGACCTGGGAGAGTCAGAGCCATCAATGCTCACTGAGACCC
 TCATGGGAGGTGTTCCCTTGGACCCGCTTTGTCAAGGCATGTGAACCTGAGGGCAGCTCAGAGAGGTC
 TGGACTATCAGGGGAGATCTGGACAAAGTCTGTACCCAACAGATCCACTCAAGAAAATTCAGGGCCT
 TACAAGGATGTCCCACAGACCAGCGTGGCCGTGAATCTGGTGCCTCGAGGAACAGTTCTAGTGCCTGGC
 CAAACCTCACCTCCAAGAGAAGCCTCCTTCAGAAACAATTTGATCTGGTGGATGCTTATGGGACAGA
 GCCTCCATACACCTACTCAGGAAGAGGTCTCCAAGTGTGCGAGTGTAGGAAGATGTTCCAGAGTGTCT
 TCGGCGCTCGAGGCACACCAGAAGCCATTCTCGGAAGACCCATATGCCTGCAGCGAGTGTGGGAAAG
 CTTTACGCCGAGCACTCACCTCGCCAGCACCAGGTTGTCCACACAGGGGCGAAGCCCCATGAGTGTA
 GGAATGTGGGAAGGCCTTACGCCAGTCAACCCACTGACTCAGCACCAAGGATTCATACTGGAGAGAAA
 CCCTACAAATGTGGGAATGTGGTAAAACCTTACGCCCGCAGCACTCACCTCACCCAGCACCAGCGGTGC
 ACACGGGGGAGCGGCCCTACGAGTGTGACGCGTGTGGGAAAGCCTTACGCCAGAGCAGCACCTGACTCA
 ACACAGCGCATCCACACCGGGGAGAAGCCCTACAAGTGTGACGCGTGTGGCCGAGCCTTACGCGACTGC
 TCAGCCCTGATCCGACATCTGAGAATCCACTCTGGAGAGAAGCCATATCAGTGTAAAGTTTGTCCGAAGG
 CCTTTGCACAGAGCTCCTCCCTCATTGAGCACCAGAGGATCCACACGGGAGAGAAGCCTTATAAGTGCAG
 CGACTGTGGGAAGGCCTTCACTCGTAGCTCAGCCCTGATGGTTCCTTCCGGATCCACATCACGGTGTCTG
 CAA

AG**CGGACCG**ACGCGTACGCGGCCGCTCGAGCAGAAACTCATCTCAGAAGAGGATCTGGCAGCAAATGATATCC
 TGGATTACAAGGATGACGACGATAAGGTTTAA

Protein Sequence:

>RC210960 protein sequence
 Red=Cloning site Green=Tags(s)

MAIPKHSLSPPVWEEDSFLQVKVEEEEEASLSQGGESSHDHIAHSEAARLRFHFYEEASGPHEALHL
 RALCCQWLQPEAHSKEQILELLVLEQFLGALPPEIQAWVGAQSPKSGEEAAVLVEDLTQVLDKRGWDPGA
 EPTASCKQSDLGESEPSNVETLMGGVSLGPAFVKACEPEGSSERSGLSGEIWTKSVTQQIHFKKTSGP
 YKDVPDQQRGREGSASRNSSSAWPNLTSQEKPPSEDKFDLVDAYGTEPPYTYSGKRSSKRECRKMFQSA
 SALEAHQKTHSRKTPYACSECGKAFSRSTHLAQHQVVHTGAKPHECKEKGKAFSRVTHLTQHQRHTGK
 PYKCGECGKTFSRSTHLTQHQRVHTGERPYECDACGKAFSQSTHLTQHQRHTGKPYKCDACGRAFSDC
 SALIRHLRIHSGEKPYQCKVCPKAFQSSSLIEHQRIHTGKPYKCDACGKAFSRSSALMVHLRIHITVL
 Q

SGPTRTRPLEQKLISEEDLAANDILDYKDDDDKV

Chromatograms:

https://cdn.origene.com/chromatograms/mk6621_b07.zip

Restriction Sites:

Sgfl-RsrII

Cloning Scheme:


ACCN: NM_181846

ORF Size: 1473 bp

OTI Disclaimer: The molecular sequence of this clone aligns with the gene accession number as a point of reference only. However, individual transcript sequences of the same gene can differ through naturally occurring variations (e.g. polymorphisms), each with its own valid existence. This clone is substantially in agreement with the reference, but a complete review of all prevailing variants is recommended prior to use. [More info](#)

OTI Annotation: This clone was engineered to express the complete ORF with an expression tag. Expression varies depending on the nature of the gene.

Components: The ORF clone is ion-exchange column purified and shipped in a 2D barcoded Matrix tube containing 10ug of transfection-ready, dried plasmid DNA (reconstitute with 100 ul of water).

Reconstitution Method:

1. Centrifuge at 5,000xg for 5min.
2. Carefully open the tube and add 100ul of sterile water to dissolve the DNA.
3. Close the tube and incubate for 10 minutes at room temperature.
4. Briefly vortex the tube and then do a quick spin (less than 5000xg) to concentrate the liquid at the bottom.
5. Store the suspended plasmid at -20°C. The DNA is stable for at least one year from date of shipping when stored at -20°C.

Note: Plasmids are not sterile. For experiments where strict sterility is required, filtration with 0.22um filter is required.

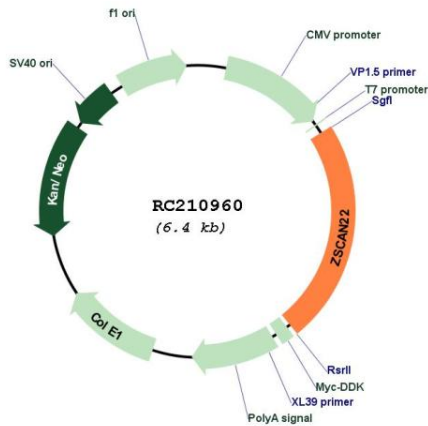
RefSeq: [NM_181846.3](#)

RefSeq Size: 4643 bp

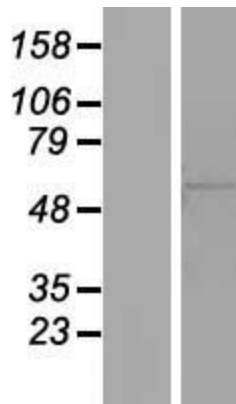
RefSeq ORF: 1476 bp

Locus ID: 342945

UniProt ID: [P10073](#)
Cytogenetics: 19q13.43
Protein Families: Druggable Genome
MW: 54.6 kDa
Gene Summary: May be involved in transcriptional regulation.[UniProtKB/Swiss-Prot Function]

Product images:


Circular map for RC210960



Western blot validation of overexpression lysate (Cat# [LY405553]) using anti-DDK antibody (Cat# [TA50011-100]). Left: Cell lysates from untransfected HEK293T cells; Right: Cell lysates from HEK293T cells transfected with RC210960 using transfection reagent MegaTran 2.0 (Cat# [TT210002]).