

Product datasheet for **RC210950**

PMS2L3 (NM_005395) Human Tagged ORF Clone

Product data:

Product Type:	Expression Plasmids
Product Name:	PMS2L3 (NM_005395) Human Tagged ORF Clone
Tag:	Myc-DDK
Symbol:	PMS2L3
Synonyms:	MGC126647; PMS2L9; PMS5; PMSR3; postmeiotic segregation increased 2-like 3; postmeiotic segregation increased 2-like 9
Mammalian Cell Selection:	Neomycin
Vector:	pCMV6-Entry (PS100001)
E. coli Selection:	Kanamycin (25 ug/mL)
ORF Nucleotide Sequence:	>RC210950 ORF sequence Red=Cloning site Blue=ORF Green=Tags(s)

TTTTGTAATACGACTCACTATAGGGCGGCCGGAATTCGTCGACTGGATCCGGTACCGAGGAGATCTGCC
 GCC**CGGATCGCC**

ATGAACACATTGCAGGGGCCAGTGTCATTCAAAGATGTGGCTGTGGATTTCACCCAGGAGGAGTGGCGGC
 AACTGGACCCTGATGAGAAGATAGCATACGGGGATGTGATGTTGGAGAACTACAGCCATCTAGTTTCTGT
 GGGGTATGATTATACCAAGCCAAACATCATCATGGAGTGGAGGTGAAGGAAGTGGAGCAGGGAGAGGAG
 CCGTGGATAATGGAAGGTGAATTTCCATGTCAACATAGTCCAGAACCTGCTAAGGCCATCAAACCTATTG
 ATCGGAAGTCAGTCCATCAGATTTGCTCTGGGCCAGTGGTACTGAGTCTAAGCACTGCAGTGAAGGAGTT
 AGTAGAAAACAGTCTGGATGCTGGTGCCACTAATATTGATCTAAAGCTTAAGGACTATGGAGTGGATCTC
 ATTGAAGTTTCAGACAATGGATGTGGGGTAGAAGAAGAAAACTTGAAGGCTTAACGATGTACCATTTC
 TACCTGCCACGCGTCGG

AG**CGGACCG**ACGCGTACGCGGCCGCTCGAGCAGAACTCATCTCAGAAGAGGATCTGGCAGCAAATGATATCC
 TGGATTACAAGGATGACGACGATAAGGTTTAA

Protein Sequence:	>RC210950 protein sequence Red=Cloning site Green=Tags(s)
-------------------	--

MNTLQGPVSFKDVAVDFTQEEWRQLDPDEKIAYGDMLENYSHLVSVGYDYHQAKHHHGVEVKEVEQGEE
 PWIMEGEFPCQHSPEPAKAIKPIDRKSVHQICSGPVVLSLSTAVKELVENS LDAGATNIDLKLDYGVDL
 IEVSDNGCGVEENFEGLTMSFPLPATRR

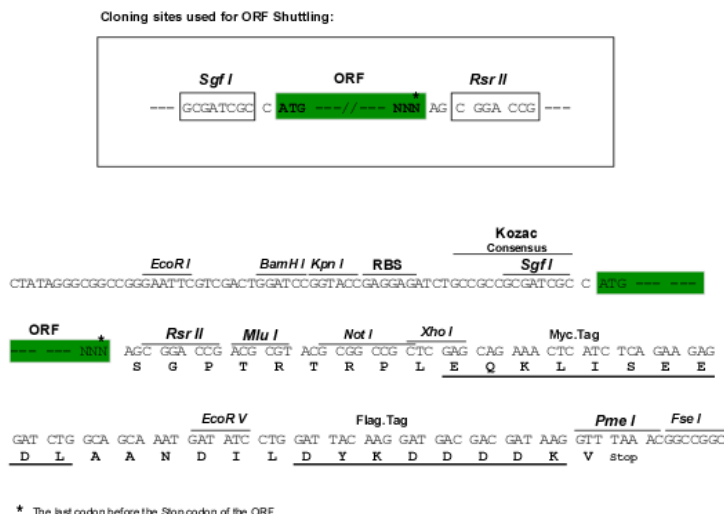
SGPTRTRPLEQKLISEEDLAANDILDYKDDDDKV


[View online »](#)

Chromatograms: https://cdn.origene.com/chromatograms/mk6616_e02.zip

Restriction Sites: SgfI-RsrII

Cloning Scheme:



ACCN: NM_005395

ORF Size: 507 bp

OTI Disclaimer: The molecular sequence of this clone aligns with the gene accession number as a point of reference only. However, individual transcript sequences of the same gene can differ through naturally occurring variations (e.g. polymorphisms), each with its own valid existence. This clone is substantially in agreement with the reference, but a complete review of all prevailing variants is recommended prior to use. [More info](#)

OTI Annotation: This clone was engineered to express the complete ORF with an expression tag. Expression varies depending on the nature of the gene.

Components: The ORF clone is ion-exchange column purified and shipped in a 2D barcoded Matrix tube containing 10ug of transfection-ready, dried plasmid DNA (reconstitute with 100 ul of water).

Reconstitution Method:

1. Centrifuge at 5,000xg for 5min.
2. Carefully open the tube and add 100ul of sterile water to dissolve the DNA.
3. Close the tube and incubate for 10 minutes at room temperature.
4. Briefly vortex the tube and then do a quick spin (less than 5000xg) to concentrate the liquid at the bottom.
5. Store the suspended plasmid at -20°C. The DNA is stable for at least one year from date of shipping when stored at -20°C.

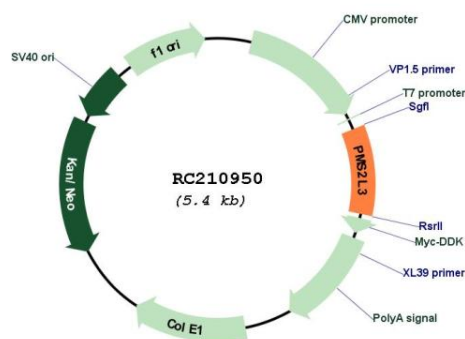
Note: Plasmids are not sterile. For experiments where strict sterility is required, filtration with 0.22um filter is required.

RefSeq: [NM_005395.2](#), [NP_005386.2](#)

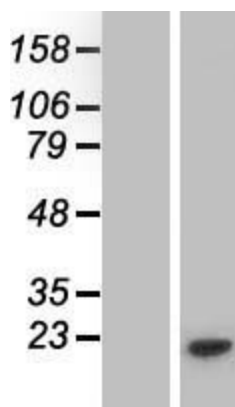
RefSeq Size: 1329 bp

RefSeq ORF:	509 bp
Locus ID:	5387
Cytogenetics:	7q11.23
Domains:	KRAB
Protein Families:	Transcription Factors
MW:	18.9 kDa

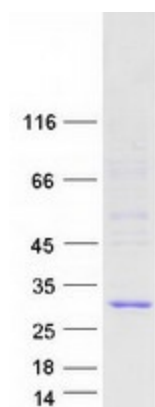
Product images:



Circular map for RC210950



Western blot validation of overexpression lysate (Cat# [LY417332]) using anti-DDK antibody (Cat# [TA50011-100]). Left: Cell lysates from untransfected HEK293T cells; Right: Cell lysates from HEK293T cells transfected with RC210950 using transfection reagent MegaTran 2.0 (Cat# [TT210002]).



Coomassie blue staining of purified PMS2L3 protein (Cat# [TP310950]). The protein was produced from HEK293T cells transfected with PMS2L3 cDNA clone (Cat# RC210950) using MegaTran 2.0 (Cat# [TT210002]).