

Product datasheet for **RC210942**

Resistin (RETN) (NM_020415) Human Tagged ORF Clone

Product data:

Product Type: Expression Plasmids
Product Name: Resistin (RETN) (NM_020415) Human Tagged ORF Clone
Tag: Myc-DDK
Symbol: Resistin
Synonyms: ADSF; FIZZ3; RETN1; RSTN; XCP1
Mammalian Cell Selection: Neomycin
Vector: pCMV6-Entry (PS100001)
E. coli Selection: Kanamycin (25 ug/mL)
ORF Nucleotide Sequence: >RC210942 ORF sequence
Red=Cloning site Blue=ORF Green=Tags(s)

TTTTGTAATACGACTCACTATAGGGCGCCGGGAATTCGTCGACTGGATCCGGTACCGAGGAGATCTGCC
GCC**CGATCGCC**

ATGAAAGCTCTGTCTCCTCCTCCTCCCTGTCCTGGGGCTGTTGGTGTCTAGCAAGACCCTGTGCTCCA
TGGGAAGAAGCCATCAATGAGAGGATCCAGGAGGTCGCCGGCTCCCTAATATTTAGGGCAATAAGCAGCAT
TGGCCTGGAGTCCAGAGCGTCACCTCCAGGGGGACCTGGCTACTTGCCCCGAGGCTTCGCCGTACC
GGCTGCACTTGTGGCTCCGCCTGTGGCTCGTGGGATGTGCGCGCCGAGACCACATGCTCACTGCCAGTGCC
CGGGCATGGACTGGACCGGAGCGCGCTGCTGTCGTGTGCAGCCC

ACGCGTACGCGGCCGCTCGAGCAGAAACTCATCTCAGAAGAGGATCTGGCAGCAAATGATATCCTGGATT
ACAAGGATGACGACGATAAGGTTTAA

Protein Sequence: >RC210942 protein sequence
Red=Cloning site Green=Tags(s)
MKALCLLLLPLVGLLVSSKTLCSMEEAINERIQEVAGSLIFRAISSIGLECSVTSRGLATCPRGFAVT
GCTCGSACGSWDVRAETTCHCQCAGMDWTGARCCRVQP

TRTRPLEQKLISEEDLAANDILDYKDDDDKV

Chromatograms: https://cdn.origene.com/chromatograms/mk6008_a05.zip

Restriction Sites: Sgfl-Mlul



[View online »](#)

Cloning Scheme:


ACCN: NM_020415

ORF Size: 324 bp

OTI Disclaimer: Due to the inherent nature of this plasmid, standard methods to replicate additional amounts of DNA in E. coli are highly likely to result in mutations and/or rearrangements. Therefore, OriGene does not guarantee the capability to replicate this plasmid DNA. Additional amounts of DNA can be purchased from OriGene with batch-specific, full-sequence verification at a reduced cost. Please contact our customer care team at custsupport@origene.com or by calling 301.340.3188 option 3 for pricing and delivery.

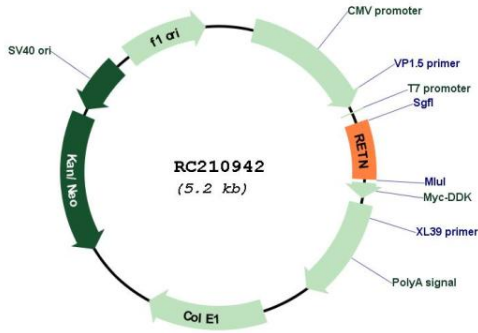
The molecular sequence of this clone aligns with the gene accession number as a point of reference only. However, individual transcript sequences of the same gene can differ through naturally occurring variations (e.g. polymorphisms), each with its own valid existence. This clone is substantially in agreement with the reference, but a complete review of all prevailing variants is recommended prior to use. [More info](#)

OTI Annotation: This clone was engineered to express the complete ORF with an expression tag. Expression varies depending on the nature of the gene.

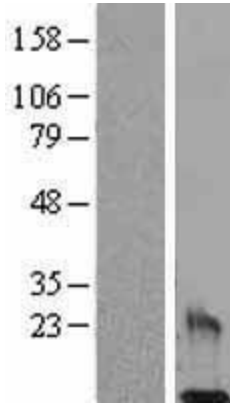
Components: The ORF clone is ion-exchange column purified and shipped in a 2D barcoded Matrix tube containing 10ug of transfection-ready, dried plasmid DNA (reconstitute with 100 ul of water).

Reconstitution Method:	<ol style="list-style-type: none">1. Centrifuge at 5,000xg for 5min.2. Carefully open the tube and add 100ul of sterile water to dissolve the DNA.3. Close the tube and incubate for 10 minutes at room temperature.4. Briefly vortex the tube and then do a quick spin (less than 5000xg) to concentrate the liquid at the bottom.5. Store the suspended plasmid at -20°C. The DNA is stable for at least one year from date of shipping when stored at -20°C.
Note:	Plasmids are not sterile. For experiments where strict sterility is required, filtration with 0.22um filter is required.
RefSeq:	NM_020415.4
RefSeq Size:	478 bp
RefSeq ORF:	327 bp
Locus ID:	56729
UniProt ID:	Q9HD89
Cytogenetics:	19p13.2
Protein Families:	Druggable Genome, Secreted Protein
MW:	11.4 kDa
Gene Summary:	This gene belongs to the family defined by the mouse resistin-like genes. The characteristic feature of this family is the C-terminal stretch of 10 cys residues with identical spacing. The mouse homolog of this protein is secreted by adipocytes, and may be the hormone potentially linking obesity to type II diabetes. The encoded protein also has an antimicrobial role in skin, displaying antibacterial activity against both Gram positive and Gram negative bacteria. Alternatively spliced transcript variants encoding the same protein have been found for this gene. [provided by RefSeq, Jul 2020]

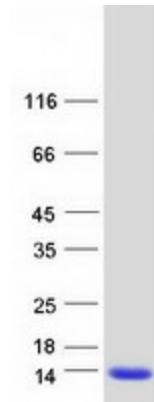
Product images:



Circular map for RC210942



Western blot validation of overexpression lysate (Cat# [LY402786]) using anti-DDK antibody (Cat# [TA50011-100]). Left: Cell lysates from untransfected HEK293T cells; Right: Cell lysates from HEK293T cells transfected with RC210942 using transfection reagent MegaTran 2.0 (Cat# [TT210002]).



Coomassie blue staining of purified RETN protein (Cat# [TP310942]). The protein was produced from HEK293T cells transfected with RETN cDNA clone (Cat# RC210942) using MegaTran 2.0 (Cat# [TT210002]).