

## Product datasheet for RC210941

### SDR O (SDR9C7) (NM\_148897) Human Tagged ORF Clone

#### Product data:

Product Type:	Expression Plasmids
Product Name:	SDR O (SDR9C7) (NM_148897) Human Tagged ORF Clone
Tag:	Myc-DDK
Symbol:	SDR O
Synonyms:	ARCI13; RDHS; SDR-O; SDRO
Mammalian Cell Selection:	Neomycin
Vector:	pCMV6-Entry (PS100001)
E. coli Selection:	Kanamycin (25 ug/mL)
ORF Nucleotide Sequence:	>RC210941 ORF sequence Red=Cloning site Blue=ORF Green=Tags(s)

TTTTGTAATACGACTCACTATAGGGCGGCCGGAATTCGTCGACTGGATCCGGTACCGAGGAGATCTGCC  
GCC**CGATCGCC**

ATGGCGGCCCTCACAGACCTCTCATTTATGTATCGCTGGTTCAAGAACTGCAATCTGGTTGGCAACCTCT  
CAGAGAAGTACGTCTTCATCACAGGCTGTGACTCTGGCTTCGGGAACCTGCTGGCCAAACAGCTGGTTGA  
TCGGGGCATGCAGGTGCTGGCTGCTTCTCACTGAGGAGGGATCCAGAACTTCAGCGGGATACCTCC  
TATCGGCTGCAGACCACCCTACTGGATGTCACCAAGAGCGAAAGCATCAAGCGGGCGGCCAGTGGTGA  
GGGACAAAGTGGGCGAACAAGGCCTCTGGGCCCTGGTGAACAATGCTGGTGTGGCCTGCCAGTGGTCC  
CAACGAATGGCTGACCAAGGATGACTTTGTGAAGGTGATTAATGTGAACCTGGTGGGACTGATCGAAGTG  
ACCTTACATGCTGCCATGGTCAAGAGAGCCCGGGCAGGGTGTCAACATGTCCAGCTCTGGTGGTCC  
GTGTGGCTGCTATTGGTGGTGGCTACTGCGTCTCCAAGTTTGGCGTTGAGGCCTTCTCTGACAGCATAAG  
GCGTGAGCTCTACTTTGGGGTAAAAGTCTGCATCATTGAGCCAGGGAACATCGGACAGCCATTCTC  
GGCAAGGAGAACCTGGAGTACGCATGCGAAAGCTTTGGGAGAGGCTGCCTCAGGAGACCCGGGACAGCT  
ACGGAGAGGATTATTTCCGCATCTATACTGACAAGTAAAAAACATAATGCAGGTGGCAGAGCCCAGAGT  
CAGAGATGTCATCAACAGCATGGAGCATGCTATTGTTCCCGGAGCCCTCGCATCCGCTACAACCCCTGCC  
CTGGATGCCAACTCCTACATCCCTCTGGCTAAGTTGCCACCCCTGTGACAGATTTATCCTAAGCC  
GGTACCTTCCAAGGCCAGCGGACAGTGTCT

**ACGCGT**ACGCGGCCGCTCGAGCAGAACTCATCTCAGAAGAGGATCTGGCAGCAATGATATCCTGGATT  
ACAAGGATGACGACGATAAGGTTTAA



[View online »](#)

**Protein Sequence:** >RC210941 protein sequence  
Red=Cloning site Green=Tags(s)

MAALTDLSFMYRWFKNCNLVGNLSEKYVFITGCDSGFGNLLAKQLVDRGMQVLAACFTEEGSQKLQRDTS  
 YRLQTTLLDVTKSESIKAAAQWVRDKVGEQGLWALVNNAGVGLPSGPNEWLTKDDFVKVINVLVGLIEV  
 TLHMLPMVKRARGRVNMSSSGGRVAVIGGGYCVSKFGVEAFSDSIRRELYYFGVKVCIIEPGNYRTAIL  
 GKENLESRMKRLWERLPQETRDSYGEDYFRIYTDKLNIMQVAEPRVRDVINSMEHAIVSRSPRIRYNPG  
 LDAKLLYIPLAKLPTVPTDFILSRYLPRPADSV

TRTRPLEQKLISEEDLAANDILDYKDDDDKV

**Chromatograms:** [https://cdn.origene.com/chromatograms/mk6383\\_h06.zip](https://cdn.origene.com/chromatograms/mk6383_h06.zip)

**Restriction Sites:** SgfI-MluI

**Cloning Scheme:**



**ACCN:** NM\_148897

**ORF Size:** 939 bp

**OTI Disclaimer:** The molecular sequence of this clone aligns with the gene accession number as a point of reference only. However, individual transcript sequences of the same gene can differ through naturally occurring variations (e.g. polymorphisms), each with its own valid existence. This clone is substantially in agreement with the reference, but a complete review of all prevailing variants is recommended prior to use. [More info](#)

**OTI Annotation:** This clone was engineered to express the complete ORF with an expression tag. Expression varies depending on the nature of the gene.

**Components:** The ORF clone is ion-exchange column purified and shipped in a 2D barcoded Matrix tube containing 10ug of transfection-ready, dried plasmid DNA (reconstitute with 100 ul of water).

**Reconstitution Method:**

1. Centrifuge at 5,000xg for 5min.
2. Carefully open the tube and add 100ul of sterile water to dissolve the DNA.
3. Close the tube and incubate for 10 minutes at room temperature.
4. Briefly vortex the tube and then do a quick spin (less than 5000xg) to concentrate the liquid at the bottom.
5. Store the suspended plasmid at -20°C. The DNA is stable for at least one year from date of shipping when stored at -20°C.

**RefSeq:** [NM\\_148897.3](#)

**RefSeq Size:** 1765 bp

**RefSeq ORF:** 942 bp

**Locus ID:** 121214

**UniProt ID:** [Q8NEX9](#)

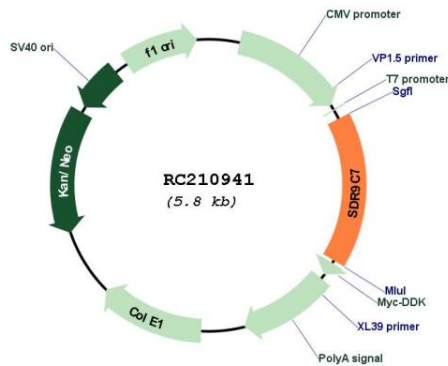
**Cytogenetics:** 12q13.3

**Protein Families:** Druggable Genome

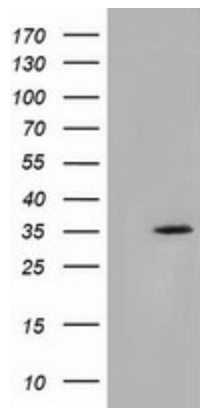
**MW:** 35.3 kDa

**Gene Summary:** This gene encodes a protein with similarity to the short-chain dehydrogenase/reductase (SDR) family but has not been shown to have retinoid or dehydrogenase activities. [provided by RefSeq, Apr 2010]

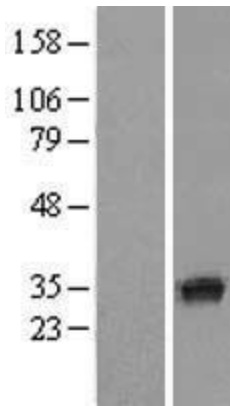
### Product images:



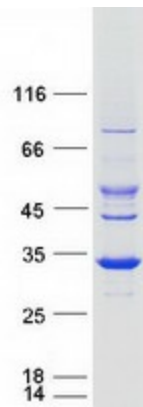
Circular map for RC210941



HEK293T cells were transfected with the pCMV6-ENTRY control (Cat# [PS100001], Left lane) or pCMV6-ENTRY SDR9C7 (Cat# RC210941, Right lane) cDNA for 48 hrs and lysed. Equivalent amounts of cell lysates (5 ug per lane) were separated by SDS-PAGE and immunoblotted with anti-SDR9C7 (Cat# [TA501723]). Positive lysates [LY407754] (100ug) and [LC407754] (20ug) can be purchased separately from OriGene.



Western blot validation of overexpression lysate (Cat# [LY407754]) using anti-DDK antibody (Cat# [TA50011-100]). Left: Cell lysates from untransfected HEK293T cells; Right: Cell lysates from HEK293T cells transfected with RC210941 using transfection reagent MegaTran 2.0 (Cat# [TT210002]).



Coomassie blue staining of purified SDR9C7 protein (Cat# [TP310941]). The protein was produced from HEK293T cells transfected with SDR9C7 cDNA clone (Cat# RC210941) using MegaTran 2.0 (Cat# [TT210002]).