

Product datasheet for **RC210939**

SP7 (NM_152860) Human Tagged ORF Clone

Product data:

Product Type:	Expression Plasmids
Product Name:	SP7 (NM_152860) Human Tagged ORF Clone
Tag:	Myc-DDK
Symbol:	SP7
Synonyms:	OI11; OI12; osterix; OSX
Mammalian Cell Selection:	Neomycin
Vector:	pCMV6-Entry (PS100001)
E. coli Selection:	Kanamycin (25 ug/mL)



[View online »](#)

ORF Nucleotide Sequence:

>RC210939 ORF sequence
 Red=Cloning site Blue=ORF Green=Tags(s)

TTTTGTAATACGACTCACTATAGGGCGGCCGGGAATTCGTCGACTGGATCCGGTACCGAGGAGATCTGCC
 GCC**CGGATCGCC**

ATGGCGTCTCCCTGCTTGGAGGGAAGTTCACTATGGCTCCAGTCCCCTGGCCATGCTGACGGCAGCGT
 GCAGCAAATTTGGTGGCTCTAGCCCTCTGCGGGACTCAACAACCTCTGGGCAAAGCAGGCACAAGAAGCC
 GACTCTGTGGGCACTGACCTTTTCAGCCTCCAAAACCATGGGGATGCTTATCCAGCCCCCTTTACAAGC
 ACTAATGGGCTCCTTTCACCTGCAGGCAGTCTCCAGCACCCACCTCAGGCTATGCTAATGATTACCCTC
 CCTTTCCACTCATTCCCTGGGCCACAGGCACCCAGGACCCTGGGCTACTAGTGCCCAAGGGGCACAG
 CTCTTCTGACTGTCTGCCAGTGTCTACACCTCTCTGGACATGACACACCCTATGGCTCCTGGTACAAG
 GCAGGCATCCATGCAGGCATTTACCAGGCCAGGCAACACTCCTACTCCATGGTGGGATATGCACCCTG
 GAGGCAACTGGCTAGGTGGTGGCAGGGCCAGGGTGATGGGCTGCAAGGGACACTGCCACAGGTCCAGC
 TCAGCCTCCACTGAACCCACAGCTGCCACCTACCCATCTGACTTTGCTCCCCTTAATCCAGCCCCCTAC
 CAGCTCCCACCTCTTGAACAGGGCCAGCATGTCTTGCCCAAGATGTCTATAAACCCAAGGCAG
 TGGGAAATAGTGGGCAGCTAGAAGGGAGTGGTGGAGCCAAACCCACGGGGTGCAAGCACTGGGGTAG
 TGGTGGATATGGGGCAGTGGGGCAGGGCGCTCCTCCTGCGACTGCCCTAATTGCCAGGAGCTAGAGCGG
 CTGGGAGCAGCAGCGCTGGGCTGCGGAAGAAGCCATCCACAGCTGCCACATCCCTGGCTGCGGAAGG
 TGTATGGCAAGGCTTCGCACCTGAAGGCCACTTGGCTGGCACACAGGGCAGAGGCCCTTCGTCTGCAA
 CTGGCTCTTCTGCGGCAAGAGGTTCACTCGTTCGGATGAGCTGGAGCGTCATGTGCGCACTCACACCCGG
 GAGAAGAAGTTCACCTGCCTGCTCTGCTCCAAGCGCTTACCCGAAGTGACCACCTGAGCAAACACCAGC
 GCACCCACGGAGAACCAGGCCCGGGTCCCCTCCAGTGGCCCAAGGAGCTGGGGGAGGGCCGACGAC
 GGGGGAAGAGGAGGCCAGTCAGACGCCCGACCTTCTGCCTCGCCAGCAACCCAGAGAAAGCCCTGGA
 GGCAGCCCTGAGCAGAGCAACTGCTGGAGATC

ACGCGTACGCGGCCGCTCGAGCAGAACTCATCTCAGAAGAGGATCTGGCAGCAAATGATATCCTGGATT
 ACAAGGATGACGACGATAAGGTTTAA

Protein Sequence:

>RC210939 protein sequence
 Red=Cloning site Green=Tags(s)

MASSLLEEVHYGSSPLAMLAACSKFGGSSPLRDSTTLGKAGTKKPYSVGSDLASAKTMGDAYPAPFTS
 TNGLLSPAGSPPAPTSGYANDYPPFSHSFPGPTGTQDPGLLVPKGHSSDCLPSVYTSLDMTHPYGWSYK
 AGIHAGISPGPGNTPTPWWDMHPGGNWLGGGQGDGLQGLTPTGPAQPPLNPQLPTYPSDFAPLNPAPY
 PAPHLLQPGPQHVLQDVYKPKAVGNLQLEGGGAKPPRGASTGGSGGYGGSGAGRSSDCPNQELER
 LGAAAAGLRKKPIHSHCHIPGCGKYYGKASHLKAHLRWHTGERPFVCNWLFCGKRFTRSDELERHVRTHTR
 EKKFTCLLCSKRFTRSDHLSKHQRTHGEPGPPPPSGPKELGEGRSTGEEESQTPRPSASPATPEKAPG
 GSPEQSNLLEI

TRTRPLEQKLISEEDLAANDILDYKDDDDKV

Chromatograms:

https://cdn.origene.com/chromatograms/mk6130_d07.zip

Restriction Sites:

Sgfl-Mlul

Cloning Scheme:


ACCN: NM_152860

ORF Size: 1293 bp

OTI Disclaimer: Due to the inherent nature of this plasmid, standard methods to replicate additional amounts of DNA in E. coli are highly likely to result in mutations and/or rearrangements. Therefore, OriGene does not guarantee the capability to replicate this plasmid DNA. Additional amounts of DNA can be purchased from OriGene with batch-specific, full-sequence verification at a reduced cost. Please contact our customer care team at custsupport@origene.com or by calling 301.340.3188 option 3 for pricing and delivery.

The molecular sequence of this clone aligns with the gene accession number as a point of reference only. However, individual transcript sequences of the same gene can differ through naturally occurring variations (e.g. polymorphisms), each with its own valid existence. This clone is substantially in agreement with the reference, but a complete review of all prevailing variants is recommended prior to use. [More info](#)

OTI Annotation: This clone was engineered to express the complete ORF with an expression tag. Expression varies depending on the nature of the gene.

Components: The ORF clone is ion-exchange column purified and shipped in a 2D barcoded Matrix tube containing 10ug of transfection-ready, dried plasmid DNA (reconstitute with 100 ul of water).

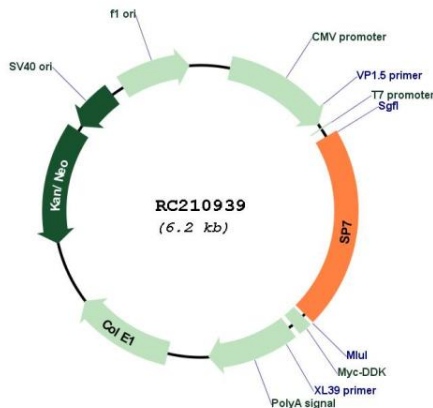
- Reconstitution Method:**
1. Centrifuge at 5,000xg for 5min.
 2. Carefully open the tube and add 100ul of sterile water to dissolve the DNA.
 3. Close the tube and incubate for 10 minutes at room temperature.
 4. Briefly vortex the tube and then do a quick spin (less than 5000xg) to concentrate the liquid at the bottom.
 5. Store the suspended plasmid at -20°C. The DNA is stable for at least one year from date of shipping when stored at -20°C.

RefSeq: [NM_152860.1](#), [NP_690599.1](#)

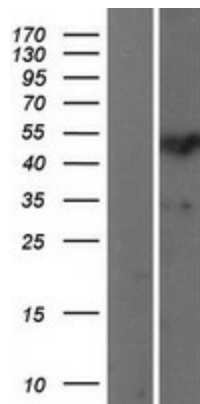
RefSeq Size: 2995 bp
 RefSeq ORF: 1296 bp
 Locus ID: 121340
 UniProt ID: [Q8TDD2](#)
 Cytogenetics: 12q13.13
 Protein Families: ES Cell Differentiation/IPS, Transcription Factors
 MW: 45 kDa

Gene Summary: This gene encodes a member of the Sp subfamily of Sp/XKLF transcription factors. Sp family proteins are sequence-specific DNA-binding proteins characterized by an amino-terminal trans-activation domain and three carboxy-terminal zinc finger motifs. This protein is a bone specific transcription factor and is required for osteoblast differentiation and bone formation. [provided by RefSeq, Jul 2010]

Product images:



Circular map for RC210939



Western blot validation of overexpression lysate (Cat# [LY403500]) using anti-DDK antibody (Cat# [TA50011-100]). Left: Cell lysates from untransfected HEK293T cells; Right: Cell lysates from HEK293T cells transfected with RC210939 using transfection reagent MegaTran 2.0 (Cat# [TT210002]).