

Product datasheet for **RC210934**

Pyrin (MEFV) (NM_000243) Human Tagged ORF Clone

Product data:

Product Type:	Expression Plasmids
Product Name:	Pyrin (MEFV) (NM_000243) Human Tagged ORF Clone
Tag:	Myc-DDK
Symbol:	Pyrin
Synonyms:	FMF; MEF; PAAND; TRIM20
Mammalian Cell Selection:	Neomycin
Vector:	pCMV6-Entry (PS100001)
E. coli Selection:	Kanamycin (25 ug/mL)



[View online »](#)

ORF Nucleotide Sequence:

>RC210934 representing NM_000243
 Red=Cloning site Blue=ORF Green=Tags(s)

TTTTGTAATACGACTCACTATAGGGCGGCCGGAATTCGTCGACTGGATCCGGTACCGAGGAGATCTGCC
 GCC**CGGATCGCC**

ATGGCTAAGACCCTAGTGACCATCTGCTGTCCACCCTGGAGGAGCTGGTGCCCTATGACTTCGAGAAGT
 TCAAGTTCAAGCTGCAGAACACCAGTGTGCAGAAGGAGCACTCCAGGATCCCCGGAGCCAGATCCAGAG
 AGCCAGGCCGGTGAAGATGGCCACTCTGCTGGTCACTACTATGGGGAAGAGTACGCCGTGCAGCTCACC
 CTGCAGGCTCTGCGGGCCATCAACCAGCGCTGCTGGCCGAGGAGCTCCACAGGGCAGCCATTAGGAAT
 ATTCCACACAAGAAAACGGCACAGACGATTCCGCAGCGTCCAGCTCCCTGGGGGAGAACAAGCCAGGAG
 CCTGAAGACTCCAGACCACCCGAGGGGAACGAGGGGAACGGCCCTCGGCCGTACGGGGCGGGGCTGCC
 AGCCTGCGGTGCAGCCAGCCGAGCCGGGAGGGGGCTGTGAGGAAGCCCTGAGCAAACGCAGAGAGA
 AGGCATCGGAGGGCTGGACGCGCAGGGCAAGCCTCGGACCCGGAGCCCGGCCCTGCCGGCGGGAGAAG
 CCCCAGCCCTGCAGGGCTAGAGGGGGCCAGGCCAGGTCCAGCTGCGCAGAAACGCCAGCTCCGCG
 GGGAGGCTGCAGGGGCTGGCGGGGGCGCCCCGGGGCAGAAGGAGTGCAGGCCCTTGAAGTGTACCTGC
 CCTCGGAAAGATGCGACCTAGAAGCCTTGAGGTACCATTTCTACAGGGGAGAAGGGCGCCCGCAATCC
 AGAAATTTCTCTGACTCTAGAGGAAAAGACAGCTGCGAATCTGGACTCGCAACAGAACCCCGGGCAAGG
 CCCACTCCGGATGGAGGGGCATCTGCGGACCTGAAGGAAGGCCCTGGAATCCAGAACATTCGGTACCCG
 GAAGGCCACCAGACCGCTGCGAGTCCCGGTTGCCACGCCAGGAAGGAGACCCAGTTGACGGTACCTG
 TGTGCGTATTCTGCAGCTTCCCGAGGCAGTTCTGGGCACCCCGAGCCCTCAGGCAGCCGCTCACCT
 GGCTGCCCCGGTGCCAGGACTCCCATGAAAGGAAGAGCCCGGAAGCCTAAGCCCCAGCCCTGCCAC
 AGTGTAAGCGCCACCTGAAGCAGGTCCAGCTGCTTCTGTGAGGATCAGCATGAGCCCATCTGCCCTCAT
 CTGCAGTCTGAGTCAGGAGCACCAAGGCCACCGGGTGCGCCCATTGAGGAGGTGCCCCTGGAACACAAG
 AAGAAAATTCAGAAGCAGCTGGAGCATCTGAAGAAGCTGAGAAAATCAGGGGAGGAGCAGCGATCCTATG
 GGGAGGAGAAGGCAGTGAGCTTTCTGAAACAACTGAAGCGCTGAAGCAGCGGGTGCAGAGGAAGCTGGA
 GCAGGTGTACTACTTCTGGAACAGCAGGAGCATTCTTTGTGGCCTCACTGGAGGACGTGGGCCAGATG
 GTTGGGCAGATCAGGAAGGCATATGACACCCGCTATCCAGGACATCGCCCTGCTCGACGCGTGATTG
 GGGAACTGGAGGCCAAGGAGTGCCAGTCAGAATGGAACTTCTGCAGGACATTGGAGACATCTTGCACAG
 GGCTAAGACAGTGCCTGTCCCTGAAAAGTGGACCACTCCTCAAGAGATAAAACAAAAGATCCAACCTCCT
 CACCAGAAGTCAGAGTTTGTGGAGAAGAGCACAAAGTACTTCTCAGAAACCTGCGTTCAGAAATGGAAA
 TGTTCAATGTTCCGGAGCTGATTGGCGCTCAGGCACATGCTGTTAATGTGATTCTGGATGCAGAAACCGC
 TTACCCCAACCTCATCTTCTCTGATGATCTGAAGAGTGTAGACTTGAAACAAGTGGGAGAGGCTGCCT
 GATGGCCCGCAAAGATTTGACAGCTGTATCATTGTTCTGGGCTCTCCGAGTTTCTCTCTGGCCCGGTT
 ACTGGGAGGTGGAGGTTGGAGACAAGACAGCATGGATCCTGGGAGCCTGCAAGACATCCATAAGCAGGAA
 AGGGAACATGACTCTGTCGCCAGAGAATGGCTACTGGGTGGTATAATGATGAAGGAAAATGAGTACCAG
 GCGTCCAGCGTCCCCCGACCCGCTGCTAATAAAGGAGCCTCCAAGCGTGTGGGCATCTTCGTGGACT
 ACAGAGTTGGAAGCATCTCCTTTTACAATGTGACAGCCAGATCCACATCTATACATTGCCAGCTGCTC
 TTTCTCTGGGCCCTTCAACCTATCTTCAGCCCTGGGACACGTGATGGAGGGAAGAACACAGCTCCTCTG
 ACTATCTGTCCAGTGGTGGTCAAGGGCCCTGAC

ACGCGTACGCGGCCGCTCGAGCAGAAACTCATCTCAGAAGAGGATCTGGCAGCAAATGATATCCTGGATT
 ACAAGGATGACGACGATAAGGTTTAA

Protein Sequence: >RC210934 representing NM_000243
 Red=Cloning site Green=Tags(s)

```

MAKTPSDHLLSTLEELVPYDFEKFKFLQNTSVQKEHSRIPRSQIQRARPVKMATLLVTYYGEEYAVQLT
LQVLRAINQRLLAEELHRAAIQEYSTQENGTDDSAASSSLGENKPRSLKTPDHPEGNEGNGPRPYGGGAA
SLRCSQPEAGRGLSRKPLSKRREKASEGLDAQGKPRTRSPALPGGRSPGPCRALEGGQAEVQLRRNASSA
GRLQGLAGGAPGQKECRPFVYLPSTGMRPRSLEVTISTGEEKAPANPEILLTLEEKTAANLDSATEPRAR
PTPDGGASADLKEGPGNPEHSVTGRPPDTAASPRCHAQEGDPVDGTCVRDSCSFPEAVSGHPQASGSRSP
GCPRCQDSHERKSPGSLSPQPLPQCKRHLKQVQLLFCEDHDEPICLICLSQEHQGHRVRIEEVALEHK
KKIQKQLEHLKLRKSGEEQRSYGEEKAVSFLKQTEALKQRVQRKLEQVYVFLEQQEHFFVASLEDVGM
VGQIRKAYDTRVSQDIALLDALIGELEAKECQSEWELLQDIGDILHRAKTVPVPEKWTTPQEIKQKIQLL
HQKSEFVEKSTKYFSETLRSEMEMFNPELIGAQAHAVNVILDAETAYPNLIFSDDLKSVRLGNKWERLP
DGPQRFDCIIVLGSPSFLSGRRYWEVEVGDKTAWILGACKTISRKGNMTPSPENGYWVIMMKENEYQ
ASSVPTRLLIKEPPKRVGIFVDYRVGSI SFYNV TARSHIYTFASCSFSGPLQPIFSPGTRDGGKNTAPL
TICPVGGQGPD
  
```

TRTRPLEQKLI SEEDLAANDILDYKDDDDKV

Restriction Sites: Sgfl-Mlul

Reconstitution Method:

1. Centrifuge at 5,000xg for 5min.
2. Carefully open the tube and add 100ul of sterile water to dissolve the DNA.
3. Close the tube and incubate for 10 minutes at room temperature.
4. Briefly vortex the tube and then do a quick spin (less than 5000xg) to concentrate the liquid at the bottom.
5. Store the suspended plasmid at -20°C. The DNA is stable for at least one year from date of shipping when stored at -20°C.

RefSeq: [NM_000243.3](#)

RefSeq Size: 3511 bp

RefSeq ORF: 2346 bp

Locus ID: 4210

UniProt ID: [O15553](#)

Cytogenetics: 16p13.3

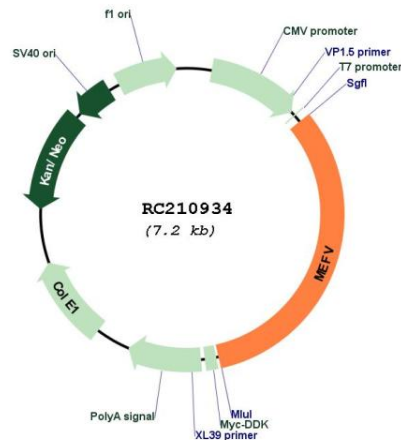
Protein Families: Druggable Genome

Protein Pathways: NOD-like receptor signaling pathway

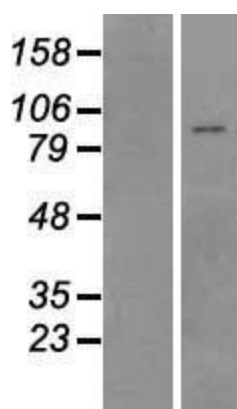
MW: 86.3 kDa

Gene Summary: This gene encodes a protein, also known as pyrin or marenostrin, that is an important modulator of innate immunity. Mutations in this gene are associated with Mediterranean fever, a hereditary periodic fever syndrome. [provided by RefSeq, Jul 2008]

Product images:



Circular map for RC210934



Western blot validation of overexpression lysate (Cat# [LY424850]) using anti-DDK antibody (Cat# [TA50011-100]). Left: Cell lysates from untransfected HEK293T cells; Right: Cell lysates from HEK293T cells transfected with RC210934 using transfection reagent MegaTran 2.0 (Cat# [TT210002]).