

## Product datasheet for **RC210931L4V**

### Axin 2 (AXIN2) (NM\_004655) Human Tagged ORF Clone Lentiviral Particle

#### Product data:

Product Type:	Lentiviral Particles
Product Name:	Axin 2 (AXIN2) (NM_004655) Human Tagged ORF Clone Lentiviral Particle
Symbol:	Axin 2
Synonyms:	AXIL; ODCRCS
Mammalian Cell Selection:	Puromycin
Vector:	pLenti-C-mGFP-P2A-Puro (PS100093)
Tag:	mGFP
ACCN:	NM_004655
ORF Size:	2529 bp
ORF Nucleotide Sequence:	The ORF insert of this clone is exactly the same as(RC210931).
OTI Disclaimer:	The molecular sequence of this clone aligns with the gene accession number as a point of reference only. However, individual transcript sequences of the same gene can differ through naturally occurring variations (e.g. polymorphisms), each with its own valid existence. This clone is substantially in agreement with the reference, but a complete review of all prevailing variants is recommended prior to use. <a href="#">More info</a>
OTI Annotation:	This clone was engineered to express the complete ORF with an expression tag. Expression varies depending on the nature of the gene.
RefSeq:	<a href="#">NM_004655.2</a>
RefSeq Size:	4241 bp
RefSeq ORF:	2532 bp
Locus ID:	8313
UniProt ID:	<a href="#">Q9Y2T1</a>
Cytogenetics:	17q24.1
Domains:	RGS, DAX
Protein Families:	Druggable Genome, ES Cell Differentiation/IPS, Induced pluripotent stem cells



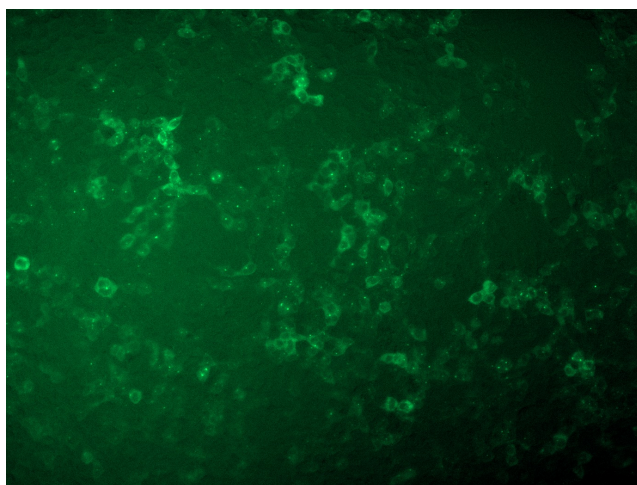
[View online »](#)

**Protein Pathways:** Basal cell carcinoma, Colorectal cancer, Endometrial cancer, Pathways in cancer, Wnt signaling pathway

**MW:** 93.6 kDa

**Gene Summary:** The Axin-related protein, Axin2, presumably plays an important role in the regulation of the stability of beta-catenin in the Wnt signaling pathway, like its rodent homologs, mouse conductin/rat axil. In mouse, conductin organizes a multiprotein complex of APC (adenomatous polyposis of the colon), beta-catenin, glycogen synthase kinase 3-beta, and conductin, which leads to the degradation of beta-catenin. Apparently, the deregulation of beta-catenin is an important event in the genesis of a number of malignancies. The AXIN2 gene has been mapped to 17q23-q24, a region that shows frequent loss of heterozygosity in breast cancer, neuroblastoma, and other tumors. Mutations in this gene have been associated with colorectal cancer with defective mismatch repair. [provided by RefSeq, Jul 2008]

### Product images:



[RC210931L4] was used to prepare Lentiviral particles using [TR30037] packaging kit. HEK293T cells were transduced with RC210931L4V particle to overexpress human AXIN2-mGFP fusion protein.