

Product datasheet for **RC210929**

PHACTR1 (NM_030948) Human Tagged ORF Clone

Product data:

Product Type:	Expression Plasmids
Product Name:	PHACTR1 (NM_030948) Human Tagged ORF Clone
Tag:	Myc-DDK
Symbol:	PHACTR1
Synonyms:	DEE70; dJ257A7.2; EIEE70; RPEL; RPEL1
Mammalian Cell Selection:	Neomycin
Vector:	pCMV6-Entry (PS100001)
E. coli Selection:	Kanamycin (25 ug/mL)



[View online »](#)

ORF Nucleotide Sequence:

>RC210929 ORF sequence
 Red=Cloning site Blue=ORF Green=Tags(s)

TTTTGTAATACGACTCACTATAGGGCGGCCGGAATTCGTCGACTGGATCCGGTACCGAGGAGATCTGCC
 GCC**GCGATCGCC**

ATGGATTATCCAAAATGGATTATTTCTGGATGTAGAGTCTGCTCACAGACTCTTGGATGTTGAGTCAG
 CTAAGATTCTTCTACAGTCAAGGAGCTCAAGCTCGCCGGGCGACCCTGCTCCTGCCTCCACATTAAT
 GGCGGCATCCTCGGAGGATGATATAGACCGCGGCCATCCGGAGAGTGCCTCCAAAGCGACACGCCG
 TACCTCGCAGAGGCCAGGATCTCCTTTAACCTGGGGCAGCTGAGGAAGTGGAGAGGCTGGCGGCGATG
 GTTCTGACTCCCTCGTCCAGGCACCCACACCCACCCATCCGCAGGAGAAGTAAGTTTGCACACCTGGG
 AAGGATTTTCAAGCCTTGAAAATGGAGGAAGAAGAAAAGCGAAAAGTTCAAACACACGTCAGCAGCCCTG
 GAAAGGAAAATATCTATGAGGCAAAGCAGAGAAGAGCTGATAAAGCGAGGAGTCTGAAGGAAATCTATG
 ATAAAGATGGGAACTCTCTATATCCAATGAAGAGGACTCCCTAGAAAATGGGCAGTCCCTGAGCTCCAG
 CCAGCTGTCTCTGCTGCCCTGTCCGAAATGGAGCCAGTCCCAATGCCAGGGATCCCTGCTCATATGAG
 GTGCTCCAACCGTCAGACATCATGGATGGGCCAGATCCTGGCGCCCTGTGAAATTCCTTGTCTGCCAG
 TGAACCTGTCGCCTCCGCTACCTCCAAAGAAAGTCATGATCTGTATGCCCGTGGGGGGGCCAGACCTCTC
 ACTGGTGTCTACACAGCCCAGAAGAGTGGCCAGCAGGGTGTGGCCAGCACCACCACTGTCTTGCC
 TCCCAGATCCAGCACCAGCTGCAGTACGGCAGCCACGGCCAGCACCTCCCTCCACCACCGGCTCCCTCC
 CCATGCACCCCTCGGGCTGCAGAATGATAGACGAGCTCAACAAAACGCTGGCCATGACCATGCAGAGGCT
 GGAAAGCTCTGAGCAGCGGGTCCCCTGTTCCACTTCTTACCACAGCTCTGGGTTGCACTCGGGTGTGGG
 GTCACCAAAGCAGGACCTATGGGCCTCCAGAAAATAGACAAGTGCCAACTGTTGTGATTGAATGTGATG
 ACAATAAAGAAAATGTGCCTCATGAGTCAGACTACGAAGACTTCTTTGCCTGTATACAAGAGAAGAGGA
 GGAAGAGGAGGAGGACGAAGACGACGACAGCTCATTATACACCAGCTCCCTGGCCATGAAGGTCTGCAGG
 AAGGACTCCTTAGCCATCAAACCTCAGCAACAGGCCCTCCAAAGCGAGAGTGAAGAAAAGAACATCCTTC
 CCAGGCAGACGGATGAGGAGCGGCTGGAGCTGAGGCAACAGATTGGCACCAAGCTCACCAGGCGGCTGAG
 CCAGAGGCCAACTGCAGAGGAACTGGAACAGAGGAACATTTTGAACCTCGGAATGAACAAGAGGAACAG
 GAGGAGAAGAGAGAGATCAAGAGGAGGCTAACCCGAAAGCTCAGTCAAAGGCCACGGTGAAGAGCTTC
 GGGAAAGAAAGATCCTCATCCGCTTCACTGACTACGTGGAGGTGGCTGACGCTCAGGACTATGACCCGAG
 GGCAGATAAGCCGTGGACCCGCCTCACCCTGCAGACAAAGCTGCCATCCGAAAGGAGCTCAATGAATTC
 AAAAGCACTGAGATGGAAGTTCATGAATTGAGTAGACACTTAACAAGTTTCACCGACCT

ACGCGTACGCGGCGGCTCGAGCAGAAAACATCTCAGAAGAGGATCTGGCAGCAAATGATATCCTGGATT
 ACAAGGATGACGACGATAAGGTTTAA

Protein Sequence:

>RC210929 protein sequence
 Red=Cloning site Green=Tags(s)

MDYPKMDYFLDVESAHRLLDVESAQRFYFYSQGAQARRATLLLPTLMAASSEDIDRRPIRRVRSKSDTP
 YLAEARISFNLGAAEEVERLAAMRSDSLVPGHTPPPIRRRSKIFANLGRIFKPKWKRKKKSEKFKHTSAAL
 ERKISMRSREELIKRGVLKEIYDKDGLSISNEEDSLENGQSLSSQLSLPALSEMEPVPMPRDPSCSYE
 VLQPSDIMDGPDPGAPVKLPCLPVKLSPLPPKVMICMPVGGPDLVSVYTAQKSGQQGVAQHHTVLP
 SQIQHQLQYGSQGHLPTTGSLLPMHPSGCRMIDELNKTAMTMQRLESSEQRVPCSTSYHSSGLHSGDG
 VTKAGPMLPEIRQVPTVVEICDDNKENVPHESDYEDSSCLYTREEEEEEEDDDSSLYTSSLAMKVCR
 KDSLAIKLSNRPSKRELEEKNILPRQTDEERLELRQQIGTKLTRRLSQRPTAEELQRNILKPRNEQEEQ
 EEKREIKRRLTRKLSQRPTVEELRERKILIRFSDYVEVADAQDYDRRADKPWTRLTAADKAAIRKELNEF
 KSTEMEVHEL SRHLTRFHRP

TRTRPLEQKLISEEDLAANDILDYKDDDDKV

Chromatograms:

https://cdn.origene.com/chromatograms/mk6383_g03.zip

Restriction Sites:

Sgfl-Mlul

Cloning Scheme:


ACCN: NM_030948

ORF Size: 1740 bp

OTI Disclaimer: The molecular sequence of this clone aligns with the gene accession number as a point of reference only. However, individual transcript sequences of the same gene can differ through naturally occurring variations (e.g. polymorphisms), each with its own valid existence. This clone is substantially in agreement with the reference, but a complete review of all prevailing variants is recommended prior to use. [More info](#)

OTI Annotation: This clone was engineered to express the complete ORF with an expression tag. Expression varies depending on the nature of the gene.

Components: The ORF clone is ion-exchange column purified and shipped in a 2D barcoded Matrix tube containing 10ug of transfection-ready, dried plasmid DNA (reconstitute with 100 ul of water).

- Reconstitution Method:**
1. Centrifuge at 5,000xg for 5min.
 2. Carefully open the tube and add 100ul of sterile water to dissolve the DNA.
 3. Close the tube and incubate for 10 minutes at room temperature.
 4. Briefly vortex the tube and then do a quick spin (less than 5000xg) to concentrate the liquid at the bottom.
 5. Store the suspended plasmid at -20°C. The DNA is stable for at least one year from date of shipping when stored at -20°C.

RefSeq: [NM_030948.6](#)

RefSeq Size: 2896 bp

RefSeq ORF: 1743 bp

Locus ID: 221692

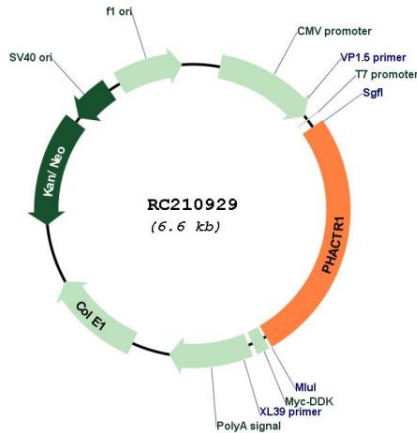
UniProt ID: [Q9C0D0](#)

Cytogenetics: 6p24.1

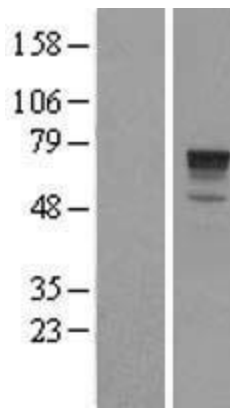
MW: 66.3 kDa

Gene Summary: The protein encoded by this gene is a member of the phosphatase and actin regulator family of proteins. This family member can bind actin and regulate the reorganization of the actin cytoskeleton. It plays a role in tubule formation and in endothelial cell survival. Polymorphisms in this gene are associated with susceptibility to myocardial infarction, coronary artery disease and cervical artery dissection. Alternative splicing of this gene results in multiple transcript variants. [provided by RefSeq, Apr 2016]

Product images:



Circular map for RC210929



Western blot validation of overexpression lysate (Cat# [LY410643]) using anti-DDK antibody (Cat# [TA50011-100]). Left: Cell lysates from untransfected HEK293T cells; Right: Cell lysates from HEK293T cells transfected with RC210929 using transfection reagent MegaTran 2.0 (Cat# [TT210002]).