

## Product datasheet for **RC210928**

### **NRP2 (NM\_201267) Human Tagged ORF Clone**

#### **Product data:**

Product Type:	Expression Plasmids
Product Name:	NRP2 (NM_201267) Human Tagged ORF Clone
Tag:	Myc-DDK
Symbol:	NRP2
Synonyms:	NP2; NPN2; PRO2714; VEGF165R2
Mammalian Cell Selection:	Neomycin
Vector:	pCMV6-Entry (PS100001)
E. coli Selection:	Kanamycin (25 ug/mL)



[View online »](#)

ORF Nucleotide  
Sequence:

>RC210928 ORF sequence  
Red=Cloning site Blue=ORF Green=Tags(s)

TTTTGTAATACGACTCACTATAGGGCGGCCGGGAATTCGTCGACTGGATCCGGTACCGAGGAGATCTGCC  
GCC**CGGATCGCC**

ATGGATATGTTTCTCTCACCTGGGTTTTCTTAGCCCTCTACTTTTCAAGACACCAAGTGAGAGGCCAAC  
CAGACCCACCGTGCAGGTCGTTTGAATTCCAAAGATGCTGGCTATATCACCTCTCCCGTTACCCCA  
GGACTACCCCTCCACCAGAAGTGCAGTGGATTGTTTACGCCCCGAACCAACCAAGAAGATTGCCTC  
AACTTCAACCCTCACTTTGAAATCGAGAAGCAGACTGCAAGTATGACTTTATCGAGATTCGGGATGGG  
ACAGTGAATCCGCAGACCTCCTGGGCAAACTGTGGAAACATCGCCCCGCCACCATCATCTCCTCGGG  
CTCCATGCTCTACATCAAGTTCACCTCCGACTACGCCCGCAGGGGGCAGGCTTCTCTGCGCTACGAG  
ATCTTCAAGACAGGCTCTGAAGATTGCTCAAAAACTTACAAGCCCCAACGGGACCATCGAATCTCCTG  
GGTTTCTGAGAAGTATCCACACAACCTGGACTGCACCTTACCATCCTGGCCAAACCAAGATGGAGAT  
CATCCTGCAGTTCCTGATCTTTGACCTGGAGCATGACCTTTGCAGGTGGGAGAGGGGGACTGCAAGTAC  
GATTGGCTGGACATCTGGGATGGCATTCCACATGTTGGCCCCCTGATTGGCAAGTACTGTGGGACAAAA  
CACCTCTGAACCTCGTTTCATCGACGGGATCCTCTCCCTGACCTTTCACACGGACATGGCGGTGGCCAA  
GGATGGCTTCTCTGCGGTTACTACCTGGTCCACCAAGAGCCACTAGAGAACCTTTCAGTGAATGTTCT  
CTGGGCATGGAGTCTGGCCGGATTGCTAATGAACAGATCAGTGCCTCATCTACCTACTCTGATGGGAGGT  
GGACCCCTCAACAAAGCCGGCTCCATGGTGTGACAATGGCTGGACCCCAACTTGGATTCCAACAAGGA  
GTATCTCCAGGTGGACCTGCGCTTTTTAACCATGCTCACGGCCATCGAACACAGGGAGCGATTTCCAGG  
GAAACACAGAATGGCTACTACGTCAAATCTACAAGCTGGAAGTCAGACTAATGGAGAGGACTGGATGG  
TGTACCGGCATGGCAAAAACACAAGGTATTTCAAGCCAACAACGATGCAACTGAGGTGGTCTGAACAA  
GCTCCACGCTCCACTGCTGACAAGGTTTGTAGAATCCGCCCTCAGACCTGGCACTCAGGTATCGCCCTC  
CGGCTGGAGCTCTTCGGCTGCCGGTACAGATGCTCCCTGCTCCAACATGCTGGGGATGCTCTCAGGCC  
TCATTGCAGACTCCAGATCTCCGCTCTTCCACCCAGGAATACCTCTGGAGCCCCAGTGCAGCCCGCT  
GGTCAGCAGCCGCTCGGGCTGGTTCCTCGAATCCCTCAGGCCAGCCCGGTGAGGAGTGGCTTCAGGTA  
GATCTGGGAACACCAAGACAGTGAAGGTGTCATCATCCAGGGAGCCCGCGGAGGAGACAGTACTCTG  
CTGTGGAAGCCAGAGCATTGTGCGCAAGTTCAAAGTCTCTACAGCCTAAACGGCAAGGACTGGGAATA  
CATTCCAGGACCCAGGACCCAGCAGCCAAAGCTGTTTGAAGGGAACATGCACTATGACACCCCTGACATC  
CGAAGGTTTGACCCATTCCGGCACAGTATGTGCGGGTATACCCGGAGAGGTGGTCGCCGGCGGGATTG  
GGATGCGGCTGGAGGTGCTGGGCTGTGACTGGACAGACTCCAAGCCACGGTAGAGACGCTGGGACCCAC  
TGTGAAGAGCGAAGAGACAACCACCCCTACCCACCGAAGAGGAGGCCACAGAGTGTGGGGAGAACTGC  
AGCTTTGAGGATGACAAAGATTTGCAGCTCCCTTCGGGATTCAATTGCAACTTCGATTTCTCGAGGAGC  
CCTGTGGTTGGATGTATGACCATGCCAAGTGGCTCCGGACCACCTGGGCCAGCAGCTCCAGCCAAACGA  
CCGGACGTTTCCAGATGACAGGAATTTCTTGGGCTGCAGAGTGCAGCCAGAGAGAGGGCCAGTATGCC  
CGGCTCATCAGCCCCCTGTCCACCTGCCCCGAAGCCCGGTGTGCATGGAGTTCAGTACCAGGCCACGG  
GCGGCCCGGGGTGGCGCTGCAGGTGGTGCGGGAAGCCAGCCAGGAGAGCAAGTTGCTGTGGTTCATCCG  
TGAGGACCAGGGCGGCGAGTGAAGCACGGGCGGATCATCTGCCAGCTACGACATGGAGTACCAGATT  
GTGTTTCGAGGGAGTGATAGGGAAAAGGACGTTCCGGAGAGATTGCCATTGATGACATTCGATAAGCACTG  
ATGTCCCACTGGAGAAGTGCATGGAACCATCTCGGCTTTTGCAGGGGGCACCTCCTGCCAGGGACCGA  
GCCACAGTGGACACGGTGCCATGCAGCCATCCCAGCCTACTGGTATTACGTAATGGCCGCGGGGGC  
GCCGTGCTGGTGTGCTCCGTCGCGTGGCCCTGGTGTCCACTACCACCGGTTCCGCTATGCGGCCA  
AGAAGACCGATCACTCCATCACCTACAAAACCTCCCACTACACCAACGGGGCCCCCTGGCGGTGGAGCC  
CACCTAACCATTAAGCTAGAGCAAGACCGTGGCTCGCACTGC

**ACGCGT**ACGCGGCCGCTCGAGCAGAAACTCATCTCAGAAGAGGATCTGGCAGCAATGATATCCTGGATT  
ACAAGGATGACGACGATAAGGTTTAA

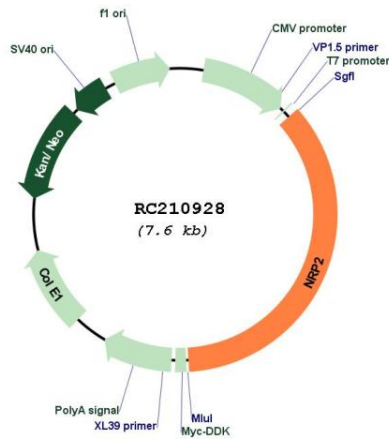


<b>ORF Size:</b>	2703 bp
<b>OTI Disclaimer:</b>	<p>Due to the inherent nature of this plasmid, standard methods to replicate additional amounts of DNA in E. coli are highly likely to result in mutations and/or rearrangements. Therefore, OriGene does not guarantee the capability to replicate this plasmid DNA. Additional amounts of DNA can be purchased from OriGene with batch-specific, full-sequence verification at a reduced cost. Please contact our customer care team at <a href="mailto:custsupport@origene.com">custsupport@origene.com</a> or by calling 301.340.3188 option 3 for pricing and delivery.</p> <p>The molecular sequence of this clone aligns with the gene accession number as a point of reference only. However, individual transcript sequences of the same gene can differ through naturally occurring variations (e.g. polymorphisms), each with its own valid existence. This clone is substantially in agreement with the reference, but a complete review of all prevailing variants is recommended prior to use. <a href="#">More info</a></p>
<b>OTI Annotation:</b>	This clone was engineered to express the complete ORF with an expression tag. Expression varies depending on the nature of the gene.
<b>Components:</b>	The ORF clone is ion-exchange column purified and shipped in a 2D barcoded Matrix tube containing 10ug of transfection-ready, dried plasmid DNA (reconstitute with 100 ul of water).
<b>Reconstitution Method:</b>	<ol style="list-style-type: none"> <li>1. Centrifuge at 5,000xg for 5min.</li> <li>2. Carefully open the tube and add 100ul of sterile water to dissolve the DNA.</li> <li>3. Close the tube and incubate for 10 minutes at room temperature.</li> <li>4. Briefly vortex the tube and then do a quick spin (less than 5000xg) to concentrate the liquid at the bottom.</li> <li>5. Store the suspended plasmid at -20°C. The DNA is stable for at least one year from date of shipping when stored at -20°C.</li> </ol>
<b>RefSeq:</b>	<a href="#">NM_201267.1</a> , <a href="#">NP_957719.1</a>
<b>RefSeq Size:</b>	4148 bp
<b>RefSeq ORF:</b>	2706 bp
<b>Locus ID:</b>	8828
<b>UniProt ID:</b>	<a href="#">O60462</a>
<b>Cytogenetics:</b>	2q33.3
<b>Protein Families:</b>	Druggable Genome, Transmembrane
<b>MW:</b>	101.4 kDa

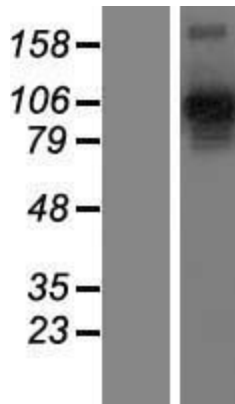
**Gene Summary:**

This gene encodes a member of the neuropilin family of receptor proteins. The encoded transmembrane protein binds to SEMA3C protein {sema domain, immunoglobulin domain (Ig), short basic domain, secreted, (semaphorin) 3C} and SEMA3F protein {sema domain, immunoglobulin domain (Ig), short basic domain, secreted, (semaphorin) 3F}, and interacts with vascular endothelial growth factor (VEGF). This protein may play a role in cardiovascular development, axon guidance, and tumorigenesis. Multiple transcript variants encoding distinct isoforms have been identified for this gene. [provided by RefSeq, Jul 2008]

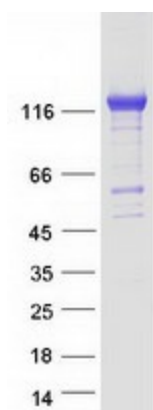
**Product images:**



Circular map for RC210928



Western blot validation of overexpression lysate (Cat# [LY404506]) using anti-DDK antibody (Cat# [TA50011-100]). Left: Cell lysates from untransfected HEK293T cells; Right: Cell lysates from HEK293T cells transfected with RC210928 using transfection reagent MegaTran 2.0 (Cat# [TT210002]).



Coomassie blue staining of purified NRP2 protein (Cat# [TP310928]). The protein was produced from HEK293T cells transfected with NRP2 cDNA clone (Cat# RC210928) using MegaTran 2.0 (Cat# [TT210002]).