

Product datasheet for **RC210926**

TSGA2 (RSPH1) (NM_080860) Human Tagged ORF Clone

Product data:

Product Type:	Expression Plasmids
Product Name:	TSGA2 (RSPH1) (NM_080860) Human Tagged ORF Clone
Tag:	Myc-DDK
Symbol:	TSGA2
Synonyms:	CT79; RSP44; RSPH10A; TSA2; TSGA2
Mammalian Cell Selection:	Neomycin
Vector:	pCMV6-Entry (PS100001)
E. coli Selection:	Kanamycin (25 ug/mL)
ORF Nucleotide Sequence:	>RC210926 ORF sequence Red=Cloning site Blue=ORF Green=Tags(s)

TTTTGTAATACGACTCACTATAGGGCGGCCGGAATTCGTCGACTGGATCCGGTACCGAGGAGATCTGCC
 GCC**CGCATCGC**

ATGTCGGACCTGGGCTCGGAGGAGTTGGAGGAGGAGGAGAGAATGATATTGGGGAATATGAGGGGGTTC
 GGAATGAGGCAGGCGAAAGGCACGGACGTGGGAGGGCACGGCTACCCAACGGGGACACCTACGAAGGGAG
 CTACGAATTCGGTAAAAGACATGGCCAGGGGATCTACAAATTTAAAAATGGTGCTCGATATATCGGAGAA
 TATGTTAGAAATAAAAAGCACGGTCAAGGCACCTTTTATATATCCAGATGGATCCAGATATGAAGGAGAGT
 GGGCAATGACCTGCGGCACGGCCATGGCGTATACTACTACATCAATAATGACACCTACACTGGAGAGTG
 GTTTGCTCATCAAAGGCATGGGCAAGGCACCTATTTATACGCGGAGACGGGCAGTAAGTATGTTGGCACC
 TGGGTGAACGGACAGCAGGAGGGCACGGCCGAGCTCATTACCTGAACACAGGTACCAGGGCAAGTTCT
 TGAACAAAAATCCTGTTGGCCCTGGAAAGTATGTATTTGATGTTGGGTGTGAACAACATGGTGAATATCG
 TTTAACAGATATGGAAAGAGGAGAAGAGGAAGAGGAGGAAGAATTAGTAACTGTTGTTCCAAAATGGAAA
 GCTACCAAAATCACTGAATTGGCCCTGTGGACCAACTCTCCCCAAAAGCCGACCTCTACGGATGGAC
 CTGGCCAAGACGCTCCAGGAGCTGAGAGTGCAGGAGAACC CGGGAGGAGGCCAGGCTCTGCTGGAGGG
 CTTGAGGGTGAGATGGACATGAGGCCTGGAGATGAAGATGCAGACGTCCTCCGGGAAGAGAGCCGGGAG
 TATGACCAGGAGGAGTTCCGCTATGACATGGATGAGGGAACATTAATTCTGAAGAAGAAGAACTAGAC
 AGTCAGACCTCCAGGAC

ACGCGTACGCGGCCGCTCGAGCAGAACTCATCTCAGAAGAGGATCTGGCAGCAATGATATCCTGGATT
 ACAAGGATGACGACGATAAGGTTTAA


[View online »](#)

Protein Sequence: >RC210926 protein sequence
 Red=Cloning site Green=Tags(s)

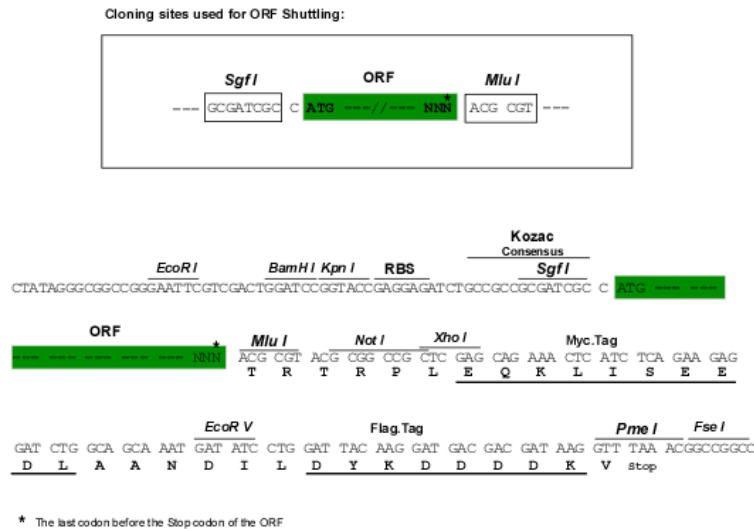
MSDLGSEEEEEENDIGEYEGGRNEAGERHGRGRARLPNGDTYEGSYFEGKRHGQGIYKFKNGARYIGE
 YVRNKKHGQGTFIYPDGSRYEGEWANDLRHGHGVYYYINNDTYTGEWFAHQRHGQGTLYAETGSKYVGT
 WYNGQQEGTAELIHLNHRYQGKFLNKNPVGPGKYVFDVGCEQHGEYRLTDMERGESEEEEEELVTVPKWK
 ATQITELALWPTLPKKPTSTDGPGQDAPGAESAGEPGEEAQALLEGFEGEMDMRPGDEDADVLREESRE
 YDQEEFRYDMDEGNINSEEEETRQSDLQD

TRTRPLEQKLISEEDLAANDILDYKDDDDKV

Chromatograms: https://cdn.origene.com/chromatograms/mk6383_h08.zip

Restriction Sites: SgfI-MluI

Cloning Scheme:



ACCN: NM_080860

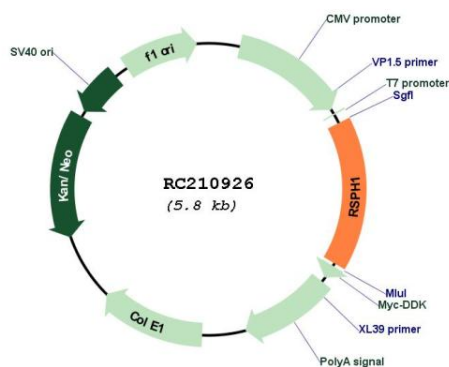
ORF Size: 927 bp

OTI Disclaimer: Due to the inherent nature of this plasmid, standard methods to replicate additional amounts of DNA in E. coli are highly likely to result in mutations and/or rearrangements. Therefore, OriGene does not guarantee the capability to replicate this plasmid DNA. Additional amounts of DNA can be purchased from OriGene with batch-specific, full-sequence verification at a reduced cost. Please contact our customer care team at custsupport@origene.com or by calling 301.340.3188 option 3 for pricing and delivery.

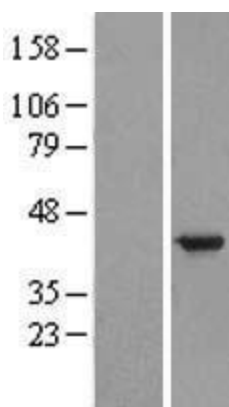
The molecular sequence of this clone aligns with the gene accession number as a point of reference only. However, individual transcript sequences of the same gene can differ through naturally occurring variations (e.g. polymorphisms), each with its own valid existence. This clone is substantially in agreement with the reference, but a complete review of all prevailing variants is recommended prior to use. [More info](#)

OTI Annotation:	This clone was engineered to express the complete ORF with an expression tag. Expression varies depending on the nature of the gene.
Components:	The ORF clone is ion-exchange column purified and shipped in a 2D barcoded Matrix tube containing 10ug of transfection-ready, dried plasmid DNA (reconstitute with 100 ul of water).
Reconstitution Method:	<ol style="list-style-type: none"> 1. Centrifuge at 5,000xg for 5min. 2. Carefully open the tube and add 100ul of sterile water to dissolve the DNA. 3. Close the tube and incubate for 10 minutes at room temperature. 4. Briefly vortex the tube and then do a quick spin (less than 5000xg) to concentrate the liquid at the bottom. 5. Store the suspended plasmid at -20°C. The DNA is stable for at least one year from date of shipping when stored at -20°C.
Note:	Plasmids are not sterile. For experiments where strict sterility is required, filtration with 0.22um filter is required.
RefSeq:	NM_080860.4
RefSeq Size:	1445 bp
RefSeq ORF:	930 bp
Locus ID:	89765
UniProt ID:	Q8WYR4
Cytogenetics:	21q22.3
MW:	35.1 kDa
Gene Summary:	<p>This gene encodes a male meiotic metaphase chromosome-associated acidic protein. This gene is expressed in tissues with motile cilia or flagella, including the trachea, lungs, airway brushings, and testes. Mutations in this gene result in primary ciliary dyskinesia-24. Alternatively spliced transcript variants encoding different isoforms have been found for this gene. [provided by RefSeq, Sep 2014]</p>

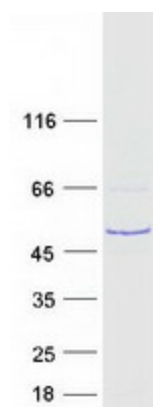
Product images:



Circular map for RC210926



Western blot validation of overexpression lysate (Cat# [LY409012]) using anti-DDK antibody (Cat# [TA50011-100]). Left: Cell lysates from untransfected HEK293T cells; Right: Cell lysates from HEK293T cells transfected with RC210926 using transfection reagent MegaTran 2.0 (Cat# [TT210002]).



Coomassie blue staining of purified RSPH1 protein (Cat# [TP310926]). The protein was produced from HEK293T cells transfected with RSPH1 cDNA clone (Cat# RC210926) using MegaTran 2.0 (Cat# [TT210002]).