

Product datasheet for RC210924

UBE2CBP (UBE3D) (NM_198920) Human Tagged ORF Clone

Product data:

Product Type:	Expression Plasmids
Product Name:	UBE2CBP (UBE3D) (NM_198920) Human Tagged ORF Clone
Tag:	Myc-DDK
Symbol:	UBE2CBP
Synonyms:	C6orf157; H10BH; UBE2CBP; YJR141W
Mammalian Cell Selection:	Neomycin
Vector:	pCMV6-Entry (PS100001)
E. coli Selection:	Kanamycin (25 ug/mL)
ORF Nucleotide Sequence:	>RC210924 ORF sequence Red=Cloning site Blue=ORF Green=Tags(s)

TTTTGTAATACGACTCACTATAGGGCGGCCGGAATTCGTCGACTGGATCCGGTACCGAGGAGATCTGCC
GCC**CGATCGCC**

ATGGCGGCTTCTGCGCGGAGACGCGCGTGTCTGGAGGTGCGGGACAGCTGCAGAGCGCGTCTGA
TCCTGGGAGAACCGAAAGAAGGAGGTATGCCATGAATTTCCATAATGCCATCTTCACTCCAGATGAA
AACCCCTGAAGGCTGCACAGAAATCCAGCTCCAGCAGAGGTGAGCTTGTACCTTCTTCCGTGGG
CTACAGTTTGTGGAGATGGACTGCACCTGCGACTGCAGACGCAAGCAAAATAGGCACAAACTGA
TTTCAATGTTAATCAAAGCTCGCAAACCAAGAATGTTGCACGTTTTATTGCCAATCCTGCGGTGAAGT
CATAATAAAGACAGGAAGCTCCTCAGGGTGTCCCACTGCCGAGTGAGAACTGGGGAGCTCTAGTTGGA
GAATGGTGTTCATCCTGACCCCTTGTCTAATAAATCACTTCATCCGCAAGAGAATGACTGTTTTATTG
GAGACTCTTCTTCTTGGTGAATTAAGAACCAGTTTGTGGCAGCAAAGACCTGAACTATCCCCAGTGGA
GATGTGCTGTGTTCTTCTGACAACCATTTGAAATTTGAAACCAAGGCAAAATACCAAAGTAAATTTGTAAG
CGTTGCAAGGTAATGTTGGGAGAGACCGTGTATCAGAAACCAAGTTTTATGACAGAGATAATTA
TTCAGTCATCTGAGAGGAGTTTTCTATCATACCAAGGCTTGGTTTGTCCAGAGCGTGATCGCCCAGTG
TCTGGTGCAGCTCTCCTCTGCTAGAAGCACTTTAGATTACAGATTCAAGGTCAGGATGACAAAGTGAT
ATCTTGCTATGGCTTTAAATTCAGACAGTTTGGTGATTGAATCTTTGAGAAATCCAAATATATCAAAA
AATTCCTTGTGGAAAACACATTCAAAGCCGATTCTAGTTCTGCTGGAGTGCTGTCAAGGTCCTCTA
CCAGCCATGCATCAAAGCAGGAATGAAAACTTGTGAGCTTGTGGGAAAGTGACATCAGCGTCCACCCG
CTAACCTGCCCTCTGCAACCTGCTGGAGCTGCTGTTGATATTGTCAAAGAGTAATGCCAATCTGCCTT
CATCCCTCGCCGTGTAATTCCTTTCAGGTGGCCTTTTTGAAGATG

ACGCGTACGCGGCCGCTCGAGCAGAACTCATCTCAGAAGAGGATCTGGCAGCAATGATATCCTGGATT
ACAAGGATGACGACGATAAGGTTTAA



[View online »](#)

Protein Sequence: >RC210924 protein sequence
Red=Cloning site Green=Tags(s)

MAASAAETRVFLEVRGQLQSALLILGEPKEGGMPMNISIMPSSLQMKTPPEGCTEIQLPAEVRLVPSSCRG
 LQFVVGDLHLRLQTQAKLGTKLISMFNQSSQTQECCTFYCQSCGEVIKDRKLLRVLPLPSENWALVG
 EWCCHPDPFANKSLHPQENDCFIGDSFFLVNLRSLWQQRPESLVEMCCVSSDNHCKLEPKANTKVICK
 RCKVMLGETVSSSETTKFYMTEIIIQSSERSFPIIPRSWFVQSVIAQCLVQLSSARSTFRFTIQGDDKVY
 ILLWLLNSDSLVIESLRNSKYIKKFPLENTFKADSSSAWSAVKVLVQPCIKSRNEKLVSLWESDISVHP
 LTLPSATCLELLILSKSNANLPSSLRRVNSFQVAFMK

TRTRPLEQKLISEEDLAANDILDYKDDDDKV

Chromatograms: https://cdn.origene.com/chromatograms/mk6383_g11.zip

Restriction Sites: SgfI-MluI

Cloning Scheme:



* The last codon before the Stop codon of the ORF

ACCN: NM_198920

ORF Size: 1167 bp

OTI Disclaimer: The molecular sequence of this clone aligns with the gene accession number as a point of reference only. However, individual transcript sequences of the same gene can differ through naturally occurring variations (e.g. polymorphisms), each with its own valid existence. This clone is substantially in agreement with the reference, but a complete review of all prevailing variants is recommended prior to use. [More info](#)

OTI Annotation: This clone was engineered to express the complete ORF with an expression tag. Expression varies depending on the nature of the gene.

Components: The ORF clone is ion-exchange column purified and shipped in a 2D barcoded Matrix tube containing 10ug of transfection-ready, dried plasmid DNA (reconstitute with 100 ul of water).

Reconstitution Method:

1. Centrifuge at 5,000xg for 5min.
2. Carefully open the tube and add 100ul of sterile water to dissolve the DNA.
3. Close the tube and incubate for 10 minutes at room temperature.
4. Briefly vortex the tube and then do a quick spin (less than 5000xg) to concentrate the liquid at the bottom.
5. Store the suspended plasmid at -20°C. The DNA is stable for at least one year from date of shipping when stored at -20°C.

RefSeq: [NM_198920.3](#)

RefSeq Size: 1849 bp

RefSeq ORF: 1170 bp

Locus ID: 90025

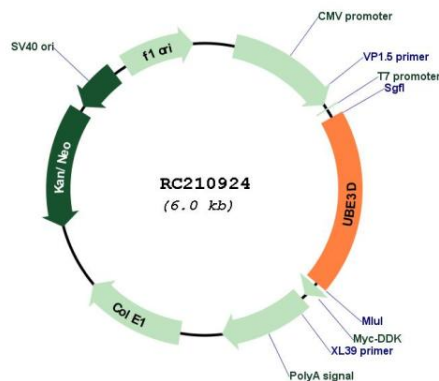
UniProt ID: [Q7Z6J8](#)

Cytogenetics: 6q14.1

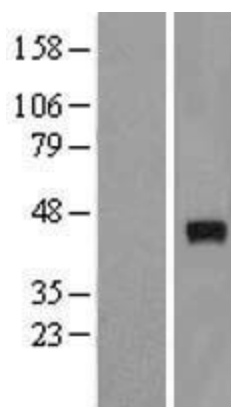
MW: 43.7 kDa

Gene Summary: E3 ubiquitin-protein ligase which accepts ubiquitin from specific E2 ubiquitin-conjugating enzymes, and transfers it to substrates, generally promoting their degradation by the proteasome.[UniProtKB/Swiss-Prot Function]

Product images:



Circular map for RC210924



Western blot validation of overexpression lysate (Cat# [LY404659]) using anti-DDK antibody (Cat# [TA50011-100]). Left: Cell lysates from untransfected HEK293T cells; Right: Cell lysates from HEK293T cells transfected with RC210924 using transfection reagent MegaTran 2.0 (Cat# [TT210002]).