

## Product datasheet for **RC210918**

### ERP29 (NM\_006817) Human Tagged ORF Clone

#### Product data:

Product Type:	Expression Plasmids
Product Name:	ERP29 (NM_006817) Human Tagged ORF Clone
Tag:	Myc-DDK
Symbol:	ERP29
Synonyms:	C12orf8; ERp28; ERp31; HEL-S-107; PDI-DB; PDIA9
Mammalian Cell Selection:	Neomycin
Vector:	pCMV6-Entry (PS100001)
E. coli Selection:	Kanamycin (25 ug/mL)
ORF Nucleotide Sequence:	>RC210918 ORF sequence Red=Cloning site Blue=ORF Green=Tags(s)

TTTTGTAATACGACTCACTATAGGGCGGCCGGAATTCGTCGACTGGATCCGGTACCGAGGAGATCTGCC  
 GCC**CGATCGC**C

ATGGCTGCCGCTGTGCCCCGCGCCGCAATTTCTCTCCCGCTGCTTCCCTTCTCCTGGGCTTCTGCTCC  
 TCTCCGCTCCGCATGGCGGCAGCGGCTGCACACCAAGGGCGCCCTTCCCTGGATACGGTCACTTTCTA  
 CAAGGTCATTCCAAAAGCAAGTTCGTCTTGGTGAAGTTCGACACCCAGTACCCCTACGGTGAGAAGCAG  
 GATGAGTTCAAGCGTCTTGCTGAAAACCGCTTCCAGCGATGATCTCTTGGTGGCAGAGGTGGGGATCT  
 CAGATTATGGTGACAAGCTGAACATGGAGCTGAGTGAGAAATACAAGCTGGACAAAGAGAGCTACCCAGT  
 CTTCTACCTCTTCCGGGATGGGGACTTTGAGAACCCAGTCCCATACACTGGGGCAGTTAAGTTGGAGCC  
 ATCCAGCGCTGGCTGAAGGGGCAAGGGGTCTACCTAGGTATGCCTGGTTGCCTGTATACGACGCCC  
 TGGCCGGGGAGTTCATCAGGGCCTCTGGTGTGGAGGCCCGCCAGGCCCTTTGAAGCAGGGGCAAGATAA  
 CCTCTCAAGTGTGAAGGAGACTCAGAAGAAGTGGGCCGAGCAATACCTGAAGATCATGGGAAGATCTTA  
 GACCAAGGGGAGGACTTCCAGCATCAGAGATGACACGGATCGCCAGGCTGATTGAGAAGAACAAGATGA  
 GTGACGGGAAGAAGGAGAGCTCCAGAAGAGCTTAAACATCTGACTGCCTTCCAGAAGAAGGGGCCGA  
 GAAAGAGGAGCTG

**ACGCGT**ACGCGGCCGCTCGAGCAGAACTCATCTCAGAAGAGGATCTGGCAGCAAATGATATCCTGGATT  
 ACAAGGATGACGACGATAAGGTTTAA


[View online »](#)

**Protein Sequence:** >RC210918 protein sequence  
 Red=Cloning site Green=Tags(s)

MAAAVPRAAFLSPLLPLLLGFLLLSAPHGGSGLHTKGALPLDTVTFYKVIPKSKFVLVKFDTQYPYGEKQ  
 DEFKRLAENSASSDLLVAEVGISDYGDKLNMELSEKYKLDKESYPVFYLF RDGDFENVPYTGAVKVGA  
 IQRWLKQGQVYLGMPGCLPVYDALAGEFIRASGV EARQALLKQGQDNLS SVKETQKKWAEQYLKIMGKIL  
 DQGEDFPASEMTRIARLIEKNKMSDGKKEELQKSLNILTAFQKKGAKEEL

TRTRPLEQKLISEEDLAANDILDYKDDDDKV

**Chromatograms:** [https://cdn.origene.com/chromatograms/mk6008\\_c04.zip](https://cdn.origene.com/chromatograms/mk6008_c04.zip)

**Restriction Sites:** SgfI-MluI

**Cloning Scheme:**



**ACCN:** NM\_006817

**ORF Size:** 783 bp

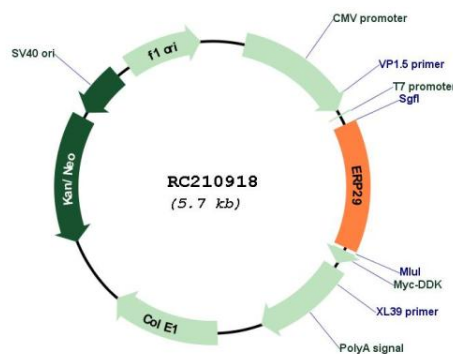
**OTI Disclaimer:** The molecular sequence of this clone aligns with the gene accession number as a point of reference only. However, individual transcript sequences of the same gene can differ through naturally occurring variations (e.g. polymorphisms), each with its own valid existence. This clone is substantially in agreement with the reference, but a complete review of all prevailing variants is recommended prior to use. [More info](#)

**OTI Annotation:** This clone was engineered to express the complete ORF with an expression tag. Expression varies depending on the nature of the gene.

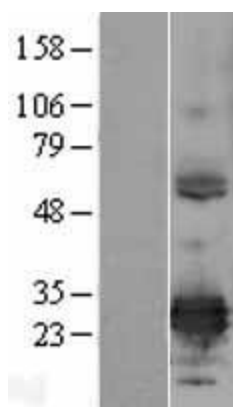
**Components:** The ORF clone is ion-exchange column purified and shipped in a 2D barcoded Matrix tube containing 10ug of transfection-ready, dried plasmid DNA (reconstitute with 100 ul of water).

<b>Reconstitution Method:</b>	<ol style="list-style-type: none"> <li>1. Centrifuge at 5,000xg for 5min.</li> <li>2. Carefully open the tube and add 100ul of sterile water to dissolve the DNA.</li> <li>3. Close the tube and incubate for 10 minutes at room temperature.</li> <li>4. Briefly vortex the tube and then do a quick spin (less than 5000xg) to concentrate the liquid at the bottom.</li> <li>5. Store the suspended plasmid at -20°C. The DNA is stable for at least one year from date of shipping when stored at -20°C.</li> </ol>
<b>Note:</b>	Plasmids are not sterile. For experiments where strict sterility is required, filtration with 0.22um filter is required.
<b>RefSeq:</b>	<u>NM_006817.4</u>
<b>RefSeq Size:</b>	1472 bp
<b>RefSeq ORF:</b>	786 bp
<b>Locus ID:</b>	10961
<b>UniProt ID:</b>	<u>P30040</u>
<b>Cytogenetics:</b>	12q24.13
<b>Protein Families:</b>	Transmembrane
<b>MW:</b>	29 kDa
<b>Gene Summary:</b>	<p>This gene encodes a protein which localizes to the lumen of the endoplasmic reticulum (ER). It is a member of the protein disulfide isomerase (PDI) protein family but lacks an active thioredoxin motif, suggesting that this protein does not function as a disulfide isomerase. The canonical protein dimerizes and is thought to play a role in the processing of secretory proteins within the ER. Alternative splicing results in multiple transcript variants encoding different isoforms. [provided by RefSeq, Dec 2016]</p>

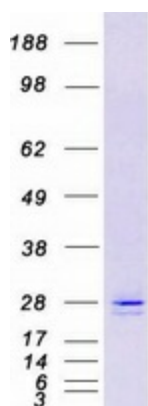
## Product images:



Circular map for RC210918



Western blot validation of overexpression lysate (Cat# [LY402039]) using anti-DDK antibody (Cat# [TA50011-100]). Left: Cell lysates from untransfected HEK293T cells; Right: Cell lysates from HEK293T cells transfected with RC210918 using transfection reagent MegaTran 2.0 (Cat# [TT210002]).



Coomassie blue staining of purified ERP29 protein (Cat# [TP310918]). The protein was produced from HEK293T cells transfected with ERP29 cDNA clone (Cat# RC210918) using MegaTran 2.0 (Cat# [TT210002]).