

Product datasheet for RC210917

GPR10 (PRLHR) (NM_004248) Human Tagged ORF Clone

Product data:

Product Type:	Expression Plasmids
Product Name:	GPR10 (PRLHR) (NM_004248) Human Tagged ORF Clone
Tag:	Myc-DDK
Symbol:	GPR10
Synonyms:	GPR10; GR3; PrRPR
Mammalian Cell Selection:	Neomycin
Vector:	pCMV6-Entry (PS100001)
E. coli Selection:	Kanamycin (25 ug/mL)
ORF Nucleotide Sequence:	>RC210917 ORF sequence Red=Cloning site Blue=ORF Green=Tags(s)

TTTTGTAATACGACTCACTATAGGGCGGCCGGAATTCGTCGACTGGATCCGGTACCGAGGAGATCTGCC
GCC**CGATCGCC**

ATGGCCTCATCGACCACTCGGGGCCCCAGGGTTTCTGACTTATTTTCTGGGCTGCCGCCGGCGGTCAAA
CTCCCGCAACCAGAGCGCAGAGGCCTCGGCGGGCAACGGGTCGGTGGCTGGCGCGGACGCTCCAGCCGT
CACGCCCTCCAGAGCCTGCAGCTGGTGCATCAGCTGAAGGGGCTGATCGTGCTGCTCTACAGCGTCGTG
GTGGTCGTGGGGCTGGTGGCAACTGCCTGCTGGTGGTGCATCGCGCGGGTGCGCCGGCTGCACAACG
TGACGAACCTCCTCATCGCAACCTGGCCTTGCCGACGTGCTCATGTGCACCGCCTGCGTGCCGCTCAC
GCTGGCCTATGCCTTCGAGCCACGCGGCTGGGTGTTTCGGCGCGGCCCTGTGCCACCTGGTCTTCTCCTG
CAGCCGGTCACCGTCTATGTGTCGGTGTTCACGCTCACCACCATCGCAGTGGACCCTACGTCGTGCTGG
TGACCCGCTGAGGCGGCGCATCTCGTGCCTCAGCGCCTACGCTGTGCTGGCCATCTGGGCGTGTG
CGCGGTGCTGGCGCTGCCCGCCCGGTGCACACCTATCACGTGGAGCTCAAGCCGACGAGCTGCGCCTC
TGCGAGGAGTTCTGGGGCTCCAGGAGCGCCAGCGCCAGCTCTACGCTGGGGCTGCTGCTGGTCACT
ACCTGCTCCCTGCTGGTCATCCTCCTGTCTTACGTCGGGTGTGAGTGAAGCTCCGCAACCGCGTGGT
GCCGGGCTGCGTGACCCAGAGCCAGGCCGACTGGGACCGCGCTCGGCGCGGCGCACCTTCTGCTTGTG
GTGGTGGTGGTGGTGGTTCGCGCTGCTGGCTGCCGCTGCAGTCTTCAACCTGCTGCGGGACCTCG
ACCCCCAGCCATCGACCCTTACGCTTTGGGCTGGTGCAGTGTCTGCCACTGGCTCGCCATGAGTTTC
GGCCTGTACAACCCCTTCATCTACGCTGGTGCACGACAGTTCGCGGAGGAGCTGCGCAAACCTGTTG
GTCGTTGGCCCCGAAGATAGCCCCCATGGCCAGAATATGACCGTCAGCGTGGTGCATC

ACGGTACGCGCGCGCTCGAGCAGAACTCATCTCAGAAGAGGATCTGGCAGCAAATGATATCCTGGATT
ACAAGGATGACGACGATAAGGTTAA



[View online »](#)

Protein Sequence: >RC210917 protein sequence
Red=Cloning site Green=Tags(s)

MASSTTRGPRVSDLFSGLPVAVTTPANQSAEASAGNGSVAGADAPVTPFQSLQLVHQLKGLIVLLYSVV
 VVVGLVGNCLLVLIARVRRLHNVTNFLIGNLALSDVLMCTACVPLTLAYAFEPGRWVFGGGLCHLVFFL
 QPVTVYVSFVTLTTIAVDRYVVLVHPLRRRISLRLSAYAVLAIWALSAVLALPAAVHTYHVELKPHDVRL
 CEEFWGSQERQQLYAWGLLLVYLLPLLIVLLSYVRSVKLRNRVVPVCVTQSQADWDRARRRRFCLL
 VVVVVVFVAVCWLPPLHVFNLLRDLDPHAIDPYAFGLVQLLCHWLAMSSACYNPFIYAWLHDSFREELRKL
 VAWPRKIAPHGQNMVSVVI

TRTRPLEQKLISEEDLAANDILDYKDDDDKV

Chromatograms: https://cdn.origene.com/chromatograms/mk6591_b05.zip

Restriction Sites: SgfI-MluI

Cloning Scheme:



* The last codon before the Stop codon of the ORF

ACCN: NM_004248

ORF Size: 1110 bp

OTI Disclaimer: The molecular sequence of this clone aligns with the gene accession number as a point of reference only. However, individual transcript sequences of the same gene can differ through naturally occurring variations (e.g. polymorphisms), each with its own valid existence. This clone is substantially in agreement with the reference, but a complete review of all prevailing variants is recommended prior to use. [More info](#)

OTI Annotation: This clone was engineered to express the complete ORF with an expression tag. Expression varies depending on the nature of the gene.

Components: The ORF clone is ion-exchange column purified and shipped in a 2D barcoded Matrix tube containing 10ug of transfection-ready, dried plasmid DNA (reconstitute with 100 ul of water).

Reconstitution Method:

1. Centrifuge at 5,000xg for 5min.
2. Carefully open the tube and add 100ul of sterile water to dissolve the DNA.
3. Close the tube and incubate for 10 minutes at room temperature.
4. Briefly vortex the tube and then do a quick spin (less than 5000xg) to concentrate the liquid at the bottom.
5. Store the suspended plasmid at -20°C. The DNA is stable for at least one year from date of shipping when stored at -20°C.

RefSeq: [NM_004248.2](#)

RefSeq Size: 1980 bp

RefSeq ORF: 1113 bp

Locus ID: 2834

UniProt ID: [P49683](#)

Cytogenetics: 10q26.11

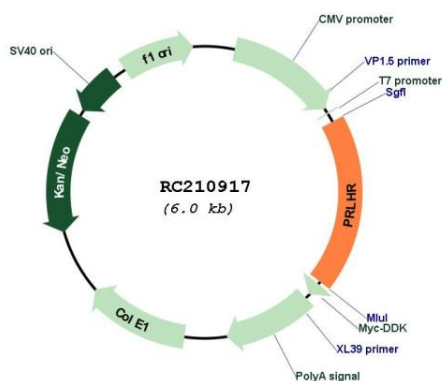
Protein Families: Druggable Genome, GPCR, Transmembrane

Protein Pathways: Neuroactive ligand-receptor interaction

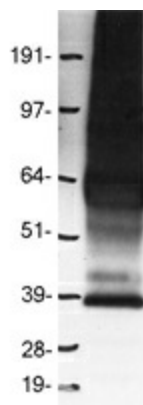
MW: 41.1 kDa

Gene Summary: PRLHR is a 7-transmembrane domain receptor for prolactin-releasing hormone (PRLH; MIM 602663) that is highly expressed in anterior pituitary (Ozawa et al., 2002 [PubMed 11923475]). [supplied by OMIM, Mar 2008]

Product images:



Circular map for RC210917



Western blot validation of overexpression lysate (Cat# [LY418118]) using anti-DDK antibody (Cat# [TA50011-100]). Left: Cell lysates from untransfected HEK293T cells; Right: Cell lysates from HEK293T cells transfected with RC210917 using transfection reagent MegaTran 2.0 (Cat# [TT210002]).