

Product datasheet for RC210908

ASPRV1 (NM_152792) Human Tagged ORF Clone

Product data:

Product Type:	Expression Plasmids
Product Name:	ASPRV1 (NM_152792) Human Tagged ORF Clone
Tag:	Myc-DDK
Symbol:	ASPRV1
Synonyms:	ADLI; MUNO; SASP; SASPase; Taps
Mammalian Cell Selection:	Neomycin
Vector:	pCMV6-Entry (PS100001)
E. coli Selection:	Kanamycin (25 ug/mL)
ORF Nucleotide Sequence:	>RC210908 ORF sequence Red=Cloning site Blue=ORF Green=Tags(s)

TTTTGTAATACGACTCACTATAGGGCGGCCGGAATTCGTCGACTGGATCCGGTACCGAGGAGATCTGCC
GCC**CGGATCGCC**

ATGGGGAGCCCAGGGGCCAGCCTAGGCATCAAAAAGGCTCTGCAGAGTGAACAGGCCACAGCACTGCCTG
CCTCTGCCCCAGCAGTCAGCCAGCCGACCGCGCCTGCTCCCTCTGCTTGCCCAAGGCCGGCAAGTCAT
CCCCGCTCTGCTCGAGAGGCCCGTTTTCCAGCGTGATTGCGCCGACACTGCTCTGTGGGTTTCTCTTC
TTGGCGTGGGTTGCTGCTGAGGTTCCAGAGGAGAGCAGCAGGATGGCCGGGAGCGGAGCCAGGAGTGAGG
AAGGCCCGCGCAGCATGCCTTCGTCGCCGAACCTTTTGATGGGGCCAATGTCGTCCCAAACCTCTGGCT
GCACAGCTTTGAAGTCATCAATGACCTCAACCATTGGGACCATATCACCAGCTAAGGTTCTGAAAGAG
TCCTCAGAGGAGAGGCCCTGGGTGTCTACAATAGGCTCAGTCCCAGGACCAGGAGACTATGGGACTG
TGAAAGAGGCCCTCTGAAGGCCTTTGGGGTCCCTGGGGTGCCTCCAGCCACCTGCCCAAAGAGATCGT
CTTTGCCAACAGCATGGGTAAGGGCTACTATCTCAAGGGGAAGATTGGCAAAGTGCCCGTGAGGTTCTG
GTGGACTCTGGGGCCAGGTCTCTGTGGTCCACCCAACTTGTTGGGAGGAGGTCCTGATGGCGATCTGG
ACACCTGCAGCCCTTTGAGAAATGTGGTAAAGGTGGCCAAATGGTCTGAAATGAAGATCCTGGGTGTCTG
GGATACAGCGGTGCCCTAGGCAAGCTGAAGCTGAAGGCACAGTTCCTAGTGCCCAATGCGAGTGCCGAG
GAAGCCATCATTGGCACTGATGTGCTCCAGGACCAATGCTATCCTGGACTTTGAGCACCGCACATGCA
CCCTGAAAGGGAAGAAGTTTCGCCTTCGCTGTGGGAGGGTCCCTGGAAGATGAGTTTGACCTGGAGCT
CATAGAGGAGGACCCCTCCTCAGAAGAAGGGCGGCAGGAGCTATCCAC

ACGCGTACGCGGCCGCTCGAGCAGAACTCATCTCAGAAGAGGATCTGGCAGCAATGATATCCTGGATT
ACAAGGATGACGACGATAAGGTTTAA



[View online »](#)

Protein Sequence: >RC210908 protein sequence
Red=Cloning site Green=Tags(s)

MGSPGASLGIIKALQSEQATALPASAPAVSQPTAPAPSCLPKAGQVIPALLREAPFSSVIAPTLLCGFLF
 LAWVAAEVPEESSRMAGSGARSEEGRRQHAFVPEPFDGANVVPNLWLHSFEVINDLNHWDHITKLRFLKE
 SLRGEALGVYNRSLSPQDQGDYGTVKEALLKAFGVPGAAPSHLPKEIVFANSMGKGYLLKGIKVPVRF
 VDSGAQVSVVHPNLWEEVTDGDLDTLQPFENVVKVANGAEMKILGVWDTAVSLGKLLKAQFLVANASAE
 EAIIGTDVYLQDHNAILD FEHRTCTLKGGKFRLLPVGGSLEDEFDLELEIEDPSSEEGRQELSH

TRTRPLEQKLISEEDLAANDILDYKDDDDKV

Chromatograms: https://cdn.origene.com/chromatograms/mk6592_b06.zip

Restriction Sites: SgfI-MluI

Cloning Scheme:

Cloning sites used for ORF Shuttling:



* The last codon before the Stop codon of the ORF

ACCN: NM_152792

ORF Size: 1029 bp

OTI Disclaimer: The molecular sequence of this clone aligns with the gene accession number as a point of reference only. However, individual transcript sequences of the same gene can differ through naturally occurring variations (e.g. polymorphisms), each with its own valid existence. This clone is substantially in agreement with the reference, but a complete review of all prevailing variants is recommended prior to use. [More info](#)

OTI Annotation: This clone was engineered to express the complete ORF with an expression tag. Expression varies depending on the nature of the gene.

Components: The ORF clone is ion-exchange column purified and shipped in a 2D barcoded Matrix tube containing 10ug of transfection-ready, dried plasmid DNA (reconstitute with 100 ul of water).

Reconstitution Method:

1. Centrifuge at 5,000xg for 5min.
2. Carefully open the tube and add 100ul of sterile water to dissolve the DNA.
3. Close the tube and incubate for 10 minutes at room temperature.
4. Briefly vortex the tube and then do a quick spin (less than 5000xg) to concentrate the liquid at the bottom.
5. Store the suspended plasmid at -20°C. The DNA is stable for at least one year from date of shipping when stored at -20°C.

RefSeq: [NM_152792.1](#), [NP_690005.1](#)

RefSeq Size: 2216 bp

RefSeq ORF: 780 bp

Locus ID: 151516

UniProt ID: [Q53RT3](#)

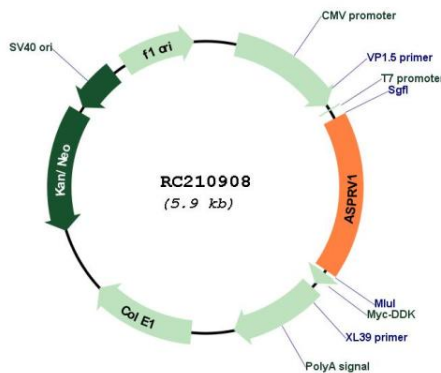
Cytogenetics: 2p13.3

Protein Families: Druggable Genome, Protease

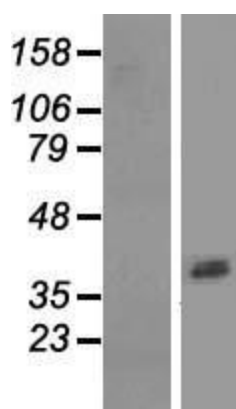
MW: 37 kDa

Gene Summary: Filaggrin is a structural protein that is crucial for in the development and maintenance of the skin barrier. This gene encodes a retroviral-like protease involved in profilaggrin-to-filaggrin processing. Expression is found primarily in the epidermis and inner root sheath of hair follicles. [provided by RefSeq, May 2017]

Product images:



Circular map for RC210908



Western blot validation of overexpression lysate (Cat# [LY407282]) using anti-DDK antibody (Cat# [TA50011-100]). Left: Cell lysates from untransfected HEK293T cells; Right: Cell lysates from HEK293T cells transfected with RC210908 using transfection reagent MegaTran 2.0 (Cat# [TT210002]).