

Product datasheet for RC210905L1

PLA2G12B (NM_032562) Human Tagged Lenti ORF Clone

Product data:

Product Type:	Expression Plasmids
Product Name:	PLA2G12B (NM_032562) Human Tagged Lenti ORF Clone
Tag:	Myc-DDK
Symbol:	PLA2G12B
Synonyms:	FKSG71; GXIIB; GXIIBsPLA2; PLA2G13; sPLA2-GXIIB
Mammalian Cell Selection:	None
Vector:	pLenti-C-Myc-DDK (PS100064)
E. coli Selection:	Chloramphenicol (34 ug/mL)
ORF Nucleotide Sequence:	The ORF insert of this clone is exactly the same as(RC210905).
Restriction Sites:	SgfI-MluI
Cloning Scheme:	

Cloning sites used for ORF Shuttling:



* The last codon before the Stop codon of the ORF.

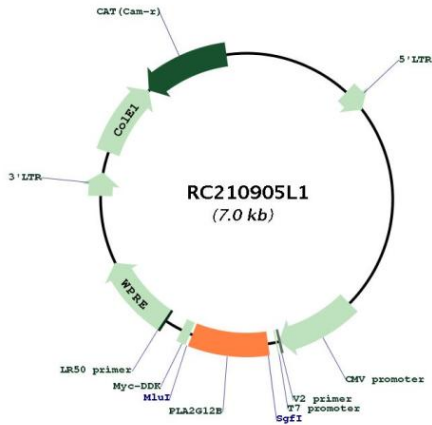
ACCN:	NM_032562
ORF Size:	585 bp



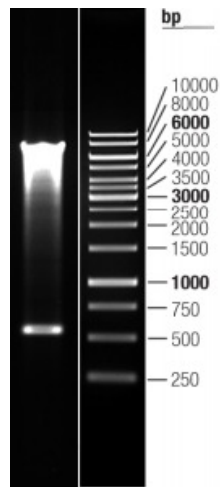
[View online >](#)

OTI Disclaimer:	The molecular sequence of this clone aligns with the gene accession number as a point of reference only. However, individual transcript sequences of the same gene can differ through naturally occurring variations (e.g. polymorphisms), each with its own valid existence. This clone is substantially in agreement with the reference, but a complete review of all prevailing variants is recommended prior to use. More info
OTI Annotation:	This clone was engineered to express the complete ORF with an expression tag. Expression varies depending on the nature of the gene.
Components:	The ORF clone is ion-exchange column purified and shipped in a 2D barcoded Matrix tube containing 10ug of transfection-ready, dried plasmid DNA (reconstitute with 100 ul of water).
Reconstitution Method:	<ol style="list-style-type: none">1. Centrifuge at 5,000xg for 5min.2. Carefully open the tube and add 100ul of sterile water to dissolve the DNA.3. Close the tube and incubate for 10 minutes at room temperature.4. Briefly vortex the tube and then do a quick spin (less than 5000xg) to concentrate the liquid at the bottom.5. Store the suspended plasmid at -20°C. The DNA is stable for at least one year from date of shipping when stored at -20°C.
RefSeq:	NM_032562.2
RefSeq Size:	1092 bp
RefSeq ORF:	588 bp
Locus ID:	84647
UniProt ID:	Q9BX93
Cytogenetics:	10q22.1
Protein Families:	Secreted Protein
Protein Pathways:	alpha-Linolenic acid metabolism, Arachidonic acid metabolism, Ether lipid metabolism, Fc epsilon RI signaling pathway, Glycerophospholipid metabolism, GnRH signaling pathway, Linoleic acid metabolism, Long-term depression, MAPK signaling pathway, Metabolic pathways, Vascular smooth muscle contraction, VEGF signaling pathway
MW:	21.7 kDa
Gene Summary:	The protein encoded by this gene belongs to the phospholipase A2 (PLA2) group of enzymes, which function in glycolipid hydrolysis with the release of free fatty acids and lysophospholipids. This family member has altered phospholipid-binding properties and is catalytically inactive. The protein is secreted, and together with microsomal triglyceride transfer protein, it functions to regulate HNF4alpha-induced hepatitis C virus infectivity. The expression of this gene is down-regulated in various tumors, suggesting that it may function as a negative regulator of tumor progression. Alternative splicing of this gene results in multiple transcript variants. [provided by RefSeq, Dec 2015]

Product images:



Circular map for RC210905L1



Double digestion of RC210905L1 using SgfI and MluI