

## Product datasheet for RC210902

### IFNA13 (IFNA1) (NM\_024013) Human Tagged ORF Clone

#### Product data:

**Product Type:** Expression Plasmids  
**Product Name:** IFNA13 (IFNA1) (NM\_024013) Human Tagged ORF Clone  
**Tag:** Myc-DDK  
**Symbol:** IFNA13  
**Synonyms:** IFL; IFN; IFN-ALPHA; IFN-alphaD; IFNA13; IFNA@; leIF D  
**Mammalian Cell Selection:** Neomycin  
**Vector:** pCMV6-Entry (PS100001)  
**E. coli Selection:** Kanamycin (25 ug/mL)  
**ORF Nucleotide Sequence:** >RC210902 ORF sequence  
 Red=Cloning site Blue=ORF Green=Tags(s)

TTTTGTAATACGACTCACTATAGGGCGCCGGGAATTCGTCGACTGGATCCGGTACCGAGGAGATCTGCC  
 GCC**CGATCGCC**

ATGGCCTCGCCCTTGGCTTTACTGATGGCCCTGGTGGTGCTCAGCTGCAAGTCAAGCTGCTCTCTGGGCT  
 GTGATCTCCCTGAGACCCACAGCCTGGATAACAGGAGGACCTTGATGCTCCTGGCACAAATGAGCAGAAT  
 CTCTCCTCTCTGTCTGATGGACAGACATGACTTTGGATTTCCCAGGAGGAGTTTGATGGCAACCAG  
 TTCCAGAAGGCTCCAGCCATCTGTCTCCATGAGCTGATCCAGCAGATCTCAACCTCTTACCACAA  
 AAGATTCATCTGTGCTTGGGATGAGGACCTCCTAGACAAATTCTGCACCGAACTCTACCAGCAGCTGAA  
 TGACTTGAAGCCTGTGTGATGCAGGAGGAGGGTGGGAGAACTCCCCTGATGAATGCGGACTCCATC  
 TTGGCTGTGAAGAAATACTTCCGAAGAATCACTCTCTATCTGACAGAGAAGAAATACAGCCCTTGTGCCT  
 GGGAGGTTGTGAGCAGAAATCATGAGATCCCTCTTTATCAACAACTTGAAGAAAGATTAAGGAG  
 GAAGGAA

**ACGCGT**ACGCGGCCGCTCGAGCAGAACTCATCTCAGAAGAGGATCTGGCAGCAATGATATCCTGGATT  
 ACAAGGATGACGACGATAAGGTTTAA

**Protein Sequence:** >RC210902 protein sequence  
 Red=Cloning site Green=Tags(s)

MASPFALLMALVVL SCKSSCSLGC DLPETHSLDNRR TMLLLAQMSRI SPSSCLMDR HDGFPQEEFDGNQ  
 FQKAPAI SVLHEL IQQIFNL FTTKDSSAAWDE DLLDKFCTEL YQQLNDLEACVMQE ERVGETPLMNADSI  
 LAVKKYFR RITLYL TEKKYSPCAWEV VRAEIMRSL SLSTNLQERLRKE

**TRTRPLEQKLI SEEDLAANDILDYKDDDDKV**

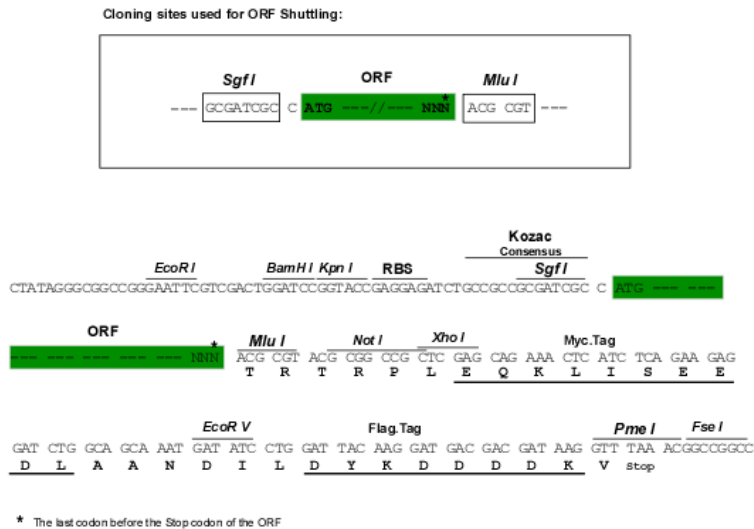


[View online »](#)

**Chromatograms:** [https://cdn.origene.com/chromatograms/mk6008\\_h05.zip](https://cdn.origene.com/chromatograms/mk6008_h05.zip)

**Restriction Sites:** SgfI-MluI

**Cloning Scheme:**



**ACCN:** NM\_024013

**ORF Size:** 567 bp

**OTI Disclaimer:** The molecular sequence of this clone aligns with the gene accession number as a point of reference only. However, individual transcript sequences of the same gene can differ through naturally occurring variations (e.g. polymorphisms), each with its own valid existence. This clone is substantially in agreement with the reference, but a complete review of all prevailing variants is recommended prior to use. [More info](#)

**OTI Annotation:** This clone was engineered to express the complete ORF with an expression tag. Expression varies depending on the nature of the gene.

**Components:** The ORF clone is ion-exchange column purified and shipped in a 2D barcoded Matrix tube containing 10ug of transfection-ready, dried plasmid DNA (reconstitute with 100 ul of water).

- Reconstitution Method:**
1. Centrifuge at 5,000xg for 5min.
  2. Carefully open the tube and add 100ul of sterile water to dissolve the DNA.
  3. Close the tube and incubate for 10 minutes at room temperature.
  4. Briefly vortex the tube and then do a quick spin (less than 5000xg) to concentrate the liquid at the bottom.
  5. Store the suspended plasmid at -20°C. The DNA is stable for at least one year from date of shipping when stored at -20°C.

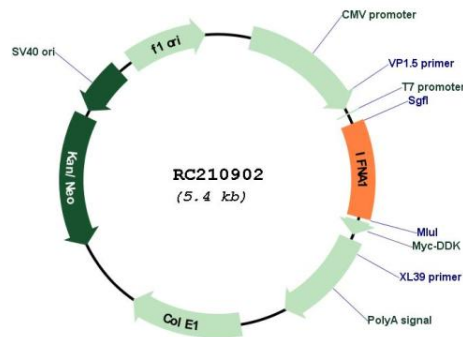
**Note:** Plasmids are not sterile. For experiments where strict sterility is required, filtration with 0.22um filter is required.

**RefSeq:** [NM\\_024013.3](#)

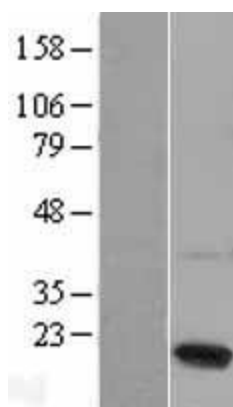
**RefSeq Size:** 863 bp

<b>RefSeq ORF:</b>	570 bp
<b>Locus ID:</b>	3439
<b>UniProt ID:</b>	<a href="#">P01562</a>
<b>Cytogenetics:</b>	9p21.3
<b>Protein Families:</b>	Druggable Genome
<b>Protein Pathways:</b>	Antigen processing and presentation, Autoimmune thyroid disease, Cytokine-cytokine receptor interaction, Cytosolic DNA-sensing pathway, Jak-STAT signaling pathway, Natural killer cell mediated cytotoxicity, Regulation of autophagy, RIG-I-like receptor signaling pathway, Toll-like receptor signaling pathway
<b>MW:</b>	21.7 kDa
<b>Gene Summary:</b>	This gene is a member of the alpha interferon gene cluster on chromosome 9. The encoded cytokine is a member of the type I interferon family that is produced in response to viral infection as a key part of the innate immune response with potent antiviral, antiproliferative and immunomodulatory properties. This cytokine, like other type I interferons, binds a plasma membrane receptor made of IFNAR1 and IFNAR2 that is ubiquitously expressed, and thus is able to act on virtually all body cells. This cytokine is upregulated in preeclamptic placentas and is thought to be a mediator of preeclampsia. [provided by RefSeq, Aug 2020]

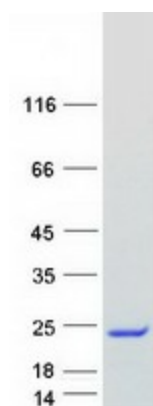
### Product images:



Circular map for RC210902



Western blot validation of overexpression lysate (Cat# [LY402974]) using anti-DDK antibody (Cat# [TA50011-100]). Left: Cell lysates from untransfected HEK293T cells; Right: Cell lysates from HEK293T cells transfected with RC210902 using transfection reagent MegaTran 2.0 (Cat# [TT210002]).



Coomassie blue staining of purified IFNA1 protein (Cat# [TP310902]). The protein was produced from HEK293T cells transfected with IFNA1 cDNA clone (Cat# RC210902) using MegaTran 2.0 (Cat# [TT210002]).